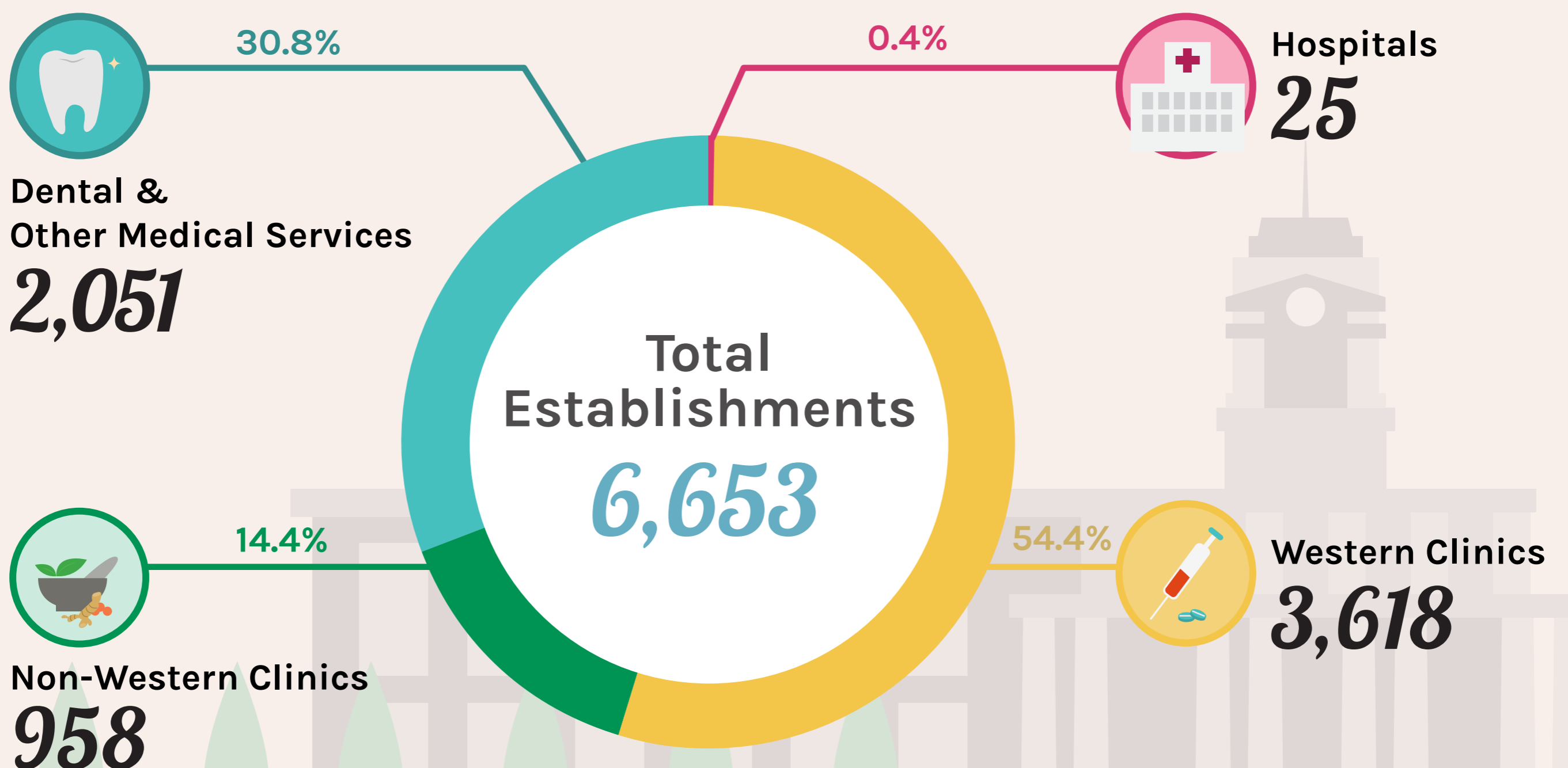


# SINGAPORE HEALTH SERVICES INDUSTRY 2021



"Hospitals" was the smallest segment in terms of number of establishments but contributed the most to health industry's operating revenue and value added.



# Operating Revenue

Total  
**S\$21,493 Mil**



53.4%

24.2%

0.9%

21.5%



Hospitals

**S\$11,483 Mil**



Western Clinics

**S\$5,191 Mil**



Non-Western Clinics

**S\$204 Mil**



Dental &  
Other Medical  
Services

**S\$4,616 Mil**

# Value Added

Total  
**S\$11,437 Mil**



49.3%

24.0%

0.8%

26.0%



Hospitals



**S\$5,640 Mil**



Western Clinics



**S\$2,741 Mil**



Non-Western Clinics



**S\$88 Mil**



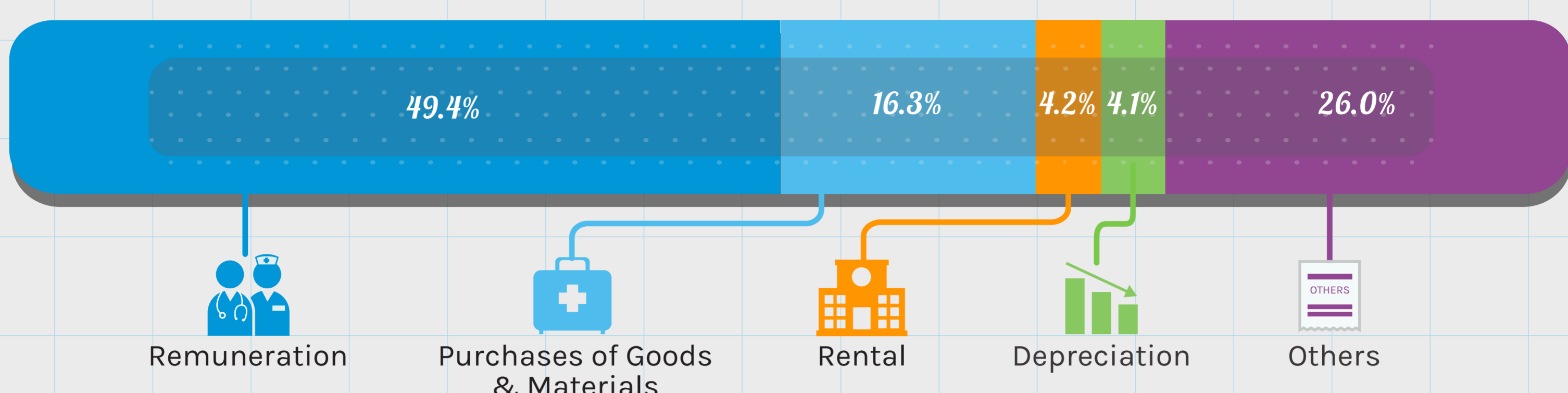
Dental &  
Other Medical  
Services



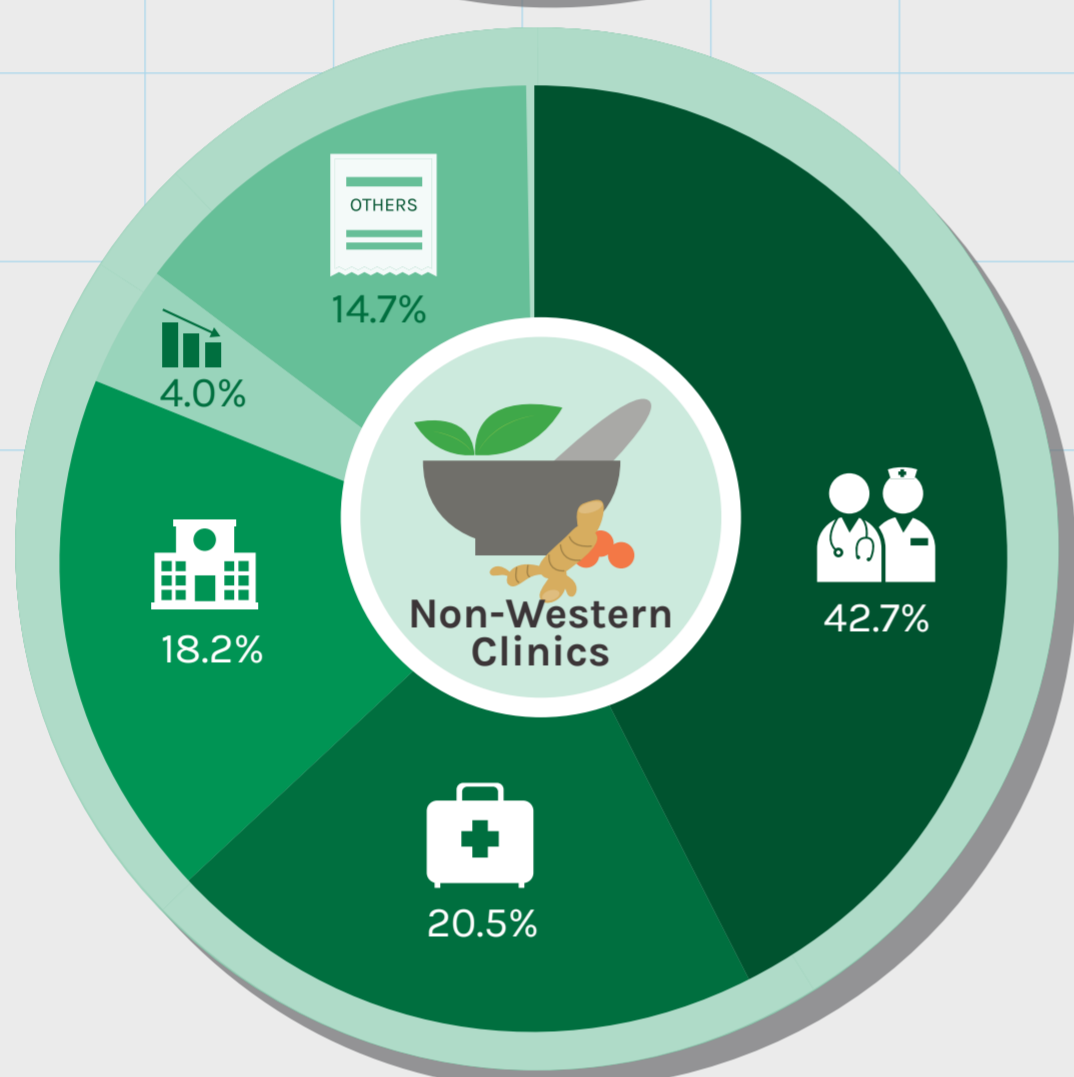
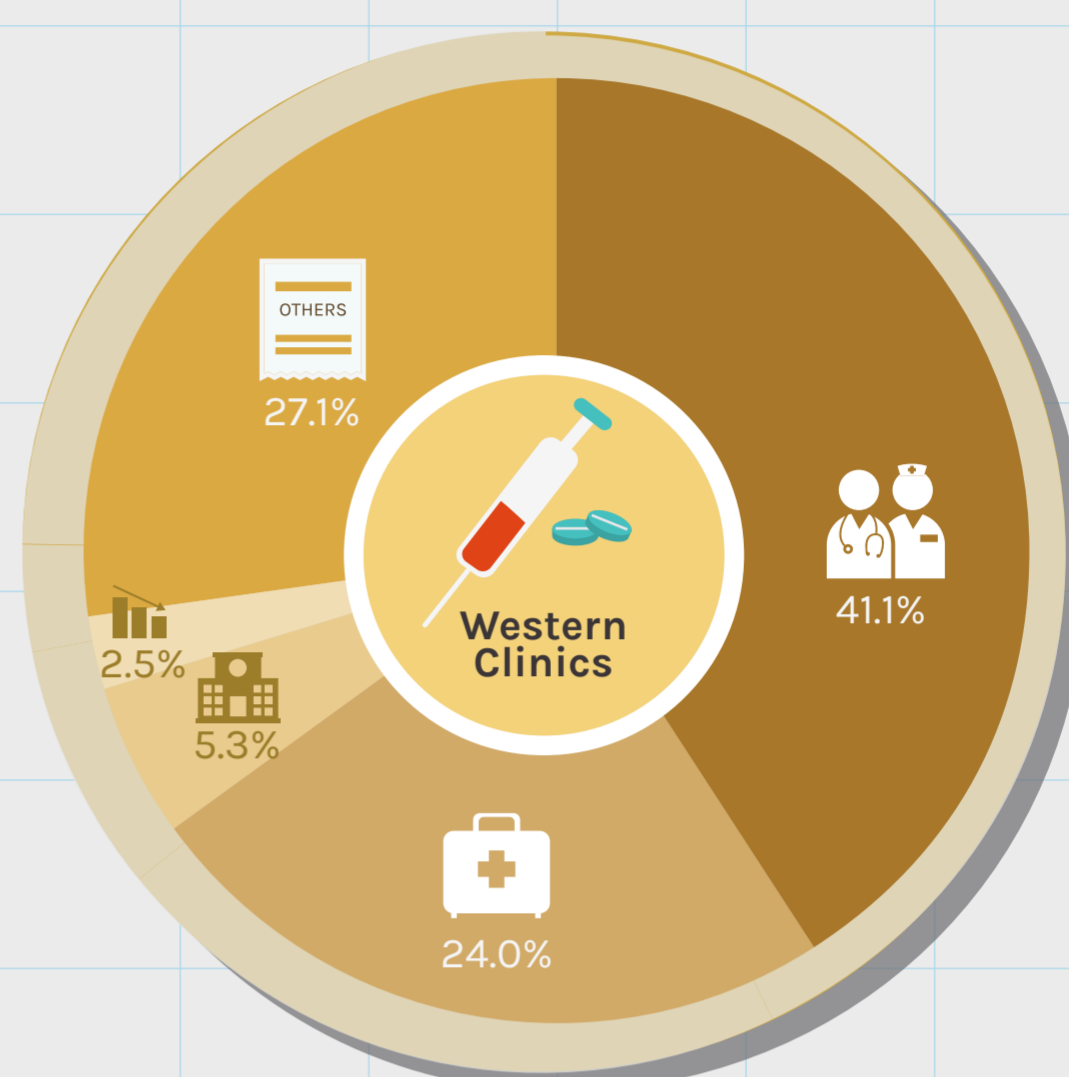
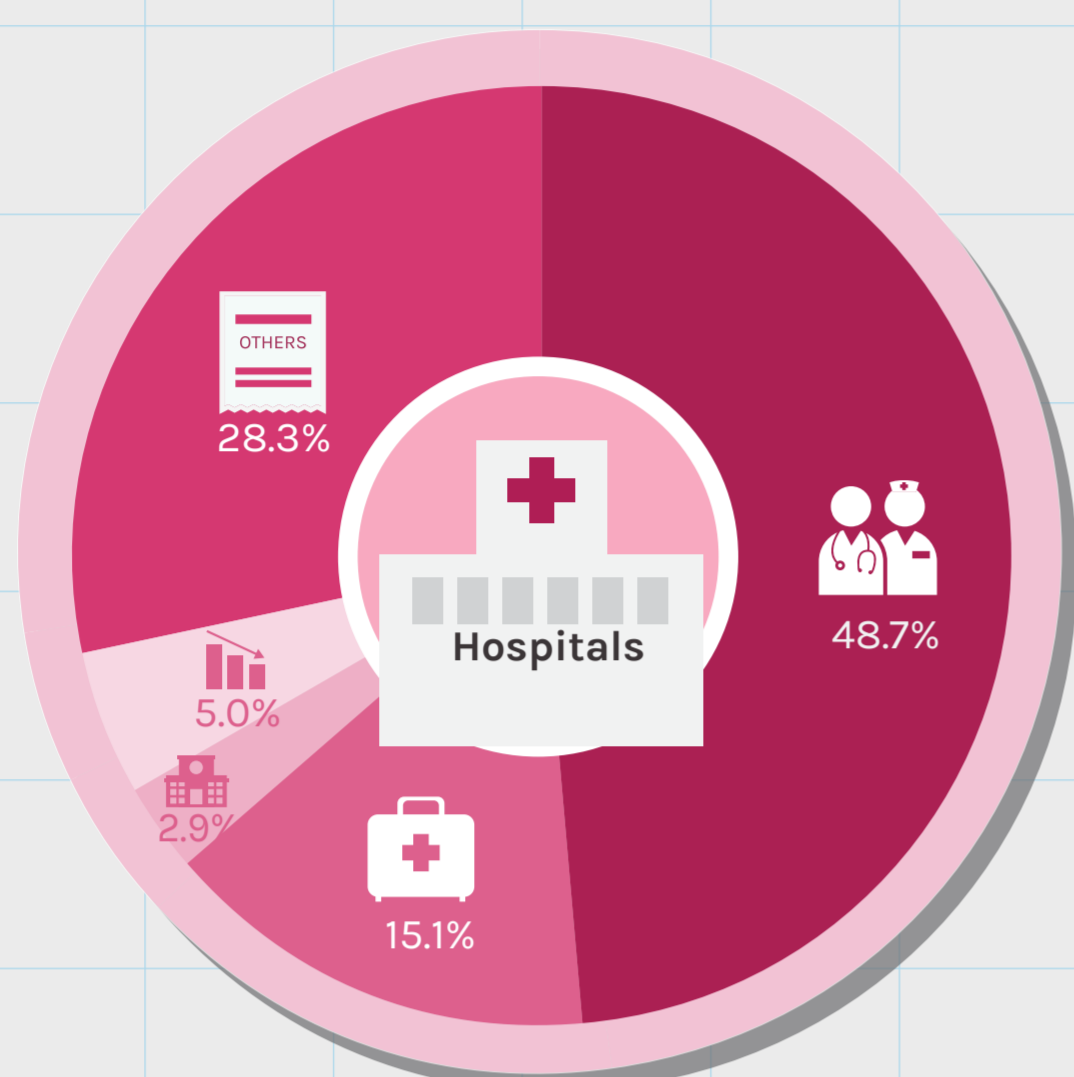
**S\$2,969 Mil**

# Business Costs

For all segments, remuneration continued to be the largest business cost item followed by purchases of goods & materials. Together, they contributed more than 60% to total operating expenditure in 2021.

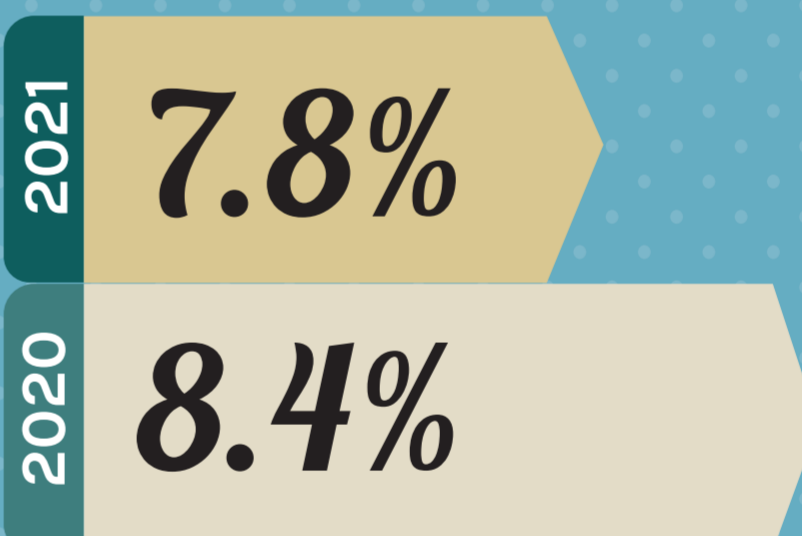


## Total Health Services

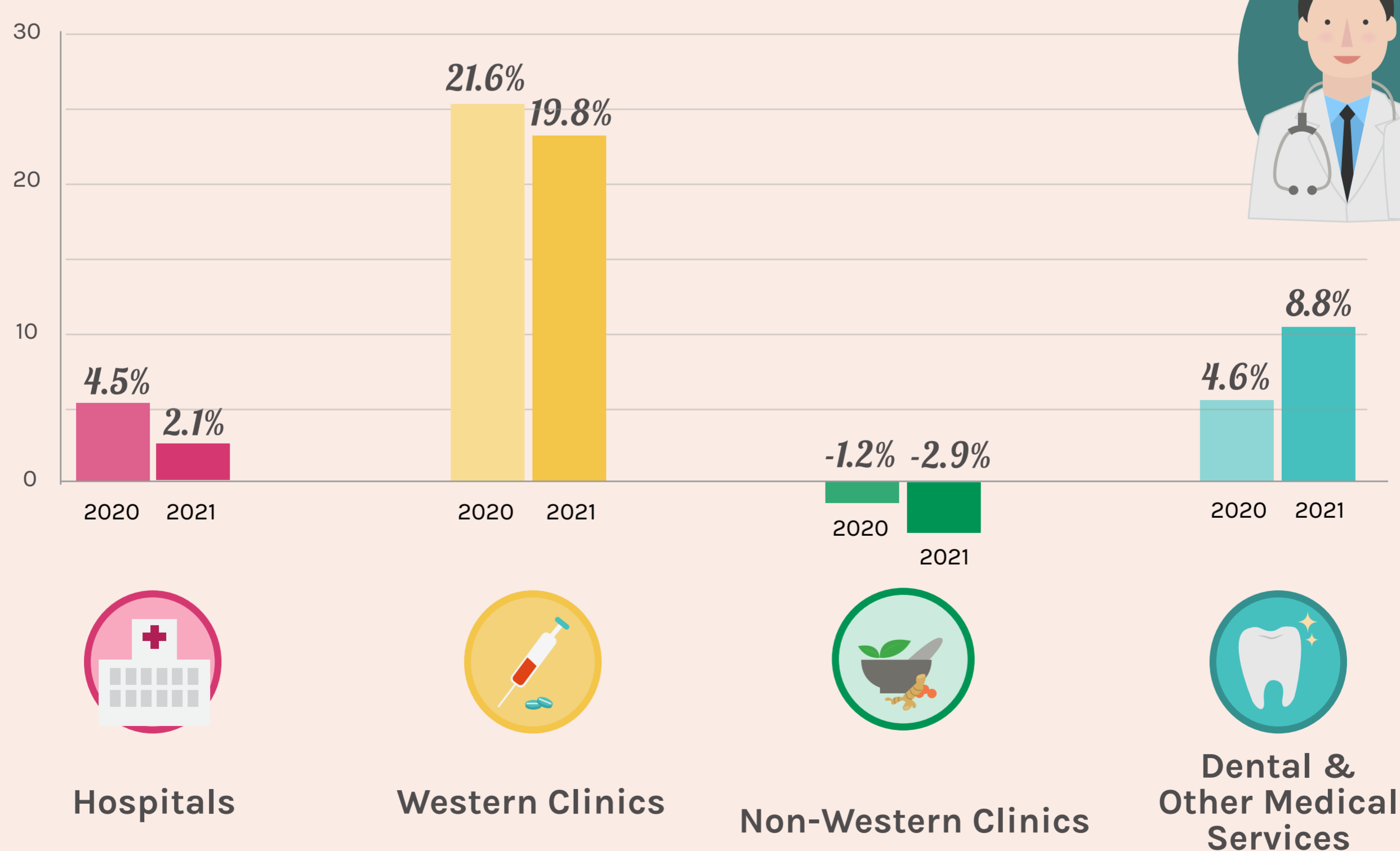


## Profitability Ratio<sup>1</sup>, 2020 and 2021

### Total Health Services



All segments recorded lower profitability ratio in 2021 compared to 2020 except "dental & other medical services".



<sup>1</sup> Defined as the ratio of operating surplus to operating revenue multiplied by 100.