

The background of the entire page is a light blue sky. At the top left, there is a yellow sun partially obscured by a white cloud. At the top right, there is a single white cloud. In the middle left, a small white airplane with red and blue accents is flying towards the right, leaving a grey trail. In the middle right, there is a single white cloud. At the bottom, there is a detailed illustration of a city skyline. It includes several tall blue and grey skyscrapers, some with construction cranes (blue and white) attached to them. There are also shorter buildings in red, orange, and white. In the foreground, there are green trees, a red brick bridge, and a bus. The overall style is a flat, colorful illustration.

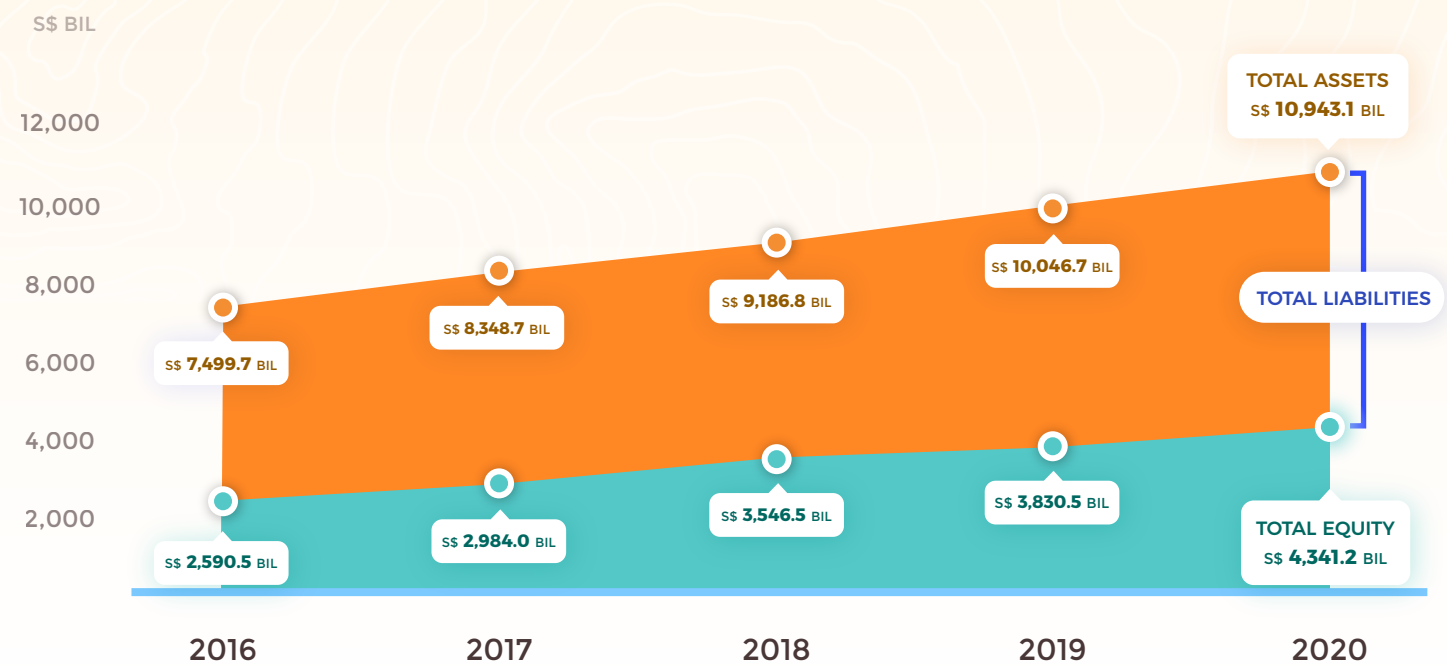
SINGAPORE'S CORPORATE SECTOR


A yellow rectangular sticky note with a red pushpin at the top center. The year '2020' is written in black text on the note.

2020


TOTAL ASSETS & EQUITY


2016 - 2020





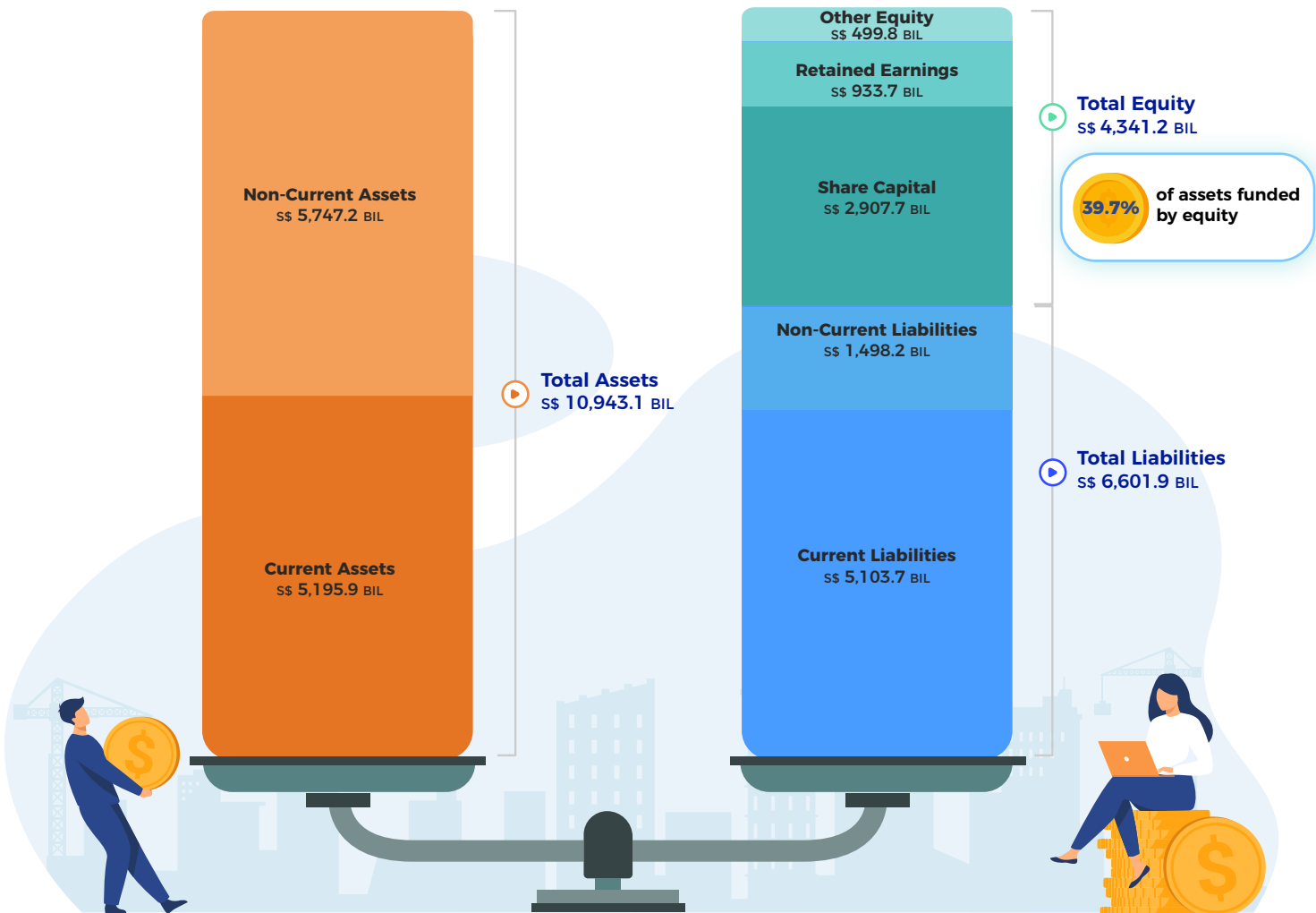
GROWTH RATE FROM 2019 TO 2020

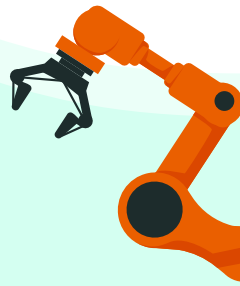
**TOTAL ASSETS**
8.9%

**TOTAL EQUITY**
13.3%

COMPOSITION OF BALANCE SHEET

2020





TOTAL ASSETS BY INDUSTRY

2020

TOP 5 INDUSTRIES

FINANCE &
INSURANCE



S\$ 7,843.7 BIL
71.7%

WHOLESALE &
RETAIL TRADE



S\$ 894.5 BIL
8.2%

MANUFACTURING



S\$ 618.4 BIL
5.7%

PROFESSIONAL AND
ADMINISTRATIVE &
SUPPORT SERVICES

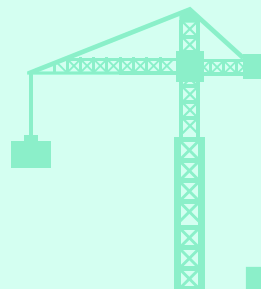
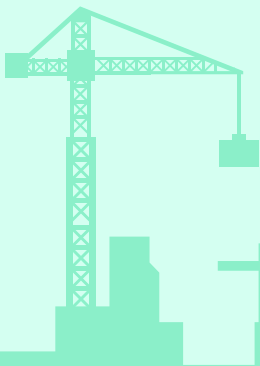


S\$ 461.2 BIL
4.2%

REAL ESTATE



S\$ 447.0 BIL
4.1%



TOTAL EQUITY BY INDUSTRY

2020

TOP 5 INDUSTRIES

FINANCE &
INSURANCE



S\$ 2,912.5 BIL
67.1%

MANUFACTURING



S\$ 353.3 BIL
8.1%

WHOLESALE &
RETAIL TRADE



S\$ 342.4 BIL
7.9%

PROFESSIONAL AND
ADMINISTRATIVE &
SUPPORT SERVICES



S\$ 278.8 BIL
6.4%

REAL ESTATE

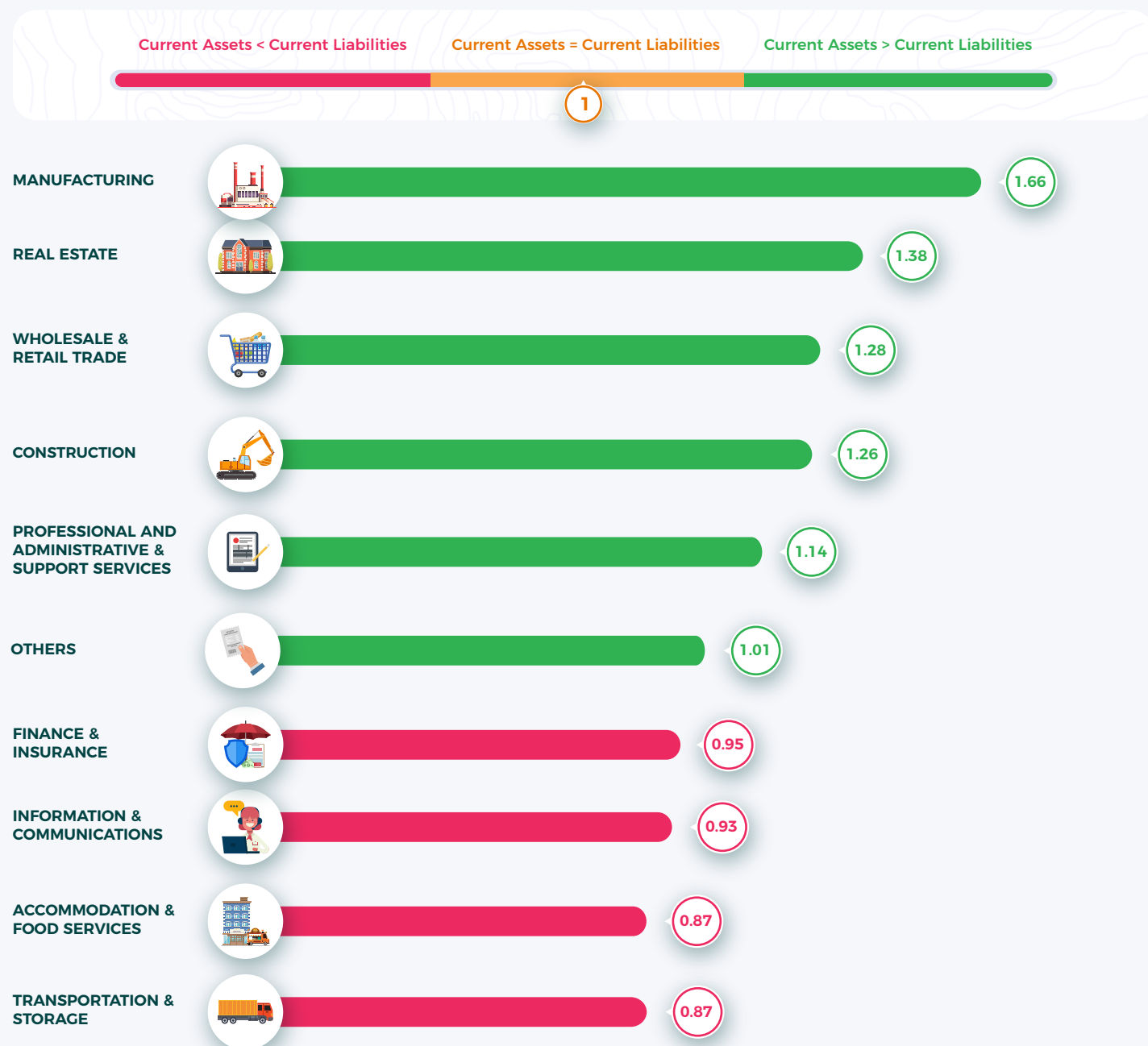


S\$ 211.5 BIL
4.9%



CURRENT RATIO¹ BY INDUSTRY

2020



RATIO BELOW 1

The risk of the company running into a liquidity problem is higher

RATIO EQUALS 1

The company has exactly balanced its current liabilities with current assets

RATIO ABOVE 1

This indicates liquidity in the company

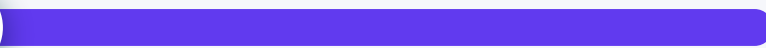
¹ Defined as the ratio of current assets to current liabilities and measures the companies' ability to meet their current liabilities when due.

EQUITY RATIO² BY INDUSTRY

2020



PROFESSIONAL AND
ADMINISTRATIVE &
SUPPORT SERVICES



0.60

MANUFACTURING



0.57

REAL ESTATE



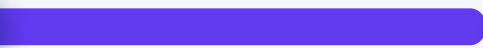
0.47

ACCOMMODATION &
FOOD SERVICES



0.38

OTHERS



0.38

WHOLESALE &
RETAIL TRADE



0.38

INFORMATION &
COMMUNICATIONS



0.37

CONSTRUCTION



0.37

FINANCE &
INSURANCE



0.37

TRANSPORTATION &
STORAGE



0.34



The higher the company's dependence on external funding to finance its assets, the lower the ratio.

² Defined as the ratio of total equity to total assets and measures the dependence of companies on external funding to finance their assets.

RETURN ON ASSETS BY INDUSTRY

2020



Return on assets is defined as
the ratio of profit before interest and tax to average
total assets.

RETURN ON EQUITY BY INDUSTRY

2020

MANUFACTURING



38.2%

WHOLESALE & RETAIL TRADE



13.9%

FINANCE & INSURANCE



10.1%

TRANSPORTATION & STORAGE



9.5%

INFORMATION & COMMUNICATIONS



5.6%

PROFESSIONAL AND ADMINISTRATIVE & SUPPORT SERVICES



5.5%

REAL ESTATE



2.1%

OTHERS



0.9%

ACCOMMODATION & FOOD SERVICES



-1.9%

CONSTRUCTION



-3.2%



Return on equity is defined as the **ratio of profit before tax to average total equity.**

RESOURCES



Latest Data on Corporate Sector

www.singstat.gov.sg/find-data/search-by-theme/industry/corporate-sector/latest-data



Other Resources on Corporate Sector

www.singstat.gov.sg/find-data/search-by-theme/industry/corporate-sector/visualising-data/singapore-corporate-sector-dashboard