

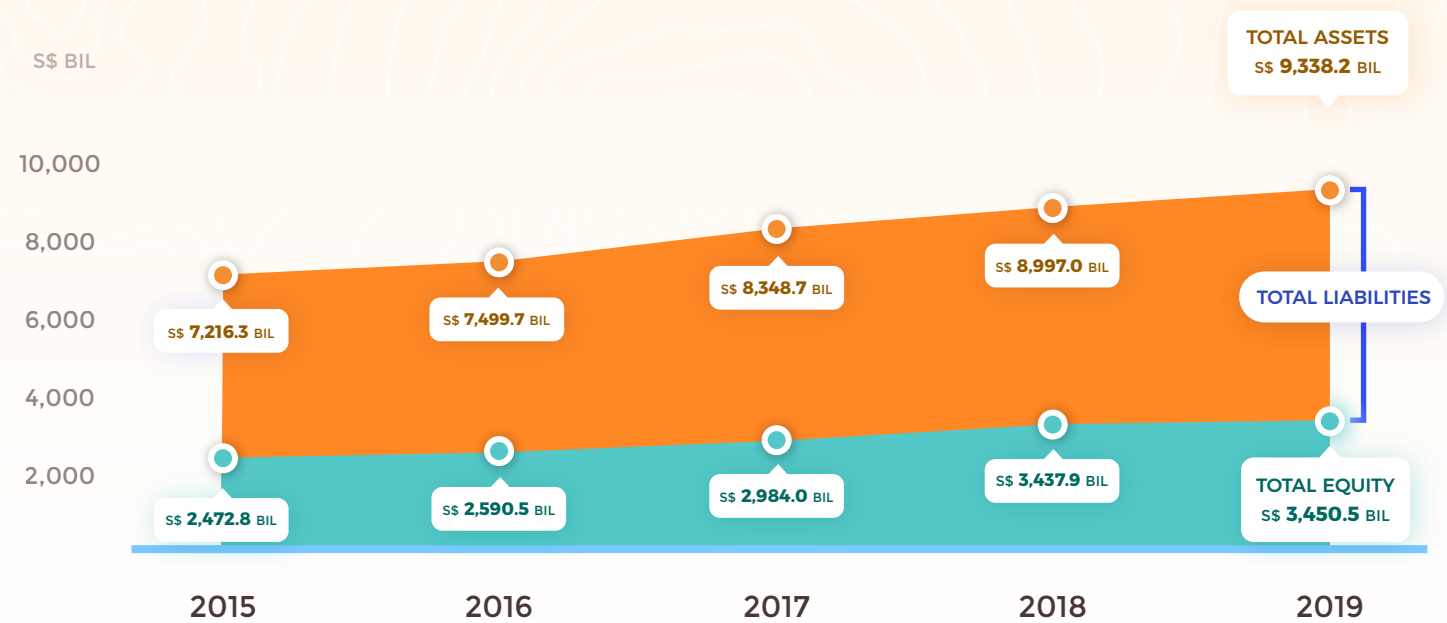
A stylized illustration of a city skyline at the bottom of the page. It features various buildings in shades of blue, red, and beige, some with windows. There are three blue construction cranes, two on the left and one on the right. A red and white airplane is flying in the sky on the left. The sky is light blue with a few white clouds and a yellow sun in the top left corner.


SINGAPORE'S CORPORATE SECTOR

2019


TOTAL ASSETS & EQUITY

2015 - 2019






GROWTH RATE FROM 2018 TO 2019



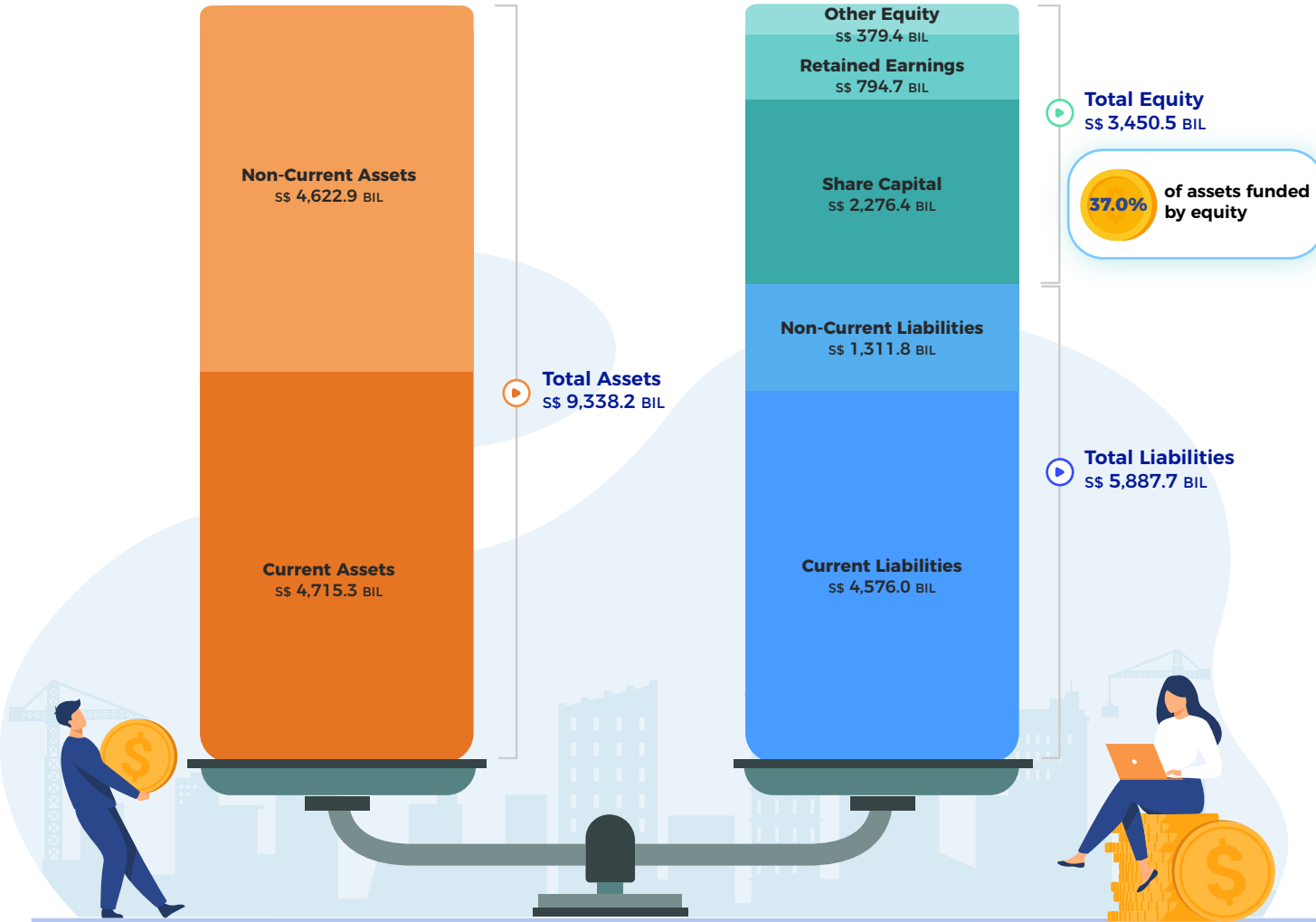
TOTAL ASSETS
3.8%



TOTAL EQUITY
0.4%

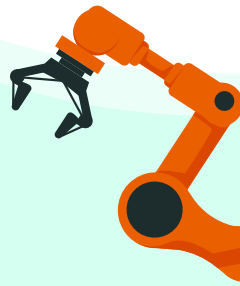
COMPOSITION OF BALANCE SHEET

2019



TOTAL ASSETS BY INDUSTRY

2019



TOP 5 INDUSTRIES

FINANCE &
INSURANCE



S\$ 6,525.7 BIL
69.9%

WHOLESALE &
RETAIL TRADE



S\$ 821.2 BIL
8.8%

MANUFACTURING



S\$ 554.7 BIL
5.9%

REAL ESTATE



S\$ 451.7 BIL
4.8%

PROFESSIONAL AND
ADMINISTRATIVE &
SUPPORT SERVICES



S\$ 387.0 BIL
4.1%



TOTAL EQUITY BY INDUSTRY

2019

TOP 5 INDUSTRIES

FINANCE &
INSURANCE



S\$ 2,178.8 BIL
63.1%

WHOLESALE &
RETAIL TRADE



S\$ 293.2 BIL
8.5%

MANUFACTURING



S\$ 280.6 BIL
8.1%

PROFESSIONAL AND
ADMINISTRATIVE &
SUPPORT SERVICES



S\$ 258.0 BIL
7.5%

REAL ESTATE

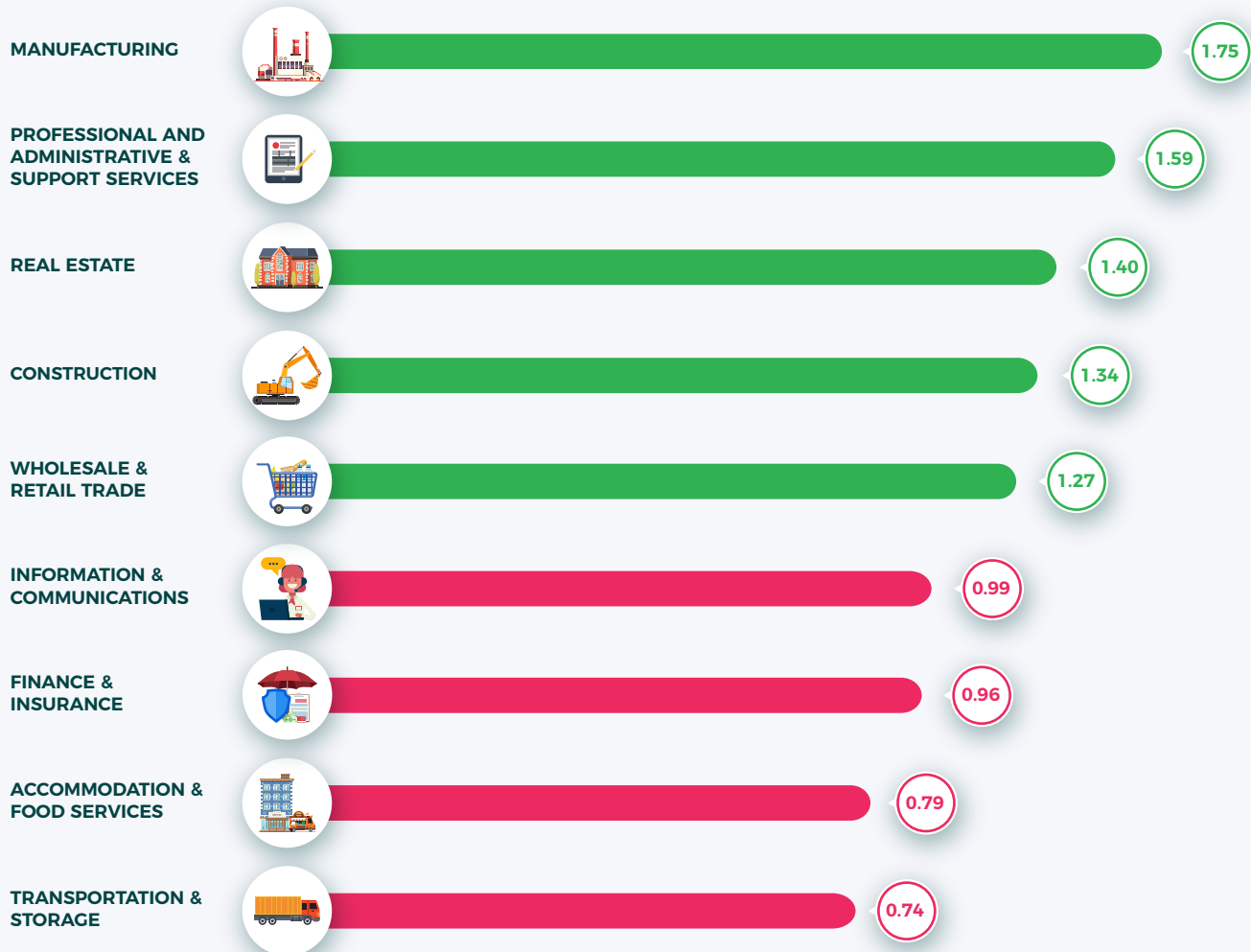
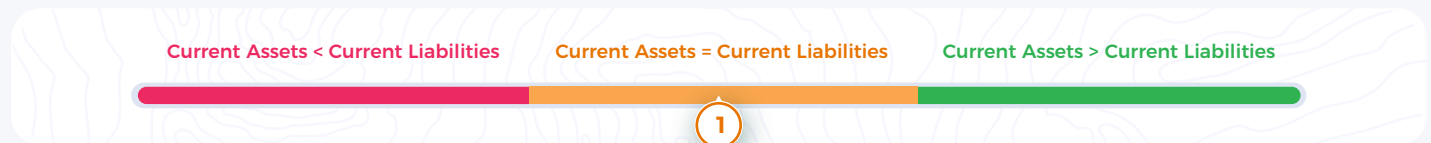


S\$ 213.2 BIL
6.2%



CURRENT RATIO¹ BY INDUSTRY

2019



RATIO BELOW 1

The risk of the company running into a liquidity problem is higher

RATIO EQUALS 1

The company has exactly balanced its current liabilities with current assets

RATIO ABOVE 1

This indicates liquidity in the company

¹ Defined as the ratio of current assets to current liabilities and measures the liquidity of companies

EQUITY RATIO² BY INDUSTRY

2019



PROFESSIONAL AND
ADMINISTRATIVE &
SUPPORT SERVICES



0.67

MANUFACTURING



0.51

REAL ESTATE



0.47

INFORMATION &
COMMUNICATIONS



0.44

ACCOMMODATION &
FOOD SERVICES



0.40

CONSTRUCTION



0.39

WHOLESALE &
RETAIL TRADE



0.36

TRANSPORTATION &
STORAGE



0.33

FINANCE &
INSURANCE



0.33

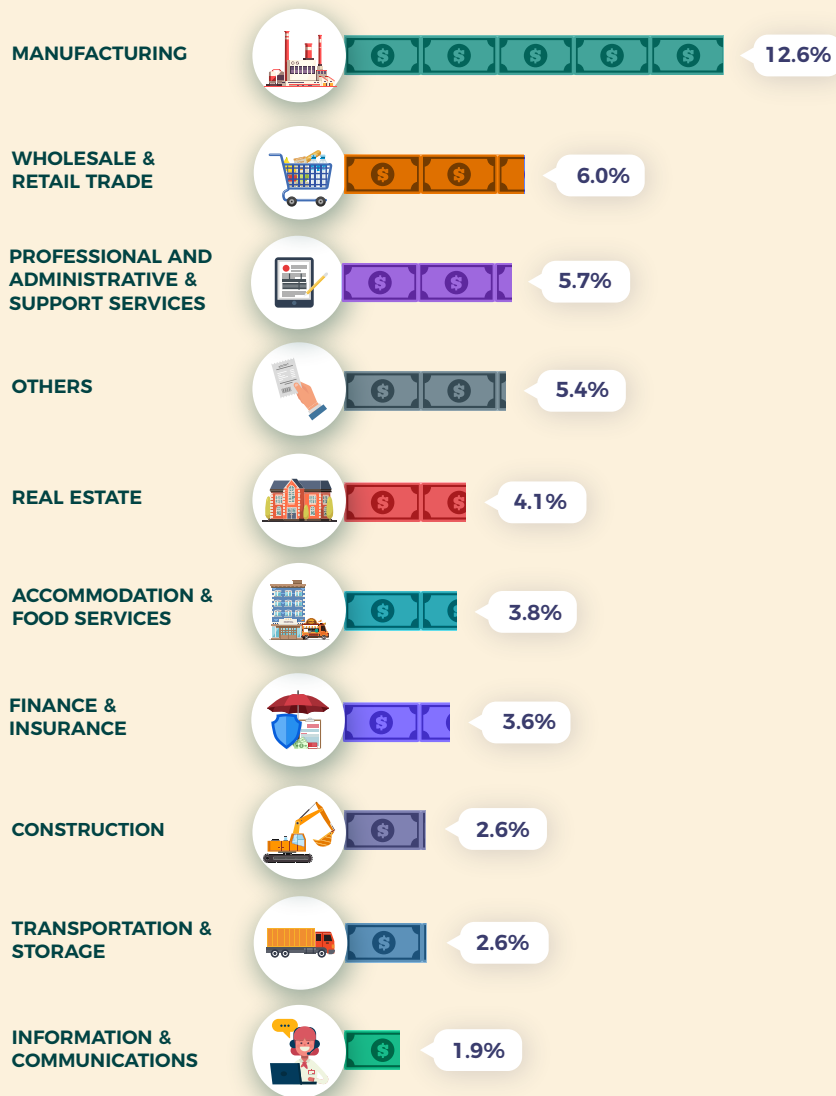


The higher the company's dependence on external funding, the lower the ratio.

² Defined as the ratio of total equity to total assets and measures the dependence of companies on external funding

RETURN ON ASSETS BY INDUSTRY

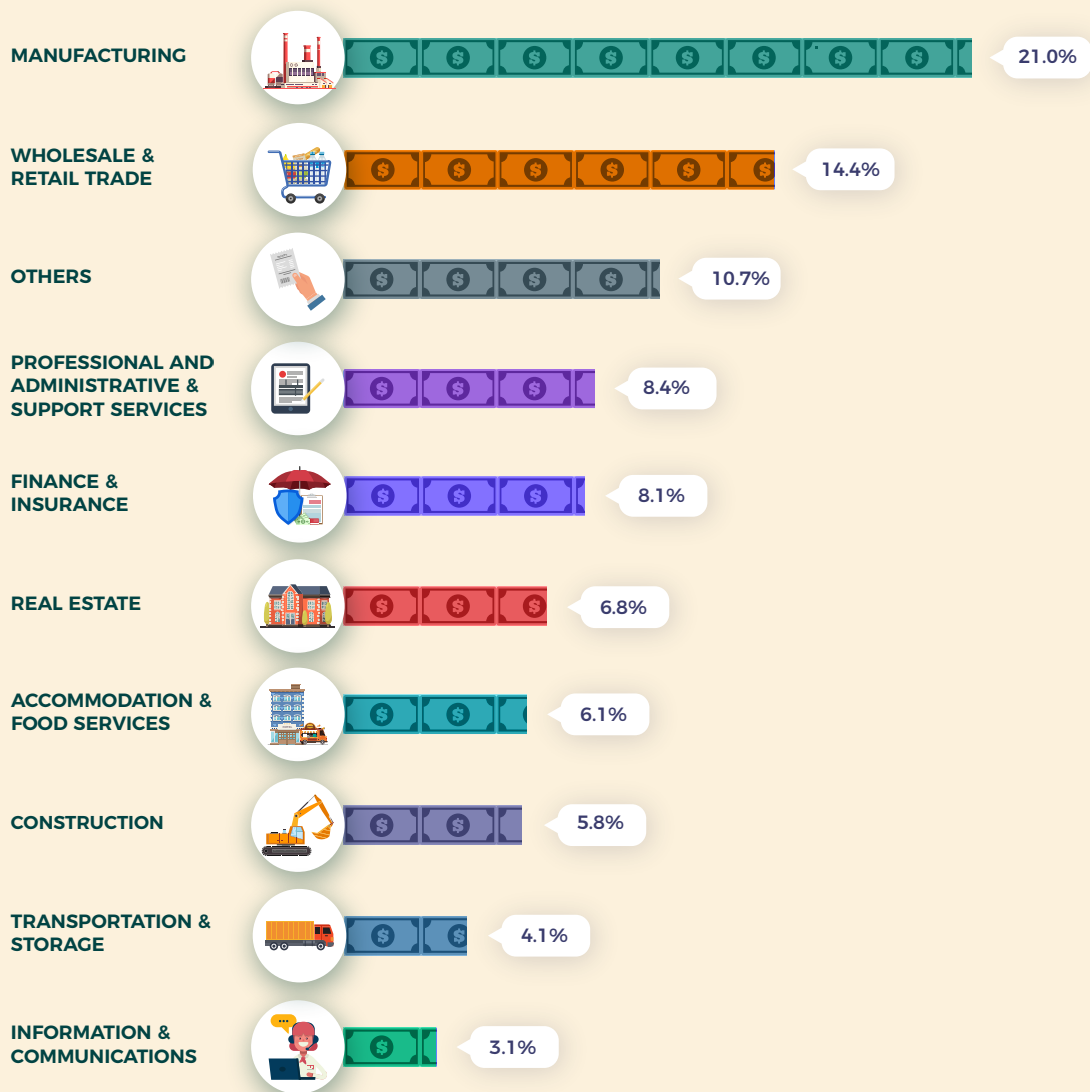
2019



Return on assets is defined as
the ratio of profit before interest and tax to
average total assets.

RETURN ON EQUITY BY INDUSTRY

2019



Return on equity is defined as the ratio of profit before tax to average total equity.

RESOURCES



Latest Data on Corporate Sector

www.singstat.gov.sg/find-data/search-by-theme/industry/corporate-sector/latest-data



Other Resources on Corporate Sector

www.singstat.gov.sg/publications/industry/corporate-sector