



Singapore Manufactured Products & Domestic Supply Price Indices March 2026

www.singstat.gov.sg

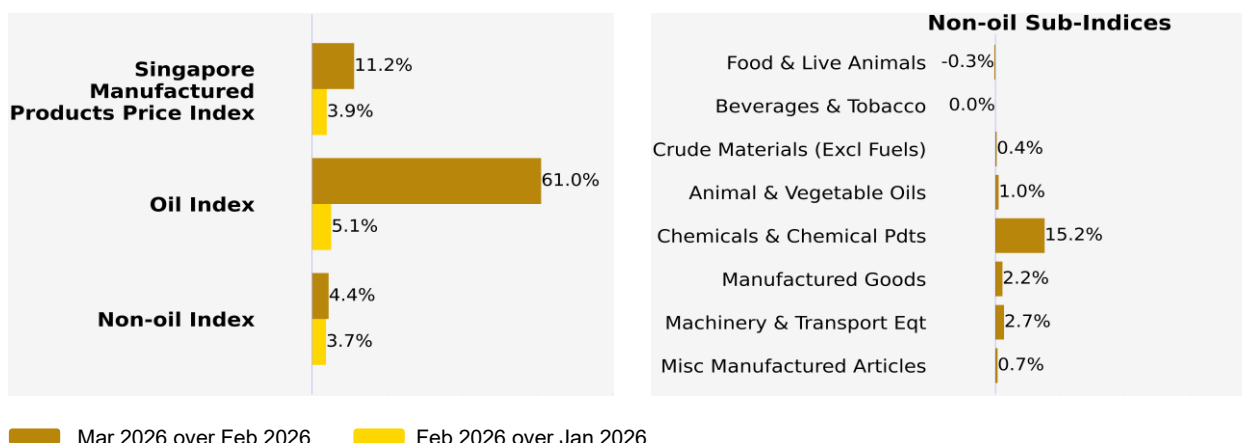
**SINGAPORE MANUFACTURED PRODUCTS &
DOMESTIC SUPPLY PRICE INDICES, March 2026
ISSN 2591-7447**

© Department of Statistics, Ministry of Trade & Industry, Republic of Singapore

Reproducing or quoting any part of this publication is permitted, provided this publication is accredited as the source. Please refer to the SingStat Website Terms of Use (<http://www.singstat.gov.sg/terms-of-use>) for more details on the conditions of use of this publication.

Singapore Manufactured Products Price Index (2023 = 100) March 2026

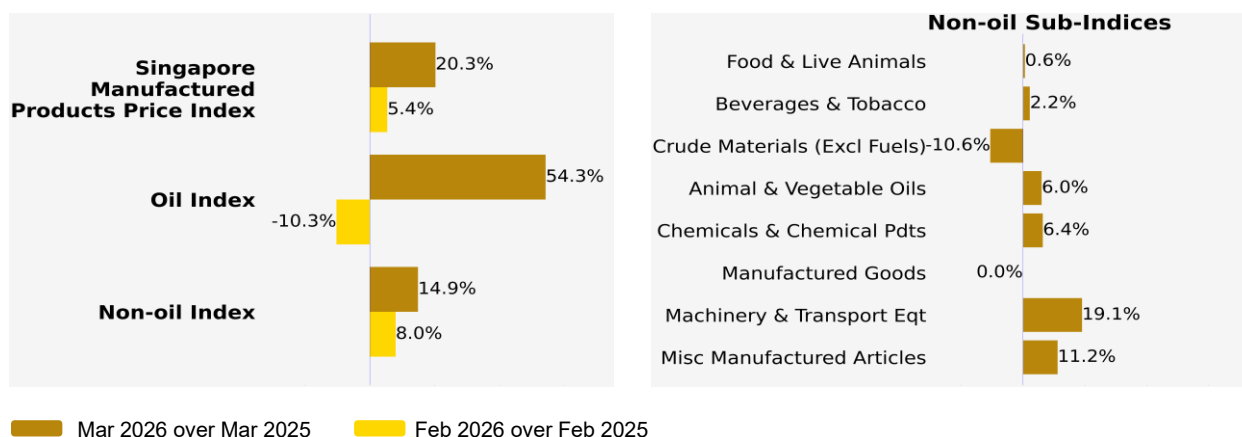
Month-on-Month Change



The Singapore Manufactured Products Price Index rose 11.2% in March 2026, following the 3.9% increase in February 2026. The Oil index gained 61.0%, extending the 5.1% increase in the previous month, mainly due to higher prices of petroleum and products arising from the Middle East conflict¹. The Non-oil index rose 4.4% in March 2026, continuing the 3.7% increase in February 2026.

The increase in the Non-oil index was mainly driven by the Chemicals & Chemical Products index, attributed to higher prices of organic chemicals amidst heightened tension in the Middle East², as well as the Machinery & Transport Equipment, Miscellaneous Manufactured Articles, Manufactured Goods, Crude Materials and Animal & Vegetable Oils indices. The gains were partially offset by the decline in the Food & Live Animals index.

Year-on-Year Change



The Singapore Manufactured Products Price Index rose 20.3% in March 2026 from a year ago, following the 5.4% increase in February 2026. The Oil and Non-oil indices jumped 54.3% and 14.9% respectively.

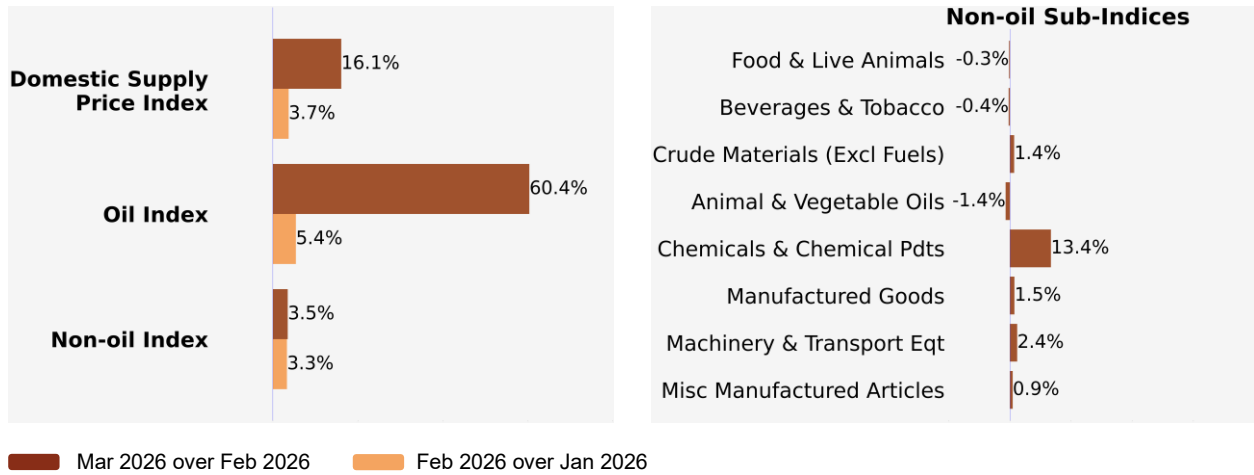
Among the Non-oil sub-indices, increases were mainly led by the Machinery & Transport Equipment index, stemming from higher prices of electrical machinery apparatus, as well as the Chemicals & Chemical Products, Miscellaneous Manufactured Articles, Food & Live Animals, Animal & Vegetable Oils and Beverages & Tobacco indices. The increases were partially moderated by the decrease in the Crude Materials index.

¹ Oil poised for further gains as Middle East conflict threatens export facilities. (2026, March 15). The Business Times. <https://www.businesstimes.com.sg/companies-markets/energy-commodities/oil-poised-further-gains-middle-east-conflict-threatens-export-facilities>

² In charts: Singapore's energy and chemicals sector in focus as Middle East conflict escalates. (2026, March 10). The Business Times. <https://www.businesstimes.com.sg/companies-markets/charts-singapores-energy-and-chemicals-sector-focus-middle-east-conflict-escalates?ref=article-see-also>

Domestic Supply Price Index (2023 = 100) March 2026

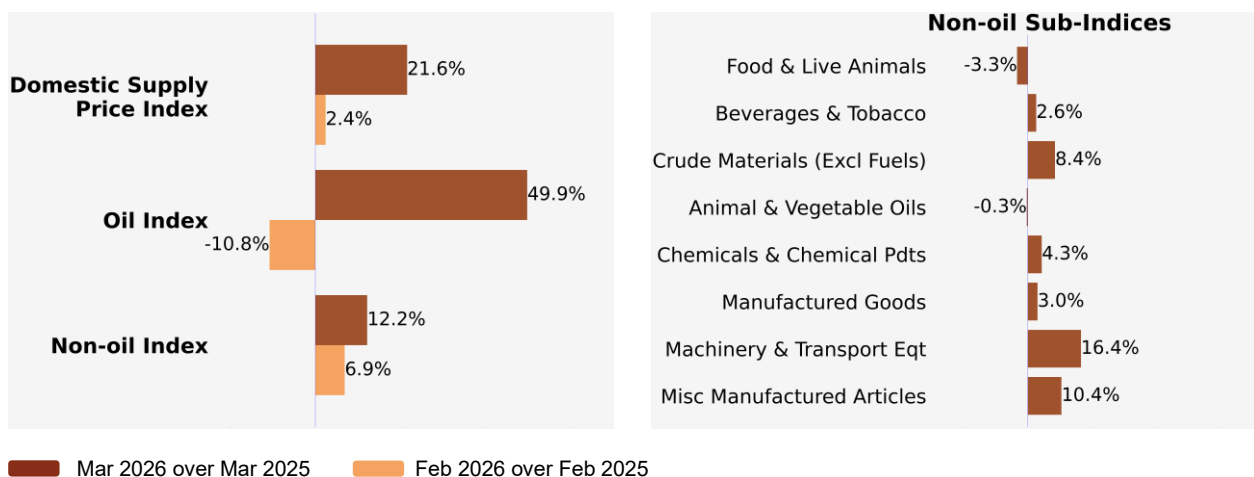
Month-on-Month Change



The Domestic Supply Price Index rose 16.1% in March 2026, following the 3.7% increase in February 2026. The Oil index gained 60.4%, extending the 5.4% increase in the previous months, mainly due to higher prices of petroleum and products. The Non-oil index rose 3.5% in March 2026, after the 3.3% increase in February 2026.

The increase in the Non-oil index was mainly contributed by the Chemicals & Chemical Products index, led by higher prices of organic chemicals, as well as the Machinery & Transport Equipment, Miscellaneous Manufactured Articles, Manufactured Goods and Crude Materials indices. The increases were partially offset by declines in the Food & Live Animals, Animal & Vegetable Oils and Beverages & Tobacco indices.

Year-on-Year Change



The Domestic Supply Price Index rose 21.6% in March 2026 from a year ago, following the 2.4% increase in February 2026. The Oil and Non-oil indices surged 49.9% and 12.2% respectively.

Among the Non-oil sub-indices, increases were mainly driven by the Machinery & Transport Equipment index, resulting from higher prices of electrical machinery apparatus, as well as the Miscellaneous Manufactured Articles, Chemicals & Chemical Products, Manufactured Goods, Crude Materials and Beverages & Tobacco indices. The increases were partially offset by decreases in the Food & Live Animals and Animal & Vegetable Oils indices.

Technical Note

The **Singapore Manufactured Products Price Index (SMPPI)** monitors price changes of locally manufactured commodities. The weights of the index are derived from the distribution of local production by commodity in 2023. Ex-factory prices are obtained from principal manufacturers of the items concerned.

The **Domestic Supply Price Index (DSPI)** is designed to measure the changes in the price level of either goods manufactured locally or imported, which are retained for use in the domestic economy by the government, business or household sectors. For imported products, the prices refer to those paid by importers in bringing the goods into Singapore, commonly referred to as c.i.f. prices. In the case of Singapore manufactured products, the quotations used are ex-factory prices. The weight for each commodity item is proportional to the value of its total supply or availability in the domestic market in 2023.

The SMPPI has consistently recorded response rates of about 80% for each reference month, based on total production values of all selected commodities where price data could be collected from surveys and administrative sources for the month. The DSPI does not have a response rate given that it is a composite index of the SMPPI and the Import Price Index (IPI).

Index Formula

The 2023-based series is compiled using the 'modified Laspeyres' formula where the weight reference period of 2022 preceded the price reference period of 2023. The geometric mean formula has been adopted in the computation of unweighted elementary aggregate price indices. The arithmetic mean formula is applied in compiling indices at higher levels of aggregation where weights of specific sub-indices are available.

Measurement of Changes in Price Indices

Change over previous month compares the index of the month with that of the preceding month. Such comparisons measure the change in the price index between two consecutive months. They serve as useful short-term indicators of the price movements.

Change over same period of previous year measures change in the index over a twelve-month period. Such comparisons compare the movement in the price index between similar months in two consecutive years.

Linking the Old 2018-Based Price Index Series to the New 2023-Based Price Index Series

The SMPPI and DSPI have been rebased from base year 2018 to base year 2023. To facilitate comparison of the historical price indices across base years, the old 2018-based series are linked to the new 2023-based series by re-scaling them via a Linked Coefficient. The Linked Coefficient is the ratio of the annual 2023-based index in 2023 to the annual 2018-based index in 2023.

Example: Linking the old Iron & Steel Index series for SMPPI prior to 2023, to the 2023-based Iron & Steel Index (2023=100)

1) Calculate the linked coefficient

Year	Iron & Steel Index (2018=100)	Iron & Steel Index (2023=100)	Linked Coefficient
2023	135.6	100.0	$100.0 \div 135.6 = 0.737$

2) Re-scaling the old series to the 2023-based series using the Linked Coefficient

Year	Month	Iron & Steel Index (2018=100)	Iron & Steel Index (2023=100)
2021	Dec	125.6	$125.6 \times 0.737 = 92.6$
2022	Jan	127.2	$127.2 \times 0.737 = 93.7$

Rescaling the 2023-Based Index Series to Previous Years

To continue the old 2018-based index series going forward in time, re-scale the new 2023-based index series to the old base year 2018 level, via a Rescaling Coefficient. The Rescaling Coefficient is the ratio of the annual 2023-based index in 2023 to the annual 2023-based index in 2018.

Example: Rescaling the new 2023-based Iron & Steel Index series for SMPPI to the 2018-based Iron & Steel Index (2018=100)

1) Calculate the rescaling coefficient

Year	Annual Iron & Steel Index in 2023	Annual Iron & Steel Index in 2018	Rescaling Coefficient
2023	100.0	73.7	$100.0 \div 73.7 = 1.357$

2) Re-scaling the new series to the 2018-based series using the Rescaling Coefficient

Year	Month	Iron & Steel Index (2023=100)	Iron & Steel Index (2018=100)
2024	Jan	100.0	$100.0 \times 1.357 = 135.7$
2024	Feb	100.6	$100.6 \times 1.357 = 136.5$

Index Revision

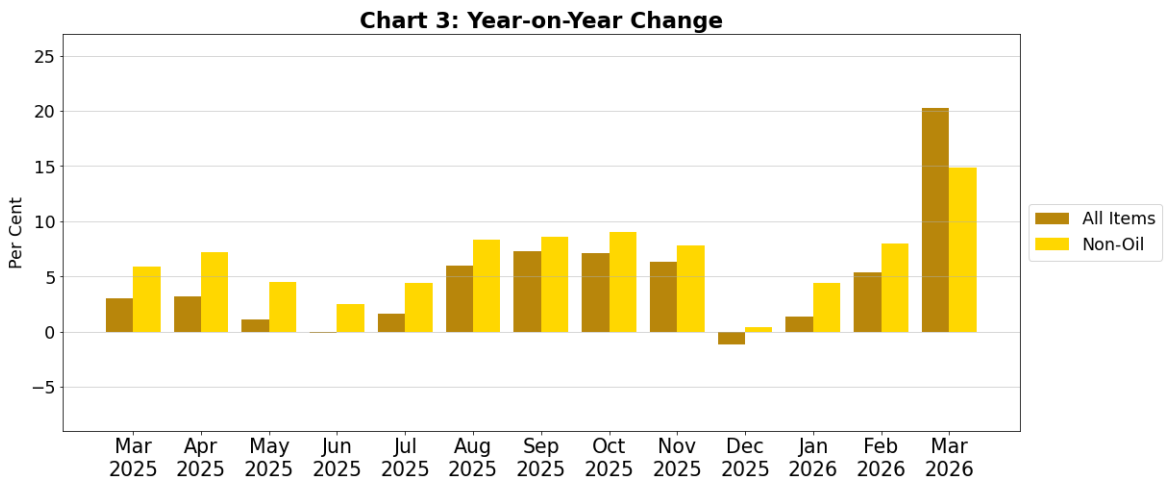
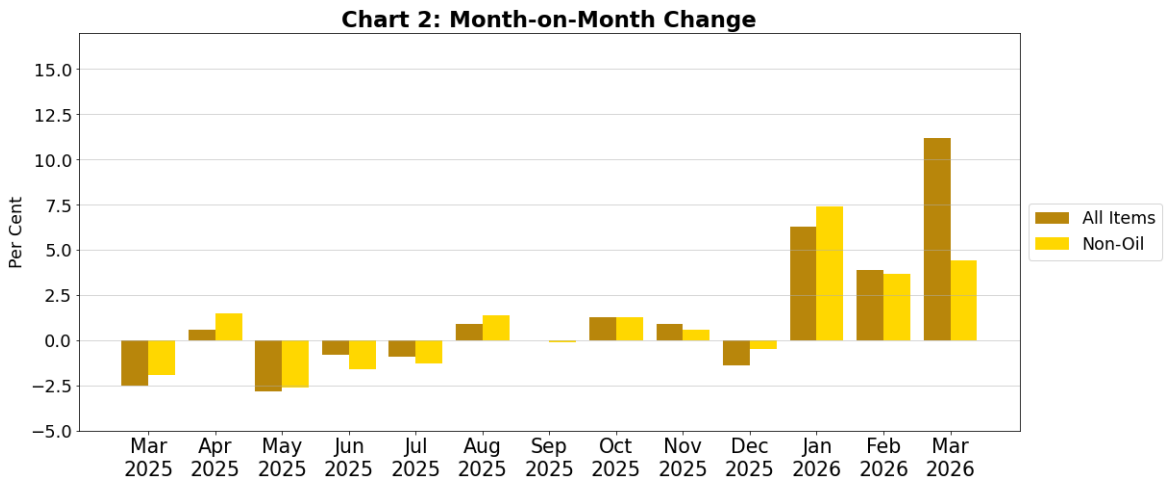
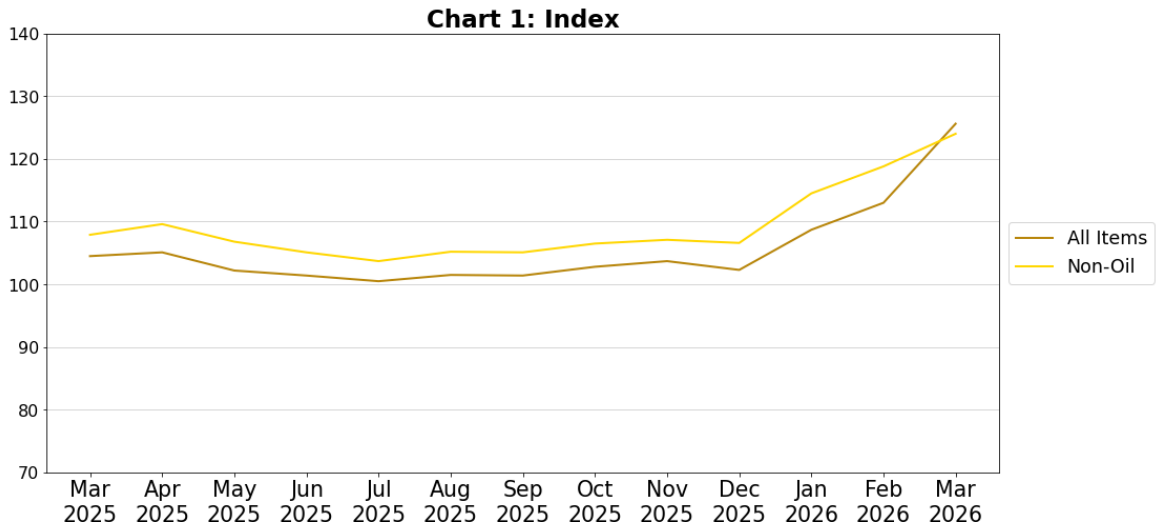
The indices may be revised when late returns and amendments received from respondents are incorporated.

Dissemination of Data

The Singapore Manufactured Products and Domestic Supply Price Indices are available on the SingStat Website (<https://tablebuilder.singstat.gov.sg/>)

For more information about the indices, please refer to the [Catalogue of Products](#) in Page 12.

Singapore Manufactured Products Price Index (2023 = 100) March 2026



Domestic Supply Price Index (2023 = 100) March 2026

Chart 4: Index

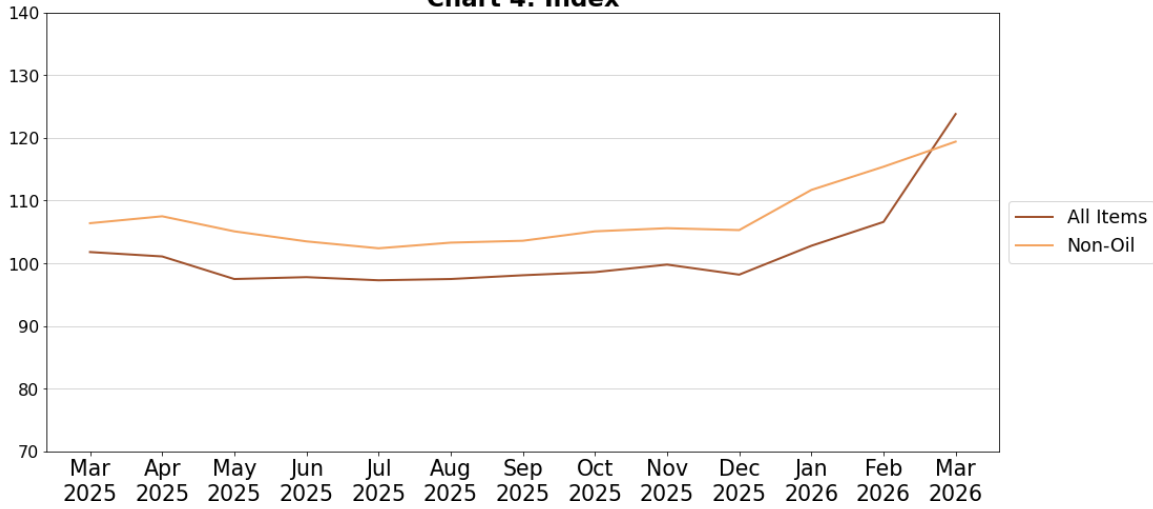


Chart 5: Month-on-Month Change

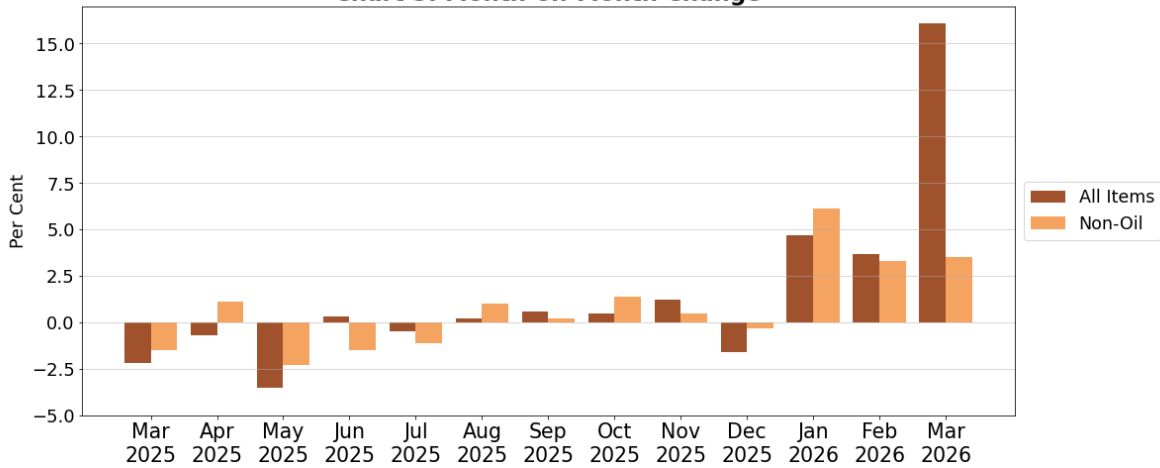


Chart 6: Year-on-Year Change

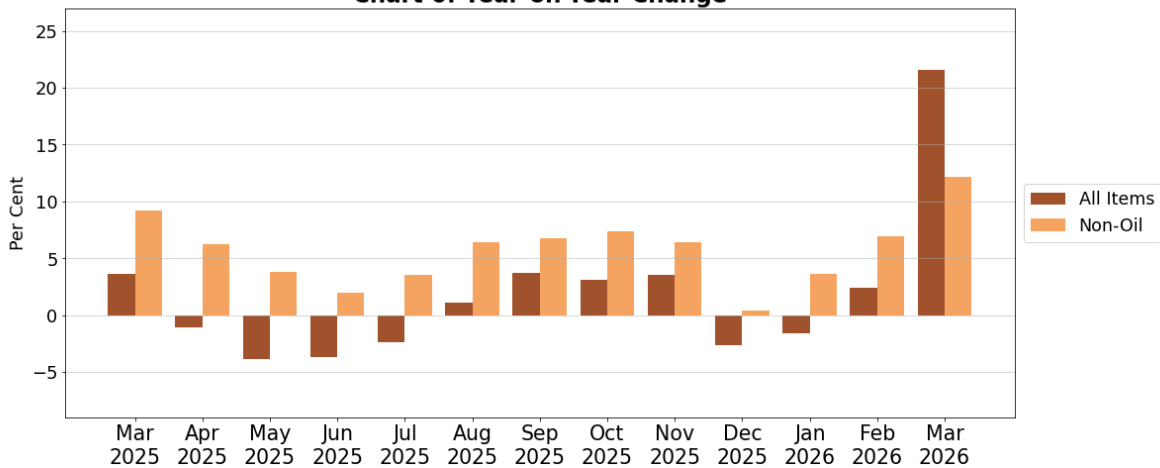


Table 1 Singapore Manufactured Products Price Index

March 2026

Commodity section / division	Weights	Index (2023=100)			% Change		
		Jan 2026	Feb 2026	Mar 2026	Feb 2026	Mar 2026	Mar 2026
					Jan 2026	Feb 2026	Mar 2025
All Items	10,000	108.7	113.0	125.6	3.9	11.2	20.3
Non-oil Items	8,369	114.5	118.8	124.0	3.7	4.4	14.9
Food & Live Animals	220	106.9	105.9	105.5	-0.9	-0.3	0.6
Meat & meat preparations	22	99.1	99.5	99.5	0.3	-	0.3
Dairy products & birds' eggs	11	113.7	113.4	113.2	-0.3	-0.1	6.3
Fish seafood & preparations	8	104.2	104.2	104.2	-	-	-
Cereals & cereal preparations	34	103.4	104.9	104.9	1.4	-	3.9
Vegetables & fruit	2	100.0	100.0	100.0	-	-	-
Coffee, tea, cocoa, spices & manufactures	17	156.9	140.0	137.6	-10.8	-1.7	-7.0
Animal feeding stuff (excl unmilled cereals)	9	89.5	88.9	89.5	-0.7	0.6	-10.3
Miscellaneous food preparations	116	103.1	103.2	102.9	0.1	-0.3	1.5
Beverages & Tobacco	14	98.6	98.6	98.6	-	-	2.2
Beverages	14	98.6	98.6	98.6	-	-	2.2
Crude Materials (excl fuels)	40	93.7	91.8	92.2	-2.1	0.4	-10.6
Crude rubber	34	91.5	89.3	89.7	-2.4	0.4	-13.3
Cork & wood	2	102.3	102.3	102.4	-	0.1	0.1
Crude fertilizers & minerals	2	100.6	100.5	100.3	-0.1	-0.2	1.5
Metalliferous ores & metal scrap	3	112.3	111.2	112.1	-1.0	0.8	11.0
Mineral Fuels, Lubricants & Related Materials	1,631	79.2	83.3	134.1	5.1	61.0	54.3
Petroleum & products & related materials	1,617	79.2	83.3	134.5	5.1	61.5	55.0
Gas	14	79.9	79.1	83.7	-1.0	5.9	-15.3
Animal & Vegetable Oils, Fats & Waxes	9	112.6	111.2	112.3	-1.2	1.0	6.0
Fixed vegetable fats & oils	9	112.6	111.2	112.3	-1.2	1.0	6.0
Chemicals & Chemical Products	1,795	86.3	86.9	100.1	0.6	15.2	6.4
Organic chemicals	767	79.6	80.8	108.9	1.6	34.7	16.3
Inorganic chemicals	45	112.8	111.4	114.5	-1.2	2.8	11.8
Dyeing, tanning & colouring materials	15	99.1	99.2	99.4	0.1	0.2	1.2
Medicinal & pharmaceutical products	253	94.1	95.4	98.9	1.4	3.7	0.6
Essential oils & perfume; toilet cleaning products	141	97.3	97.3	98.0	-	0.7	-0.9
Plastics in primary forms	272	85.3	84.5	87.0	-1.0	3.1	-8.2
Plastics in non-primary forms	18	89.4	89.4	89.4	-	-	-3.6
Chemical materials & products nes	284	88.0	87.9	89.3	-0.1	1.5	3.1
Manufactured Goods	255	95.3	95.0	97.1	-0.3	2.2	-
Rubber manufactures nes	11	94.5	90.6	90.7	-4.1	0.1	-7.9
Wood & cork manufactures (excl furniture)	7	88.8	88.7	88.8	-0.1	0.1	-0.1
Paper manufactures	31	94.0	93.9	94.4	-0.1	0.5	-1.2
Textile Yarn Fabrics Made-Up Articles Nes	7	88.5	86.5	87.2	-2.2	0.8	-10.3
Non-metal mineral manufactures nes	45	95.4	95.2	104.6	-0.2	9.9	7.9
Iron & steel	48	94.6	94.0	94.5	-0.6	0.6	-2.9
Non-ferrous metals	17	99.3	100.1	103.4	0.8	3.3	6.9
Manufactures of metals nes	88	96.6	96.5	96.6	-0.1	0.1	-1.7
Machinery & Transport Equipment	5,266	126.5	133.3	136.9	5.3	2.7	19.1
Machinery specialized for particular industries	661	96.9	96.6	96.9	-0.4	0.4	-1.6
Metal working machinery	17	94.5	93.5	94.4	-1.0	1.0	-4.3
General industrial machinery	65	101.2	100.1	101.0	-1.0	0.9	-2.6
Office machines & data-processing machines	589	101.2	100.8	101.3	-0.4	0.5	0.6
Telecommunication apparatus	79	97.1	96.1	97.0	-1.0	0.9	-4.2
Electrical machinery apparatus nes, electrical parts	3,856	136.6	146.0	150.8	6.9	3.3	25.2
Miscellaneous Manufactured Articles	772	107.8	107.4	108.2	-0.4	0.7	11.2
Furniture, bedding, mattresses, cushions & others	16	105.4	105.8	105.8	0.4	-	1.7
Travel goods, handbags & similar containers	0	100.0	100.0	100.0	-	-	-
Professional scientific & controlling instruments	455	111.0	108.9	110.4	-1.8	1.3	16.6
Photographic & optical goods nes; watches & clocks	42	94.0	93.4	94.0	-0.6	0.7	-4.3
Miscellaneous manufactured articles nes	259	104.6	106.9	106.7	2.3	-0.2	5.3

Figures may not sum to total due to rounding.

Table 2 Domestic Supply Price Index

March 2026

Commodity section / division	Weights	Index (2023=100)			% Change		
					Feb 2026	Mar 2026	Mar 2026
		Jan 2026	Feb 2026	Mar 2026	Jan 2026	Feb 2026	Mar 2025
All Items	10,000	102.8	106.6	123.8	3.7	16.1	21.6
Non-oil Items	7,196	111.7	115.4	119.4	3.3	3.5	12.2
Food & Live Animals	274	103.5	103.6	103.3	0.2	-0.3	-3.3
Live animals	6	88.5	92.3	86.6	4.3	-6.1	-3.4
Meat & meat preparations	45	104.4	104.4	104.6	-	0.2	1.6
Dairy products & birds' eggs	34	98.6	98.6	98.3	-	-0.3	-1.4
Fish seafood & preparations	30	100.7	99.9	100.3	-0.8	0.4	-1.0
Cereals & cereal preparations	42	100.6	101.5	101.6	0.9	-	2.0
Vegetables & fruit	37	95.2	95.5	95.8	0.3	0.3	-4.6
Sugar, sugar preparations & honey	7	85.6	84.2	84.3	-1.6	0.1	-12.3
Coffee, tea, cocoa, spices & manufactures	22	147.3	150.6	147.2	2.3	-2.3	-13.9
Animal feeding stuff (excl unmilled cereals)	7	95.0	94.9	93.7	-0.2	-1.3	-8.8
Miscellaneous food preparations	44	102.6	101.1	101.0	-1.5	-0.1	-4.0
Beverages & Tobacco	26	102.4	101.7	101.4	-0.7	-0.4	2.6
Beverages	23	100.9	100.6	100.1	-0.3	-0.5	2.3
Tobacco & manufactures	3	113.7	110.4	110.8	-2.9	0.4	4.7
Crude Materials (excl fuels)	75	101.7	105.9	107.4	4.1	1.4	8.4
Hides Skins & Furskins	1	100.0	100.0	100.0	-	-	-
Oil seeds & oleaginous fruits	1	93.5	93.0	93.7	-0.5	0.7	0.7
Crude rubber	26	91.8	89.8	90.3	-2.2	0.6	-12.3
Cork & wood	3	99.2	98.1	97.8	-1.1	-0.3	0.5
Crude fertilizers & minerals	18	113.9	114.7	116.7	0.7	1.7	3.8
Metalliferous ores & metal scrap	21	103.1	120.4	123.1	16.7	2.3	47.7
Crude animal & vegetable materials nes	6	106.0	106.1	107.5	0.1	1.3	8.8
Mineral Fuels, Lubricants & Related Materials	2,804	79.9	84.2	135.0	5.4	60.4	49.9
Petroleum & products & related materials	2,624	80.2	84.4	137.7	5.3	63.2	53.4
Gas	180	75.6	81.1	96.2	7.2	18.7	1.3
Animal & Vegetable Oils, Fats & Waxes	67	93.1	93.5	92.2	0.4	-1.4	-0.3
Fixed vegetable fats & oils	21	100.3	99.7	101.5	-0.6	1.8	-0.4
Inedible Mixtures Of Animal Or Vegetable Fats Or Oils	46	89.8	90.6	87.9	0.9	-3.0	-0.2
Chemicals & Chemical Products	1,225	86.6	87.3	98.9	0.7	13.4	4.3
Organic chemicals	573	80.1	81.5	105.3	1.8	29.1	12.5
Inorganic chemicals	56	109.6	110.1	111.4	0.5	1.2	10.1
Dyeing, tanning & colouring materials	42	93.6	93.5	94.4	-0.1	1.0	-3.3
Medicinal & pharmaceutical products	100	98.1	99.3	100.4	1.2	1.2	-4.8
Essential oils & perfume; toilet cleaning products	77	97.4	97.6	98.0	0.2	0.4	-0.3
Plastics in primary forms	141	83.7	82.8	84.9	-1.1	2.6	-8.6
Plastics in non-primary forms	33	91.9	91.7	91.9	-0.2	0.2	-2.8
Chemical materials & products nes	204	88.8	88.4	89.1	-0.5	0.8	-2.1
Manufactured Goods	416	98.5	98.1	99.6	-0.4	1.5	3.0
Rubber manufactures nes	7	93.1	93.2	93.7	0.1	0.5	-1.6
Wood & cork manufactures (excl furniture)	14	90.0	89.5	88.1	-0.5	-1.6	-3.8
Paper manufactures	34	92.7	92.7	93.9	0.1	1.3	-1.0
Textile manufactures	13	94.8	94.8	95.5	-	0.7	-2.3
Non-metal mineral manufactures nes	83	95.5	95.5	99.6	-	4.3	1.8
Iron & steel	97	88.4	87.9	88.7	-0.6	1.0	-3.8
Non-ferrous metals	47	140.2	139.0	141.2	-0.8	1.6	34.1
Manufactures of metals nes	120	95.5	95.2	95.6	-0.3	0.4	-1.6
Machinery & Transport Equipment	4,316	121.5	127.2	130.3	4.7	2.4	16.4
Power-generating machinery & equipment	120	113.2	112.8	112.4	-0.3	-0.4	3.5
Machinery specialized for particular industries	415	93.9	93.6	93.9	-0.3	0.3	-3.9
Metal working machinery	18	92.1	92.6	90.7	0.5	-2.0	-3.3
General industrial machinery	156	99.7	98.6	99.3	-1.1	0.7	0.4
Office machines & data-processing machines	495	100.3	100.0	100.5	-0.2	0.4	0.1
Telecommunication apparatus	115	96.0	96.1	96.8	0.1	0.8	-1.0
Electrical machinery apparatus nes, electrical parts	2,950	131.9	140.4	144.8	6.5	3.1	23.2
Road vehicles	47	102.1	102.1	100.5	-	-1.6	-1.9
Miscellaneous Manufactured Articles	797	110.1	110.5	111.5	0.4	0.9	10.4
Prefab building, sanitary plumbing, lighting nes	6	89.9	89.2	90.3	-0.8	1.2	-2.2
Furniture, bedding, mattresses, cushions & others	30	105.5	106.1	106.2	0.6	0.1	3.9
Travel goods, handbags & similar containers	20	115.3	115.4	115.5	0.1	0.1	6.1
Articles of apparel & clothing accessories	27	87.7	87.6	88.6	-0.1	1.1	-3.5
Footwear	6	104.8	102.7	101.4	-2.0	-1.3	-2.2
Professional scientific & controlling instruments	387	104.0	102.5	103.4	-1.5	0.9	9.0
Photographic & optical goods nes; watches & clocks	59	101.2	101.4	101.9	0.2	0.5	-0.1
Miscellaneous manufactured articles nes	261	124.1	127.7	129.2	2.9	1.2	17.2

Figures may not sum to total due to rounding.

Table 3 Singapore Manufactured Products Price Index

Section	All Items	Non-oil Items	Food & Live Animals	Beverages & Tobacco	Crude Materials	Mineral Fuels	Animal & Vegetable Oils, Fats & Waxes	Chemicals & Chemical Products	Manufactured Goods	Machinery & Transport Equipment	Misc. Manufactured Articles
Weights	10,000	8,369	220	14	40	1,631	9	1,795	255	5,266	772
Index (2023=100)											
2022	104.7	102.8	96.0	95.6	102.2	115.0	128.3	108.4	102.2	101.5	100.4
2023	100.0	100.0	100.0	100.0	100.0	100.0	100.0	100.0	100.0	100.0	100.0
2024	99.5	100.7	102.8	97.2	103.4	93.3	94.1	97.6	98.3	102.9	93.4
2025	103.3	106.9	106.1	97.2	99.4	84.8	111.5	90.5	96.1	113.8	102.8
2025											
Mar	104.5	107.9	104.9	96.5	103.1	86.9	105.9	94.0	97.1	114.9	97.3
Apr	105.1	109.6	105.9	96.5	102.2	82.5	106.0	93.2	96.6	117.1	102.1
May	102.2	106.8	104.8	97.5	100.0	78.9	115.4	89.8	96.1	113.8	102.7
Jun	101.4	105.1	105.1	97.5	99.8	82.5	114.1	89.1	95.6	111.0	105.2
Jul	100.5	103.7	106.4	97.7	99.2	84.1	111.4	88.2	95.6	109.4	103.6
Aug	101.5	105.2	108.1	97.7	97.2	82.3	113.8	88.6	95.6	111.2	105.7
Sep	101.5	105.1	106.7	97.7	97.0	82.7	113.4	89.0	95.2	110.8	106.5
Oct	102.8	106.5	107.3	97.7	95.5	83.6	114.3	88.2	95.5	113.0	108.5
Nov	103.7	107.1	106.7	97.7	95.1	86.1	116.1	88.1	95.6	114.3	107.4
Dec	102.3	106.6	106.5	97.7	93.3	80.0	115.5	87.3	95.8	113.6	108.5
2026											
Jan	108.7	114.5	106.9	98.6	93.7	79.2	112.6	86.3	95.3	126.5	107.8
Feb	113.0	118.8	105.9	98.6	91.8	83.3	111.2	86.9	95.0	133.3	107.4
Mar	125.6	124.0	105.5	98.6	92.2	134.1	112.3	100.1	97.1	136.9	108.2
Percentage Change over same period of previous year (%)											
2023	-4.5	-2.7	4.2	4.5	-2.2	-13.0	-22.1	-7.7	-2.1	-1.5	-0.4
2024	-0.5	0.7	2.8	-2.8	3.4	-6.7	-5.9	-2.4	-1.7	2.9	-6.6
2025	3.8	6.1	3.2	0.1	-3.8	-9.1	18.5	-7.3	-2.2	10.5	10.1
2025											
Mar	3.0	5.9	3.8	-2.0	4.0	-12.6	15.8	-6.6	-1.6	11.3	0.9
Apr	3.2	7.2	2.8	-2.0	-0.2	-17.9	15.7	-7.7	-2.5	13.0	6.8
May	1.1	4.5	1.7	-1.0	-0.6	-17.6	25.6	-10.4	-3.3	9.3	8.6
Jun	-0.1	2.5	0.6	-1.0	-2.3	-14.5	20.1	-9.7	-3.1	5.4	13.2
Jul	1.6	4.4	3.7	-0.8	-5.0	-12.9	18.0	-10.3	-3.3	8.8	11.8
Aug	6.0	8.3	5.4	2.4	-7.0	-6.7	20.9	-8.4	-2.5	13.6	16.4
Sep	7.3	8.6	4.7	2.4	-7.7	-0.1	23.0	-5.3	-1.7	12.6	17.8
Oct	7.1	9.0	3.6	2.4	-10.1	-4.1	21.5	-6.3	-1.5	13.5	18.7
Nov	6.3	7.8	2.0	2.4	-11.7	-2.0	21.9	-7.2	-1.4	11.6	21.3
Dec	-1.2	0.4	1.2	2.4	-14.4	-10.7	12.6	-8.7	-1.5	0.7	20.6
2026											
Jan	1.4	4.4	1.4	2.2	-11.9	-16.6	6.5	-9.0	-2.1	7.0	18.6
Feb	5.4	8.0	0.4	2.2	-11.9	-10.3	4.1	-8.8	-2.2	12.8	13.1
Mar	20.3	14.9	0.6	2.2	-10.6	54.3	6.0	6.4	-	19.1	11.2

Table 4 Domestic Supply Price Index

Section	All Items	Non-oil Items	Food & Live Animals	Beverages & Tobacco	Crude Materials	Mineral Fuels	Animal & Vegetable Oils, Fats & Waxes	Chemicals & Chemical Products	Manufactured Goods	Machinery & Transport Equipment	Misc. Manufactured Articles
Weights	10,000	7,196	274	26	75	2,804	67	1,225	416	4,316	797
Index (2023=100)											
2022	107.2	102.1	98.5	96.4	99.2	119.2	126.9	106.0	104.0	101.6	99.1
2023	100.0	100.0	100.0	100.0	100.0	100.0	100.0	100.0	100.0	100.0	100.0
2024	98.7	99.5	102.5	97.8	97.5	96.7	92.1	97.3	97.2	101.0	96.0
2025	99.7	105.3	104.9	99.5	98.2	85.3	93.5	90.9	96.2	110.7	104.7
2025											
Mar	101.8	106.4	106.8	98.8	99.1	90.1	92.4	94.9	96.7	111.9	101.0
Apr	101.1	107.5	106.1	99.4	98.9	84.5	93.4	93.1	96.5	113.7	104.7
May	97.5	105.1	105.2	99.7	98.0	78.2	94.1	90.5	95.4	110.6	104.2
Jun	97.8	103.5	104.2	99.6	99.8	83.2	93.1	89.4	95.2	108.2	105.7
Jul	97.3	102.4	103.6	99.5	98.0	84.4	92.0	88.5	95.1	106.8	104.6
Aug	97.5	103.3	103.7	99.5	97.1	82.5	92.4	88.5	95.3	108.1	106.0
Sep	98.1	103.6	104.1	99.6	99.2	84.1	93.3	89.1	95.6	108.0	107.2
Oct	98.6	105.1	104.6	100.1	97.7	82.0	94.1	88.7	96.4	110.0	109.6
Nov	99.8	105.6	104.4	99.9	99.0	84.9	94.9	88.7	96.5	111.1	108.8
Dec	98.2	105.3	104.2	100.3	99.8	80.0	94.9	87.9	97.2	110.5	109.9
2026											
Jan	102.8	111.7	103.5	102.4	101.7	79.9	93.1	86.6	98.5	121.5	110.1
Feb	106.6	115.4	103.6	101.7	105.9	84.2	93.5	87.3	98.1	127.2	110.5
Mar	123.8	119.4	103.3	101.4	107.4	135.0	92.2	98.9	99.6	130.3	111.5
Percentage Change over same period of previous year (%)											
2023	-6.7	-2.1	1.5	3.8	0.8	-16.1	-21.2	-5.7	-3.9	-1.6	1.0
2024	-1.3	-0.5	2.5	-2.2	-2.5	-3.3	-7.9	-2.7	-2.8	1.0	-4.0
2025	1.0	5.8	2.4	1.8	0.7	-11.8	1.5	-6.6	-1.0	9.6	9.1
2025											
Mar	3.6	9.2	5.7	0.6	1.3	-11.5	7.2	-4.7	-0.7	15.5	3.2
Apr	-1.1	6.2	4.4	1.7	1.9	-19.2	-0.8	-7.0	-1.3	10.6	7.4
May	-3.9	3.8	3.1	1.1	-1.3	-23.5	-2.9	-8.8	-2.7	7.4	7.7
Jun	-3.7	2.0	2.1	0.6	2.8	-18.3	-4.5	-8.9	-2.8	3.9	10.9
Jul	-2.4	3.5	0.8	0.9	1.8	-17.0	6.2	-9.6	-2.7	6.8	9.7
Aug	1.1	6.4	0.6	2.3	-3.0	-12.7	7.1	-8.1	-1.6	10.7	12.4
Sep	3.7	6.8	1.3	2.2	2.5	-5.0	4.3	-5.5	-0.4	10.1	13.9
Oct	3.1	7.4	1.2	3.1	-0.3	-9.0	2.1	-6.2	0.6	11.0	15.4
Nov	3.5	6.4	0.4	3.5	2.3	-4.9	8.0	-6.9	0.1	9.3	16.1
Dec	-2.6	0.4	-0.6	4.2	3.7	-11.7	2.1	-8.0	-	0.1	15.8
2026											
Jan	-1.6	3.6	-2.2	3.9	4.3	-16.6	-1.7	-9.5	1.0	5.6	14.8
Feb	2.4	6.9	-1.9	3.0	11.8	-10.8	1.0	-8.7	1.1	10.8	11.4
Mar	21.6	12.2	-3.3	2.6	8.4	49.9	-0.3	4.3	3.0	16.4	10.4

NOTATIONS

nes not elsewhere specified
- nil or negligible

NOTES

The Singapore Manufactured Products and Domestic Supply Price Indices report contains statistics that are the most recent available at the time of its preparation.

Some statistics, particularly those for the most recent time periods, are provisional and may be subject to revision in later issues.

Catalogue of Products



[Latest Data using the SingStat Table Builder](#)



[Producer Price Indices Methodology](#)



[Visualising Data: Dashboards, Infographics](#)



[Video: What is the Producer Price Index \(PPI\)?](#)



[Singapore Manufactured Products & Domestic Supply Price Indices Report](#)



[More Info Related to PPI](#)



Singapore Department of Statistics
29 Apr 2026

Find us on:



SINGAPORE DEPARTMENT OF STATISTICS COMMUNICATIONS & INFORMATION SERVICES

The Singapore Department of Statistics (DOS) offers official statistics, data insights, visualisations, and statistical resources through user-friendly platforms.



SingStat Website

Visit this convenient gateway to access latest data and statistical information.

Data across the six major themes of Economy & Prices, Industry, Trade & Investment, Population, Households, and Society covering some 200 topics such as Gross Domestic Product, Consumer Price Index, Retail Sales and Food & Beverage Services Indices, Producer Price Indices, Business Expectations, Business Receipts Index, Trade in Services, Direct Investment, Population Indicators, Household Income, Household Expenditure, Deaths and Life Expectancy, Births and Fertility, Marriages and Divorces, and more.



Publications

- **Statistics Singapore Newsletter** - features articles on latest key statistical activities, recent survey findings, and methodological improvements.
- **Information Papers** - highlight conceptual and methodological changes and improvements in official statistics.
- **Occasional Papers** - present statistical trends and observations on important social and economic issues to stimulate discussion and research.
- **Singapore in Figures** - allows exploration of key economic and socio-demographic statistics through interactive dashboards.

Visualisations such as infographics and interactive dashboards with latest data, and videos to explain data and statistical concepts.

Businesses Insights Tool for Enterprises (BITE) serves businesses with bite-sized data for big decisions, giving firms insights on their customers, industries, and business performance.

Advance Release Calendar with dates of upcoming data and publication releases in the next twelve months.



SingStat Table Builder

Access some 2,400 data tables for free across various economic and socio-demographic domains from 70 public sector agencies. Watch the [video](#) to find out how you can easily access and customise data tables.



SANDRA (Statistics AND Data Retrieval A.I. Assistant)

Chat with SANDRA on your data enquiries. Watch the [video](#) to find out how SANDRA can assist you in finding the data you need.



SingStat Express

Subscribe to receive alerts on the latest press releases, occasional/ information papers, and newsletters.



SingStat Mobile App

Download the app for fast and convenient access to commonly used statistics from your mobile devices.

Over 300 charts are available across over 40 data categories for easy access to visualise data trends.



For statistical enquiries, you may reach us at:

✉ email: info@singstat.gov.sg or submit the [Data Request Form](#)

☎ phone: 1800-323 8118* (Local users) or (65) 6332 7738 (Overseas users)

* Calls from mobile telephone lines to 1800 local toll-free number may be subject to mobile airtime charges as imposed by the relevant mobile service provider.

Find us on social media!

@SingStat

@singstat_dos

@SingStatvideo

@sg-department-of-statistics

DEPARTMENT OF
**STATISTICS
SINGAPORE**

— Empowering You with Trusted Data —