

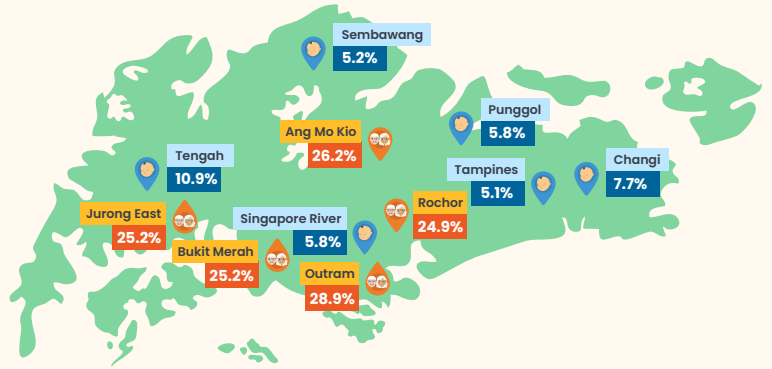
# Geographical Distribution & Transport

With a total population of **6.11 million** in 2025, there was an average of **8,300 persons per square kilometer** in Singapore.



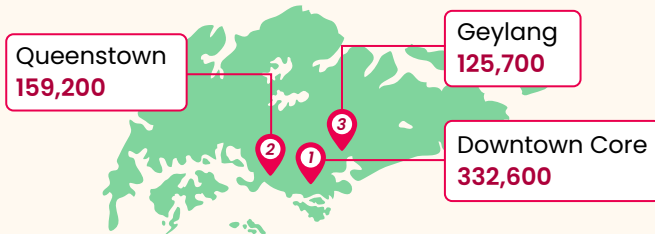
**Outram, Ang Mo Kio, Jurong East, Bukit Merah and Rochor** had the highest proportions of residents aged 65 years and over.

**Tengah, Changi, Punggol, Singapore River, Sembawang and Tampines** had the highest proportions of residents aged below 5 years.



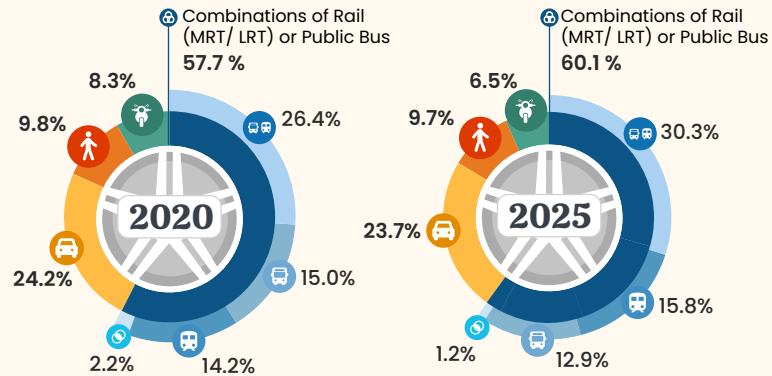
## Top 3 Planning Areas of Workplace with the Most Employed Residents

Among all employed residents aged 15 years and over with a fixed location for work, **Downtown Core, Queenstown and Geylang** were the top 3 planning areas where employed residents travelled to for work.



## Mode of Transport to Work

Public transport remained the dominant mode of transport to work, with 60.1% of employed residents relying on combinations of Rail (MRT/ LRT) or public bus to travel to work.



## Main Mode of Transport to School by Level of Education

Level of Education	2020 (%)	2025 (%)
Primary and Below: No Transport Required	43.0%	42.3%
Secondary: Public Bus Only	36.9%	36.8%
Post-Secondary (Non-Tertiary): Rail (MRT/ LRT) & Public Bus Only	46.9%	46.9%
Polytechnic Diploma: Rail (MRT/ LRT) & Public Bus Only	51.2%	49.6%
Professional Qualification and Other Diploma: Rail (MRT/ LRT) & Public Bus Only	50.1%	44.4%
University: Rail (MRT/ LRT) & Public Bus Only	52.8%	55.2%

## Median Travelling Time to Work

Between 2020 and 2025, the median travelling time to work was largely stable across the different modes of transport.

Mode of Transport	2020 (min)	2025 (min)
Combinations of Rail (MRT/ LRT) or Public Bus	45	45
Public Bus Only	37	35
Rail (MRT/ LRT) Only	45	45
Rail (MRT/ LRT) & Public Bus Only	60	56
Combinations of Rail (MRT/ LRT) and/or Public Bus, with Other Modes	50	60
Car or Taxi/ Private Hire Car Only	30	30
Other Modes	30	30
No Transport Required	8	5