



Import & Export Price Indices March 2026

IMPORT AND EXPORT PRICE INDICES, March 2026
ISSN 2591-7463

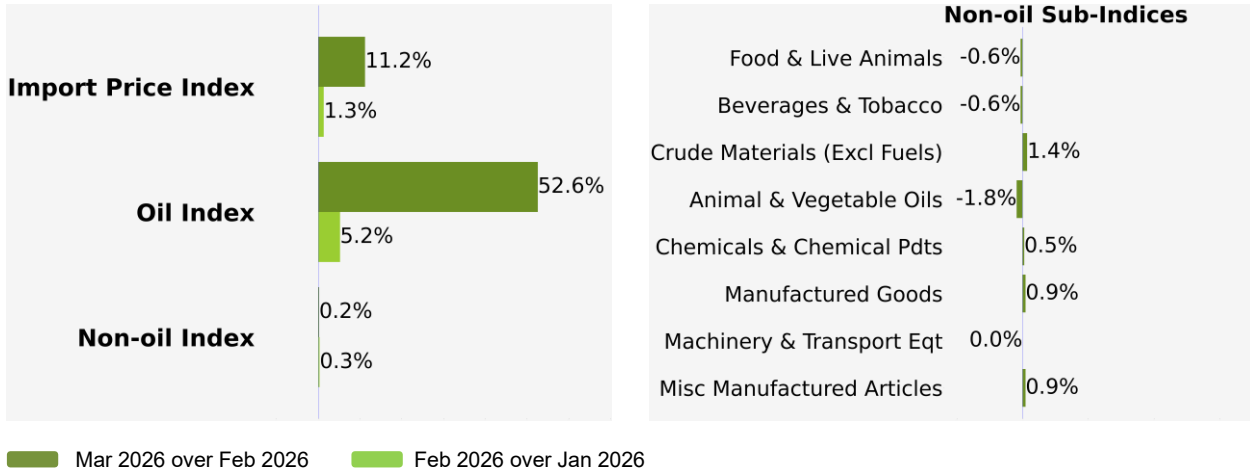
© Department of Statistics, Ministry of Trade & Industry, Republic of Singapore

Reproducing or quoting any part of this publication is permitted, provided this publication is accredited as the source. Please refer to the SingStat Website Terms of Use (<http://www.singstat.gov.sg/terms-of-use>) for more details on the conditions of use of this publication.

Import Price Index (2023 = 100)

March 2026

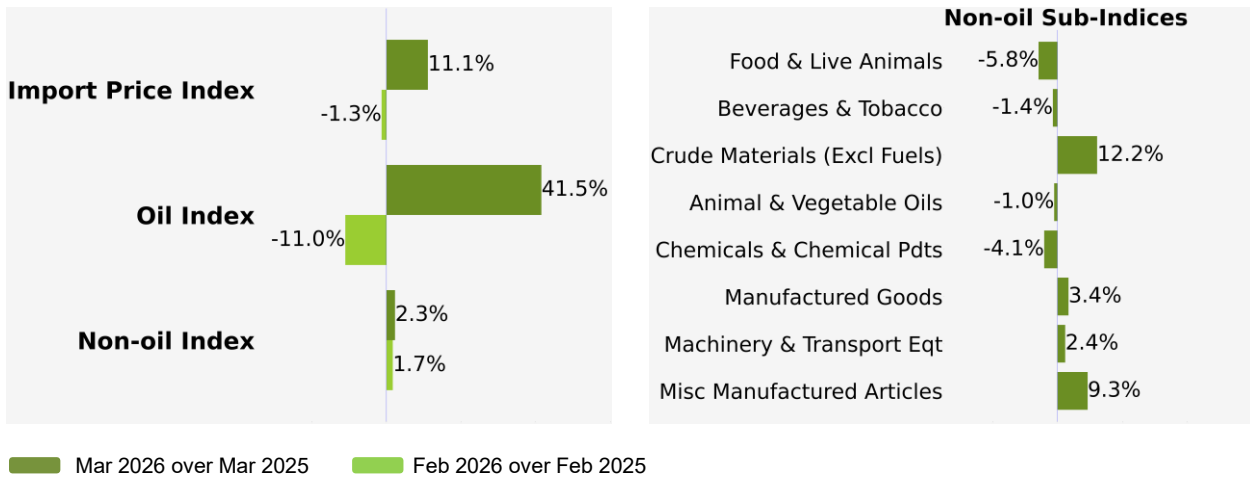
Month-on-Month Change



The Import Price Index rose 11.2% in March 2026, following the 1.3% increase in February 2026. The Oil index spiked 52.6%, mainly due to higher prices of petroleum and products, as compared to the 5.2% increase in the previous month. The Non-oil index rose 0.2% in March 2026, after the 0.3% increase in February 2026.

The increase in the Non-oil index was due to the Miscellaneous Manufactured Articles, Manufactured Goods, Chemicals & Chemical Products and Crude Materials indices. The increases were partially offset by decreases in the Food & Live Animals, Animal & Vegetable Oils and Beverages & Tobacco indices.

Year-on-Year Change

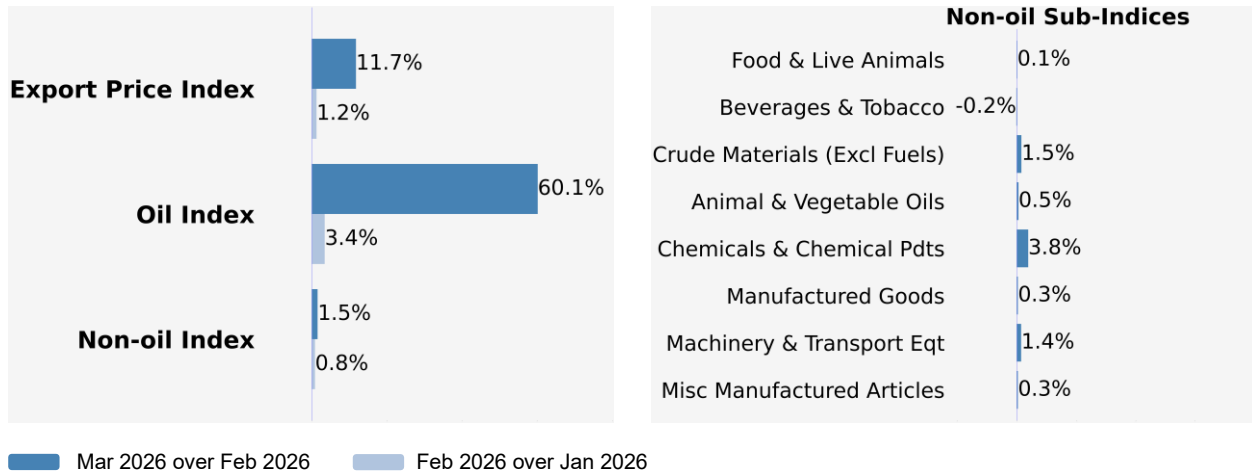


The Import Price Index rose 11.1% in March 2026 from a year ago, in contrast to the 1.3% decrease in February 2026. The Oil and Non-oil indices gained 41.5% and 2.3% respectively.

Among the Non-oil sub-indices, the increase was due to the Machinery & Transport Equipment index, attributed to higher prices of electrical machinery apparatus, as well as the Miscellaneous Manufactured Articles, Manufactured Goods and Crude Materials indices. The increases were partially moderated by decreases in the Chemicals & Chemical Products, Food & Live Animals, Beverages & Tobacco and Animal & Vegetable Oils indices.

Export Price Index (2023 = 100) March 2026

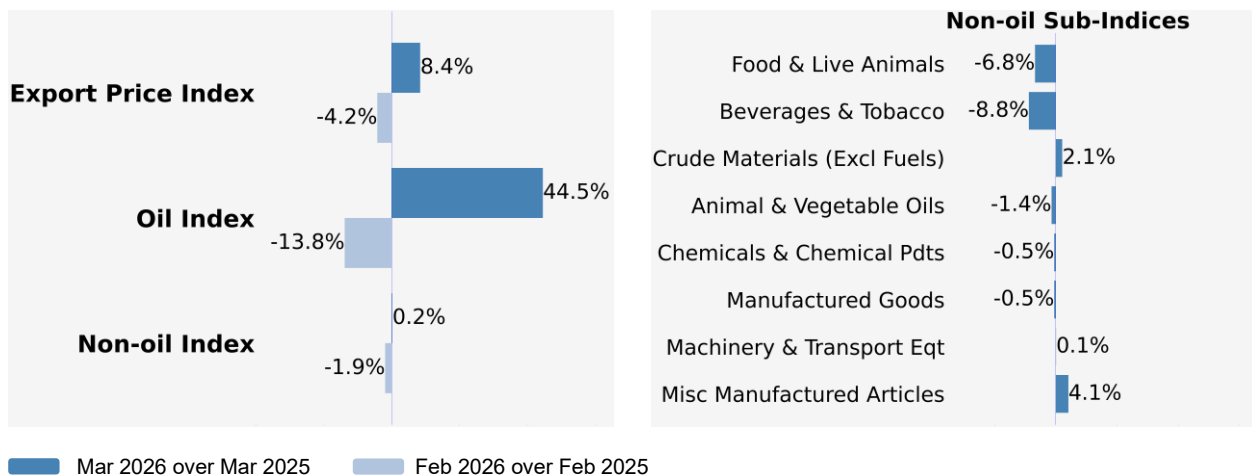
Month-on-Month Change



The Export Price Index rose 11.7% in March 2026, extending the 1.2% increase in February 2026. The Oil index surged 60.1%, mainly due to higher prices of petroleum and products, continuing the 3.4% increase in the previous month. The Non-oil index rose 1.5% in March 2026, after the 0.8% increase in February 2026.

The increase in the Non-oil index was due to the Machinery & Transport Equipment index, attributed to higher prices of electrical machinery apparatus, as well as the Chemicals & Chemical Products, Miscellaneous Manufactured Articles, Crude Materials, Manufactured Goods, Food & Live Animals and Animal & Vegetable Oils indices. The increases were partially offset by the decrease in the Beverages & Tobacco index.

Year-on-Year Change



The Export Price Index rose 8.4% in March 2026 from a year ago, reversing the 4.2% decrease in February 2026. The Oil and Non-oil indices gained 44.5% and 0.2% respectively.

Among the Non-oil sub-indices, the increase was mainly driven by the Miscellaneous Manufactured Articles index, attributed to higher prices of articles of precious and semiprecious materials, as well as the Machinery & Transport Equipment and Crude Materials indices. The increases were partially moderated by decreases in the Food & Live Animals, Beverages & Tobacco, Chemicals & Chemical Products, Manufactured Goods and Animal & Vegetable Oils indices.

Technical Note

The **Import Price Index (IPI)** is used primarily as an indicator to track the price trends of imported goods into Singapore. Prices of imports, valued at CIF terms (cost, insurance and freight) are obtained monthly from major importers. The weighting pattern of the index is derived from import statistics for 2023.

The **Export Price Index (EPI)** measures changes in the price of all exports of merchandise from Singapore, including re-exports. In general, prices are obtained from major exporters of the selected commodities. Prices used in the index computation, are the prices of goods that physically leave Singapore's main ports of export; also termed as Free on Board (FOB) prices. The weights of the index are derived from the distribution of export by commodity in 2023.

The IPI and EPI have consistently recorded response rates of about 80% respectively for each reference month, based on total import and export values of all selected commodities where price data could be collected from surveys and administrative sources.

Index Formula

The 2023-based series is compiled using the Laspeyres formula where the price and weight reference periods are aligned to the year 2023. The geometric mean formula has been adopted in the computation of unweighted elementary aggregate price indices. The arithmetic mean formula is applied in compiling indices at higher levels of aggregation where weights of specific sub-indices are available.

Measurement of Changes in Price Indices

Change over previous month compares the index of the month with that of the preceding month. Such comparisons measure the change in the price index between two consecutive months. They serve as useful short-term indicators of the price movements.

Change over same period of previous year measures change in the index over a twelve-month period. Such comparisons compare the movement in the price index between similar months in two consecutive years.

Linking the Old 2018-Based Price Index Series to the New 2023-Based Price Index Series

The IPI and EPI have been rebased from base year 2018 to base year 2023. To facilitate comparison of the historical price indices across base years, the old 2018-based series are linked to the new 2023-based series by re-scaling them via a Linked Coefficient. The Linked Coefficient is the ratio of the annual 2023-based index in 2023 to the annual 2018-based index in 2023.

Example: Linking the old Iron & Steel Index series for IPI prior to 2023, to the 2023-based Iron & Steel Index (2023=100)

1) Calculate the linked coefficient

Year	Iron & Steel Index (2018=100)	Iron & Steel Index (2023=100)	Linked Coefficient
2023	117.2	100.0	$100.0 \div 117.2 = 0.853$

2) Re-scaling the old series to the 2023-based series using the Linked Coefficient

Year	Month	Iron & Steel Index (2018=100)	Iron & Steel Index (2023=100)
2021	Dec	130.3	$130.3 \times 0.853 = 111.1$
2022	Jan	128.7	$128.7 \times 0.853 = 109.8$

Rescaling the 2023-Based Index Series to Previous Years

To continue the old index series going forward in time, re-scale the new 2023-based index series to the old base year level, via a Rescaling Coefficient. The Rescaling Coefficient is the ratio of the annual 2023-based index in 2023 to the annual 2023-based index in the old base year.

Example: Rescaling the new 2023-based Iron & Steel Index series for IPI to the 2018-based Iron & Steel Index (2018=100)

1) Calculate the rescaling coefficient

Base Year	Annual Iron & Steel Index in 2023	Annual Iron & Steel Index in 2018	Linked Coefficient
2023	100.0	85.3	$100.0 \div 85.3 = 1.172$

2) Re-scaling the new series to the 2018-based series using the Rescaling Coefficient

Year	Month	Iron & Steel Index (2023=100)	Iron & Steel Index (2018=100)
2024	Jan	95.6	$95.6 \times 1.172 = 112.0$
2024	Feb	95.3	$95.3 \times 1.172 = 111.7$

Index Revision

The indices may be revised when late returns and amendments received from respondents are incorporated.

Dissemination of Data

The Import and Export Price Indices are available on the SingStat Website (<https://tablebuilder.singstat.gov.sg/>).

For more information about the indices, please refer to the [Catalogue of Products](#) in Page 12.

Import Price Index (2023 = 100)

March 2026

Chart 1: Index

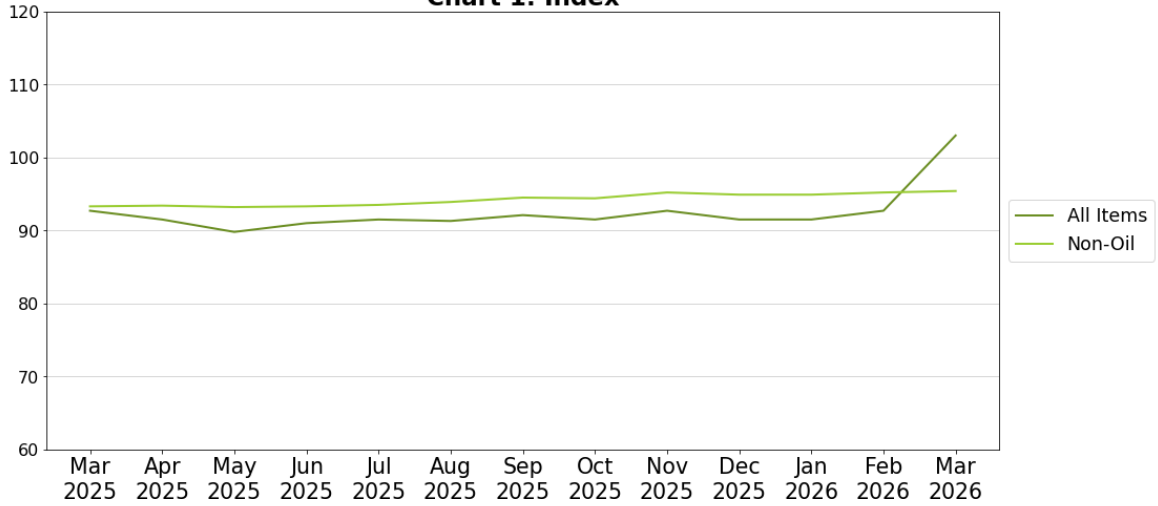


Chart 2: Month-on-Month Change

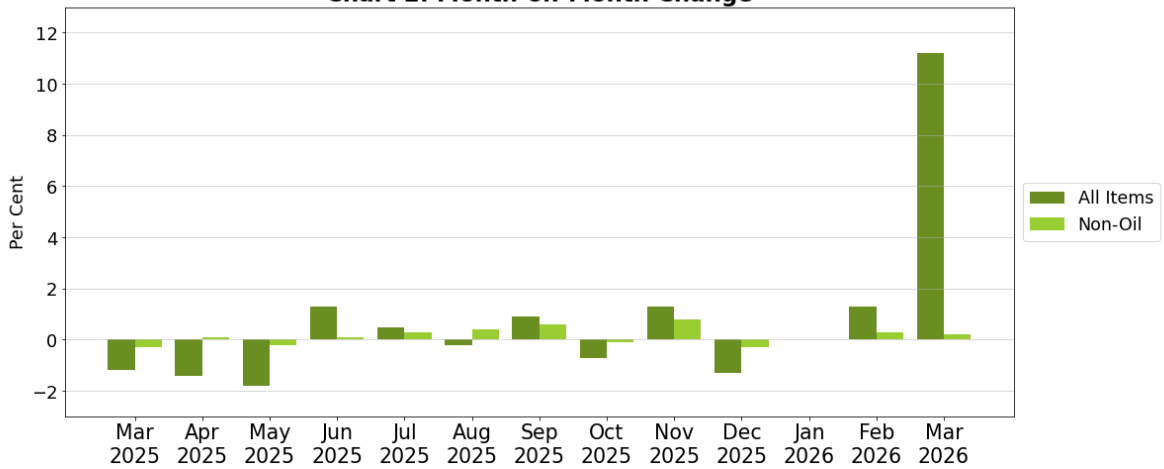
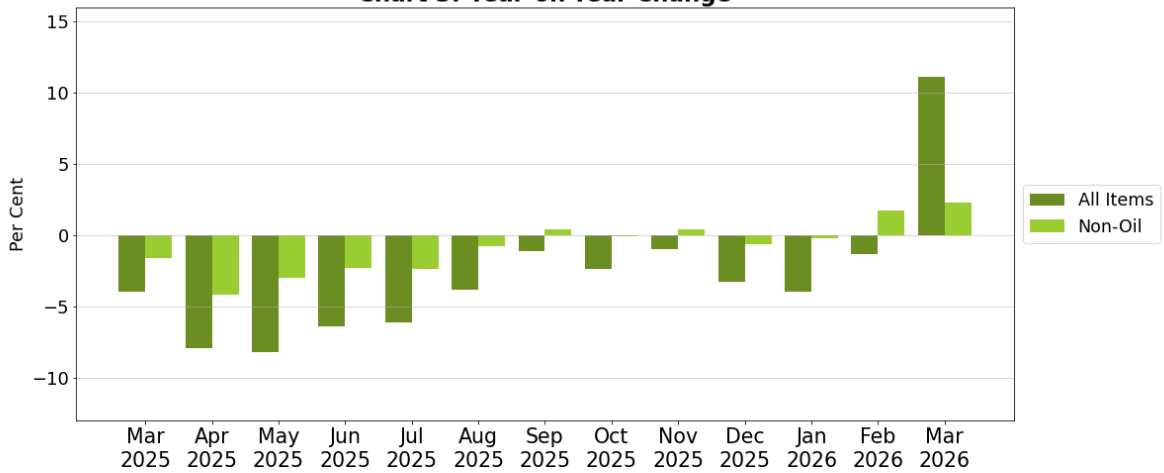


Chart 3: Year-on-Year Change



Export Price Index (2023 = 100) March 2026

Chart 4: Index

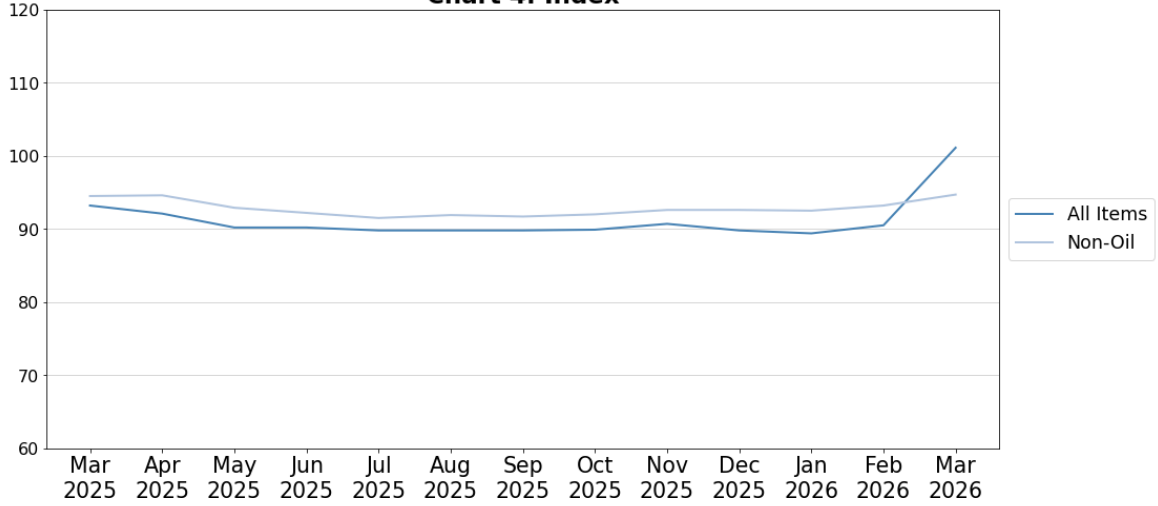


Chart 5: Month-on-Month Change

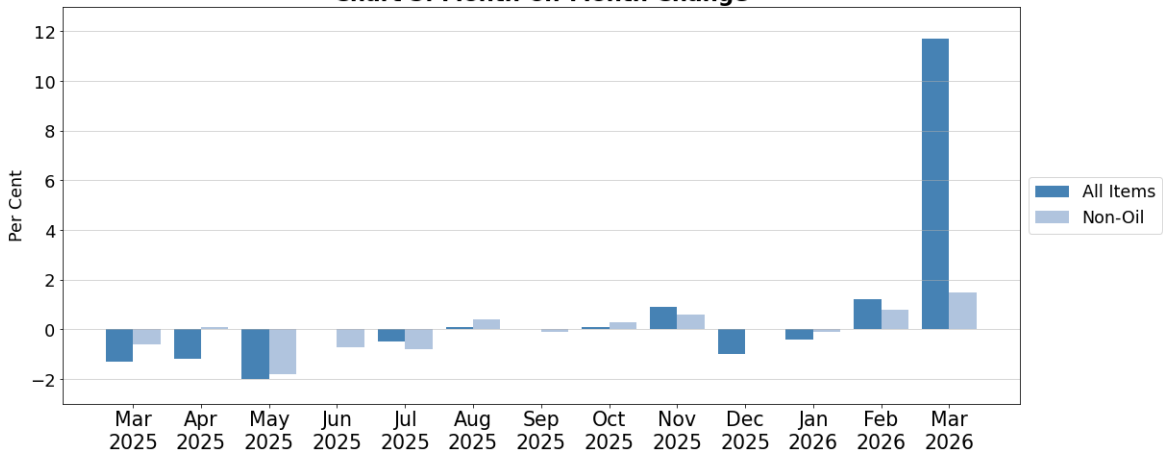


Chart 6: Year-on-Year Change

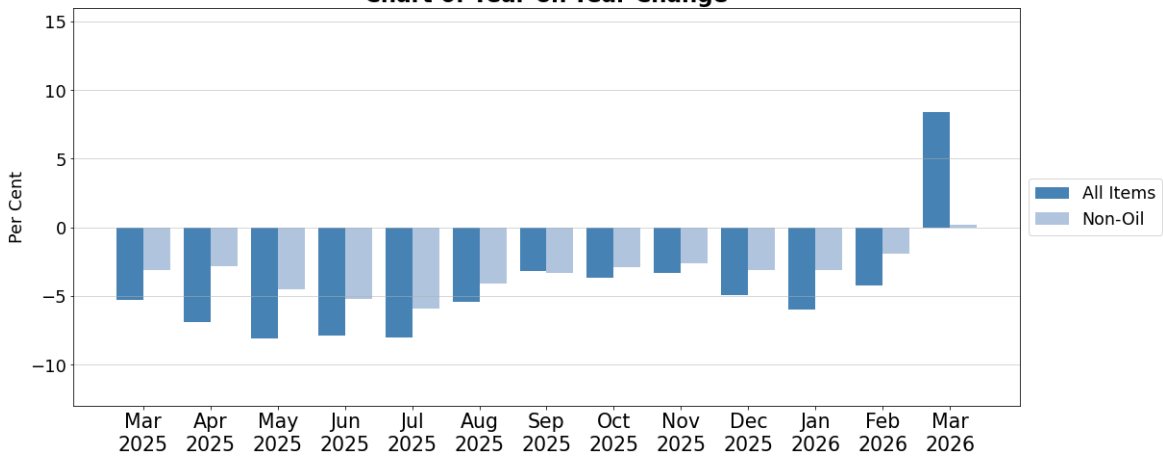


Table 1 Import Price Index

March 2026

Commodity section / division	Weights	Index (2023=100)			% Change		
		Jan 2026	Feb 2026	Mar 2026	Feb 2026	Mar 2026	Mar 2026
					Jan 2026	Feb 2026	Mar 2025
All Items	10,000	91.5	92.7	103.0	1.3	11.2	11.1
Non-oil Items	7,703	94.9	95.2	95.4	0.3	0.2	2.3
Food & Live Animals	254	104.7	104.3	103.6	-0.3	-0.6	-5.8
Live animals	7	88.1	92.1	86.0	4.5	-6.6	-3.3
Meat & meat preparations	35	106.7	106.7	107.0	-	0.3	1.8
Dairy products & birds' eggs	30	96.1	96.1	95.7	0.1	-0.5	-2.6
Fish seafood & preparations	31	100.2	99.1	99.6	-1.1	0.5	-1.2
Cereals & cereal preparations	26	97.2	97.1	97.0	-0.1	-	-1.2
Vegetables & fruit	46	94.5	94.9	95.2	0.5	0.3	-5.2
Sugar, sugar preparations & honey	10	85.2	83.9	83.8	-1.6	-0.1	-12.9
Coffee, tea, cocoa, spices & manufactures	28	143.9	147.3	143.5	2.4	-2.5	-13.6
Animal feeding stuff (excl unmilled cereals)	6	97.6	97.6	95.4	-	-2.3	-9.8
Miscellaneous food preparations	35	111.6	106.3	105.5	-4.7	-0.8	-11.0
Beverages & Tobacco	110	100.4	99.7	99.1	-0.8	-0.6	-1.4
Beverages	94	98.2	97.9	97.1	-0.3	-0.8	-2.4
Tobacco & manufactures	16	113.7	110.4	110.8	-2.9	0.4	4.7
Crude Materials (excl fuels)	58	104.0	108.4	110.0	4.3	1.4	12.2
Hides Skins & Furskins	1	100.0	100.0	100.0	-	-	-
Oil seeds & oleaginous fruits	1	93.4	93.0	93.6	-0.5	0.7	0.4
Crude rubber	6	90.3	89.3	90.0	-1.1	0.7	-6.4
Cork & wood	2	96.2	94.7	93.9	-1.6	-0.9	0.9
Textile Fibres	3	89.6	85.1	77.0	-5.0	-9.5	-25.1
Crude fertilizers & minerals	20	112.8	113.5	115.6	0.7	1.8	3.9
Metalliferous ores & metal scrap	16	99.3	115.9	119.0	16.7	2.7	46.5
Crude animal & vegetable materials nes	9	111.0	110.9	113.2	-0.1	2.1	12.6
Mineral Fuels, Lubricants & Related Materials	2,297	80.1	84.3	128.7	5.2	52.6	41.5
Petroleum & products & related materials	2,143	80.5	84.6	131.2	5.1	55.1	44.7
Gas	155	75.0	80.4	93.7	7.3	16.5	-0.5
Animal & Vegetable Oils, Fats & Waxes	70	91.5	92.1	90.4	0.7	-1.8	-1.0
Fixed vegetable fats & oils	15	97.4	97.4	99.5	-0.1	2.2	-3.5
Inedible Mixtures Of Animal Or Vegetable Fats Or Oils	54	89.8	90.6	87.9	0.9	-3.0	-0.2
Chemicals & Chemical Products	874	91.7	91.5	92.0	-0.2	0.5	-4.1
Organic chemicals	297	86.9	87.6	89.2	0.8	1.8	-2.4
Inorganic chemicals	36	107.7	110.0	108.7	2.1	-1.2	8.2
Dyeing, tanning & colouring materials	23	90.0	90.0	90.5	-0.1	0.6	-4.5
Medicinal & pharmaceutical products	133	95.9	96.2	94.8	0.3	-1.5	-7.8
Essential oils & perfume; toilet cleaning products	143	99.5	99.5	99.5	-0.1	-	-0.4
Plastics in primary forms	99	82.0	78.1	78.8	-4.7	0.8	-12.5
Plastics in non-primary forms	31	93.9	93.9	94.2	-	0.4	-2.0
Chemical materials & products nes	111	92.7	91.5	92.3	-1.3	0.9	-6.6
Manufactured Goods	512	98.4	98.0	98.9	-0.4	0.9	3.4
Leather Manufactures & Dressed Furskins	1	113.6	111.8	110.3	-1.6	-1.4	5.1
Rubber manufactures nes	22	93.5	93.6	94.1	0.1	0.5	-1.6
Cork & Wood Manufactures	10	90.7	90.0	87.6	-0.7	-2.7	-6.0
Paper manufactures	36	92.1	91.8	93.1	-0.3	1.4	-2.0
Textile manufactures	21	95.1	95.7	96.3	0.7	0.6	-0.6
Non-metal mineral manufactures nes	70	96.2	96.2	96.5	-	0.4	-2.0
Iron & steel	113	86.0	85.7	86.5	-0.4	1.0	-3.4
Non-ferrous metals	105	120.0	119.7	121.2	-0.3	1.3	25.2
Manufactures of metals nes	133	96.5	95.5	96.4	-1.0	0.9	-2.1
Machinery & Transport Equipment	4,954	91.1	91.4	91.4	0.3	-	2.4
Power-generating machinery & equipment	644	110.9	110.4	109.9	-0.4	-0.4	5.6
Machinery specialized for particular industries	324	90.2	89.9	90.3	-0.2	0.5	-6.6
Metal working machinery	15	100.1	100.5	95.7	0.4	-4.8	1.1
General industrial machinery	308	98.8	97.9	98.2	-0.9	0.3	0.4
Office machines & data-processing machines	368	89.7	90.6	91.4	1.0	0.8	-4.6
Telecommunication apparatus	412	99.0	101.1	102.1	2.1	1.0	3.6
Electrical machinery apparatus nes, electrical parts	2,765	84.0	84.3	84.2	0.3	-0.1	4.0
Road vehicles	117	107.4	107.2	105.2	-0.2	-1.8	-0.3
Miscellaneous Manufactured Articles	872	113.7	115.0	116.0	1.1	0.9	9.3
Prefab building, sanitary plumbing, lighting nes	12	89.4	88.7	89.6	-0.8	1.1	-2.6
Furniture, bedding, mattresses, cushions & others	26	105.2	105.8	105.9	0.6	0.1	4.6
Travel goods, handbags & similar containers	66	115.3	115.3	115.4	-	0.1	4.9
Articles of apparel & clothing accessories	63	88.0	87.9	88.9	-0.1	1.2	-3.0
Footwear	25	104.8	103.3	102.1	-1.4	-1.2	-1.6
Professional scientific & controlling instruments	256	88.0	87.7	87.8	-0.3	0.2	-6.1
Photographic & optical goods nes; watches & clocks	104	106.6	107.1	107.0	0.5	-0.1	3.9
Miscellaneous manufactured articles nes	319	143.9	147.6	150.0	2.6	1.6	24.4

Figures may not sum to total due to rounding.

Table 2 Export Price Index

March 2026

Commodity section / division	Weights	Index (2023=100)			% Change		
		Jan 2026	Feb 2026	Mar 2026	Feb 2026	Mar 2026	Mar 2026
					Jan 2026	Feb 2026	Mar 2025
All Items	10,000	89.4	90.5	101.1	1.2	11.7	8.4
Non-oil Items	8,026	92.5	93.2	94.7	0.8	1.5	0.2
Food & Live Animals	214	101.2	99.5	99.5	-1.7	0.1	-6.8
Dairy products & birds' eggs	5	113.3	113.3	113.1	-	-0.2	4.2
Fish seafood & preparations	6	101.0	100.4	100.8	-0.5	0.4	2.1
Cereals & cereal preparations	8	91.9	91.8	91.4	-	-0.5	-2.8
Vegetables & fruit	5	111.3	110.9	110.7	-0.3	-0.2	-12.4
Sugar, sugar preparations & honey	3	83.8	82.8	81.0	-1.2	-2.2	-16.3
Coffee, tea, cocoa, spices & manufactures	25	129.0	124.7	117.1	-3.3	-6.1	-23.2
Animal feeding stuff (excl unmilled cereals)	7	83.3	83.2	82.9	-0.1	-0.4	-16.0
Miscellaneous food preparations	154	97.4	95.8	97.2	-1.7	1.5	-2.9
Beverages & Tobacco	90	92.3	92.7	92.5	0.5	-0.2	-8.8
Beverages	77	91.4	92.0	91.7	0.7	-0.4	-10.3
Tobacco & manufactures	14	97.1	96.4	96.8	-0.7	0.4	0.4
Crude Materials (excl fuels)	62	98.1	94.8	96.3	-3.3	1.5	2.1
Crude rubber	21	90.2	88.5	89.4	-1.9	1.1	-11.7
Pulp and waste paper	9	97.7	97.3	97.9	-0.4	0.6	1.7
Metalliferous ores & metal scrap	30	102.6	97.0	99.2	-5.5	2.3	13.6
Crude animal & vegetable materials nes	3	108.3	109.0	109.1	0.6	0.1	1.0
Mineral Fuels, Lubricants & Related Materials	1,974	76.8	79.4	127.1	3.4	60.1	44.5
Petroleum & products & related materials	1,974	76.8	79.4	127.1	3.4	60.1	44.5
Animal & Vegetable Oils, Fats & Waxes	5	116.5	115.2	115.8	-1.0	0.5	-1.4
Fixed vegetable fats & oils	4	103.7	102.6	104.2	-1.1	1.6	-3.9
Inedible Mixtures Of Animal Or Vegetable Fats Or Oils	2	141.4	140.0	138.5	-1.0	-1.1	2.6
Chemicals & Chemical Products	1,297	84.8	85.5	88.8	0.9	3.8	-0.5
Organic chemicals	339	75.0	76.3	85.1	1.7	11.5	4.1
Inorganic chemicals	14	113.4	109.8	109.3	-3.1	-0.4	18.5
Dyeing, tanning & colouring materials	25	90.3	90.6	91.3	0.3	0.8	-7.8
Medicinal & pharmaceutical products	296	91.0	93.6	97.0	2.9	3.7	14.5
Essential oils & perfume; toilet cleaning products	233	88.0	87.5	85.9	-0.6	-1.8	-7.7
Plastics in primary forms	232	83.6	83.5	85.7	-	2.6	-10.8
Plastics in non-primary forms	24	99.8	99.2	99.6	-0.6	0.4	-1.2
Chemical materials & products nes	133	85.2	84.8	85.6	-0.6	1.0	-9.6
Manufactured Goods	277	98.3	97.0	97.3	-1.2	0.3	-0.5
Leather Manufactures & Dressed Furskins	3	80.5	81.1	77.6	0.7	-4.3	-21.7
Rubber manufactures nes	20	100.2	99.8	99.9	-0.4	0.2	-2.7
Paper manufactures	35	95.3	95.6	95.8	0.4	0.2	-1.8
Textile manufactures	14	94.4	94.0	92.7	-0.5	-1.4	-5.1
Non-metal mineral manufactures nes	18	97.0	94.9	96.7	-2.1	1.9	-3.4
Iron & steel	56	75.9	76.3	75.8	0.5	-0.7	-5.6
Non-ferrous metals	59	127.2	123.0	124.2	-3.3	1.0	10.9
Manufactures of metals nes	73	94.3	93.4	93.7	-1.0	0.4	-4.2
Machinery & Transport Equipment	5,185	91.4	92.3	93.6	1.0	1.4	0.1
Power-generating machinery & equipment	461	105.0	107.9	108.7	2.8	0.7	2.0
Machinery specialized for particular industries	650	109.8	110.8	110.5	0.8	-0.2	0.7
Metal working machinery	17	107.4	107.0	108.4	-0.4	1.3	5.5
General industrial machinery	207	85.7	84.5	84.3	-1.4	-0.3	-7.2
Office machines & data-processing machines	343	91.3	92.2	94.1	1.0	2.1	-0.1
Telecommunication apparatus	426	83.8	83.6	84.4	-0.3	1.0	-3.6
Electrical machinery apparatus nes, electrical parts	3,007	86.4	87.4	89.2	1.1	2.1	0.5
Road vehicles	73	102.7	102.6	102.7	-0.1	0.1	0.2
Miscellaneous Manufactured Articles	895	105.9	107.1	107.4	1.1	0.3	4.1
Prefab building, sanitary plumbing, lighting nes	3	80.5	80.4	79.9	-	-0.7	-1.3
Furniture, bedding, mattresses, cushions & others	6	104.1	106.7	106.7	2.5	-	2.5
Travel goods, handbags & similar containers	41	102.5	102.9	103.0	0.4	0.1	3.5
Articles of apparel & clothing accessories	32	111.5	112.0	114.1	0.5	1.9	10.2
Footwear	18	85.1	91.0	92.5	6.9	1.6	-3.8
Professional scientific & controlling instruments	400	90.7	90.0	89.7	-0.7	-0.3	-7.5
Photographic & optical goods nes; watches & clocks	85	102.1	102.0	101.9	-0.1	-0.1	-0.8
Miscellaneous manufactured articles nes	310	128.0	131.7	132.7	2.9	0.8	18.3

Figures may not sum to total due to rounding.

Table 3 Import Price Index

Section	All Items	Non-oil Items	Food & Live Animals	Beverages & Tobacco	Crude Materials	Mineral Fuels	Animal & Vegetable Oils, Fats & Waxes	Chemicals & Chemical Products	Manufactured Goods	Machinery & Transport Equipment	Misc. Manufactured Articles
Weights	10,000	7,703	254	110	58	2,297	70	874	512	4,954	872
Index (2023=100)											
2022	105.9	100.6	99.7	89.5	97.9	119.5	126.4	103.1	104.6	100.1	99.3
2023	100.0	100.0	100.0	100.0	100.0	100.0	100.0	100.0	100.0	100.0	100.0
2024	96.1	95.6	103.0	97.3	95.7	97.6	92.3	97.5	96.1	93.9	101.5
2025	92.1	94.0	106.8	101.4	98.0	85.6	91.9	94.1	95.0	90.6	108.0
2025											
Mar	92.7	93.3	110.0	100.5	98.1	90.9	91.3	95.9	95.6	89.3	106.2
Apr	91.5	93.4	109.5	101.9	97.8	85.1	92.4	95.4	95.3	89.3	107.5
May	89.8	93.2	107.9	101.0	97.9	78.6	92.3	94.0	94.1	89.5	107.4
Jun	91.0	93.3	106.1	101.4	99.9	83.6	91.3	93.3	93.8	89.9	107.1
Jul	91.5	93.5	105.2	101.9	97.8	84.7	90.1	92.7	93.5	90.5	107.0
Aug	91.3	93.9	105.1	101.8	97.0	82.7	90.5	92.6	94.0	91.1	106.9
Sep	92.1	94.5	105.4	102.2	99.4	84.2	91.5	92.5	94.3	91.6	108.4
Oct	91.5	94.4	105.6	102.7	98.4	81.7	92.3	93.1	95.3	90.8	111.2
Nov	92.7	95.2	105.6	102.8	99.7	84.3	93.0	93.3	95.5	91.9	111.3
Dec	91.5	94.9	105.5	102.9	102.0	80.1	93.1	93.0	96.2	91.3	112.4
2026											
Jan	91.5	94.9	104.7	100.4	104.0	80.1	91.5	91.7	98.4	91.1	113.7
Feb	92.7	95.2	104.3	99.7	108.4	84.3	92.1	91.5	98.0	91.4	115.0
Mar	103.0	95.4	103.6	99.1	110.0	128.7	90.4	92.0	98.9	91.4	116.0
Percentage Change over same period of previous year (%)											
2023	-5.6	-0.6	0.3	11.7	2.1	-16.3	-20.9	-3.0	-4.4	-0.1	0.7
2024	-3.9	-4.4	3.0	-2.7	-4.3	-2.4	-7.7	-2.5	-3.9	-6.1	1.5
2025	-4.2	-1.7	3.7	4.3	2.3	-12.3	-0.4	-3.5	-1.2	-3.5	6.4
2025											
Mar	-4.0	-1.6	9.0	2.8	0.1	-11.3	6.4	-1.6	-0.5	-4.0	6.2
Apr	-7.9	-4.2	7.4	4.2	2.5	-19.2	-2.8	-3.2	-1.8	-7.4	5.7
May	-8.2	-3.0	5.2	2.9	-0.8	-24.4	-6.3	-4.6	-3.2	-4.9	5.5
Jun	-6.4	-2.3	3.3	3.2	4.6	-19.0	-7.4	-5.8	-3.6	-3.5	5.6
Jul	-6.1	-2.4	1.7	3.8	4.5	-17.7	4.5	-5.7	-3.4	-3.6	4.9
Aug	-3.8	-0.8	1.4	4.9	-0.6	-13.7	5.4	-4.2	-1.3	-1.6	5.2
Sep	-1.1	0.4	2.1	5.7	6.5	-6.4	2.1	-3.2	-	-0.4	6.7
Oct	-2.4	-0.1	1.4	6.4	3.2	-10.5	-0.2	-2.8	0.9	-1.7	8.4
Nov	-1.0	0.4	0.7	6.7	6.1	-6.0	6.6	-3.3	0.3	-0.6	8.0
Dec	-3.3	-0.6	-0.5	7.6	9.6	-12.4	0.7	-4.1	0.5	-2.2	8.3
2026											
Jan	-4.0	-0.2	-2.9	1.1	9.1	-16.9	-2.8	-5.6	2.4	-1.1	8.7
Feb	-1.3	1.7	-3.6	0.7	17.4	-11.0	0.8	-4.6	2.2	1.5	8.9
Mar	11.1	2.3	-5.8	-1.4	12.2	41.5	-1.0	-4.1	3.4	2.4	9.3

Table 4 Export Price Index

Section	All Items	Non-oil Items	Food & Live Animals	Beverages & Tobacco	Crude Materials	Mineral Fuels	Animal & Vegetable Oils, Fats & Waxes	Chemicals & Chemical Products	Manufactured Goods	Machinery & Transport Equipment	Misc. Manufactured Articles
Weights	10,000	8,026	214	90	62	1,974	5	1,297	277	5,185	895
Index (2023=100)											
2022	108.2	105.0	102.9	95.0	113.6	119.3	114.8	108.6	103.5	104.4	103.5
2023	100.0	100.0	100.0	100.0	100.0	100.0	100.0	100.0	100.0	100.0	100.0
2024	96.3	96.5	101.8	99.3	98.2	95.4	101.2	92.7	96.6	96.4	100.7
2025	91.3	93.1	104.6	98.3	94.2	83.8	117.0	87.5	95.7	92.0	103.0
2025											
Mar	93.2	94.5	106.8	101.4	94.3	87.9	117.4	89.2	97.8	93.6	103.1
Apr	92.1	94.6	105.6	98.3	95.6	81.7	118.3	89.5	96.9	93.8	102.9
May	90.2	92.9	104.5	97.6	94.0	79.3	116.1	87.3	95.4	92.0	102.2
Jun	90.2	92.2	104.9	96.6	94.4	82.0	113.9	86.3	95.5	91.2	101.8
Jul	89.8	91.5	104.7	97.4	92.6	82.9	116.3	86.2	93.9	90.2	101.7
Aug	89.8	91.9	105.0	96.8	93.7	81.5	118.9	86.4	94.1	90.7	102.1
Sep	89.8	91.7	103.2	95.9	92.0	82.0	117.7	86.6	94.3	90.3	103.2
Oct	89.9	92.0	103.5	98.7	93.4	81.3	118.8	86.1	95.2	90.6	104.5
Nov	90.7	92.6	103.2	98.1	95.9	83.0	117.8	86.3	95.3	91.4	104.0
Dec	89.8	92.6	102.5	96.9	95.5	78.4	118.6	85.4	95.6	91.5	105.0
2026											
Jan	89.4	92.5	101.2	92.3	98.1	76.8	116.5	84.8	98.3	91.4	105.9
Feb	90.5	93.2	99.5	92.7	94.8	79.4	115.2	85.5	97.0	92.3	107.1
Mar	101.1	94.7	99.5	92.5	96.3	127.1	115.8	88.8	97.3	93.6	107.4
Percentage Change over same period of previous year (%)											
2023	-7.6	-4.7	-2.8	5.3	-12.0	-16.2	-12.9	-7.9	-3.4	-4.2	-3.4
2024	-3.7	-3.5	1.8	-0.7	-1.8	-4.6	1.2	-7.3	-3.4	-3.6	0.7
2025	-5.2	-3.5	2.7	-1.0	-4.1	-12.1	15.6	-5.6	-0.9	-4.6	2.3
2025											
Mar	-5.3	-3.1	6.3	3.4	-5.1	-13.7	16.0	-5.5	2.4	-4.5	3.7
Apr	-6.9	-2.8	5.1	-3.0	-2.9	-22.2	16.0	-5.1	0.5	-3.7	2.5
May	-8.1	-4.5	3.1	-3.6	-8.8	-22.1	15.0	-7.8	-1.5	-5.3	2.0
Jun	-7.9	-5.2	3.3	-2.0	-7.4	-18.6	13.4	-8.0	-2.0	-6.3	1.4
Jul	-8.0	-5.9	2.0	-3.3	-6.2	-16.6	14.5	-8.2	-4.7	-7.0	0.9
Aug	-5.4	-4.1	3.2	-1.2	-6.8	-10.7	18.2	-5.8	-2.5	-5.3	2.5
Sep	-3.2	-3.3	1.9	-1.7	-4.6	-2.9	17.7	-4.4	-1.2	-4.4	2.5
Oct	-3.7	-2.9	0.3	-1.6	-2.2	-7.1	22.1	-3.9	-1.0	-4.1	3.2
Nov	-3.3	-2.6	-1.4	-0.2	2.7	-6.4	15.6	-3.2	-1.9	-3.4	1.7
Dec	-4.9	-3.1	-2.1	3.0	2.0	-12.3	11.8	-5.1	-1.9	-3.9	1.6
2026											
Jan	-6.0	-3.1	-3.9	-8.3	2.6	-18.2	-1.4	-6.0	1.4	-3.7	3.1
Feb	-4.2	-1.9	-6.3	-8.7	1.1	-13.8	2.9	-5.2	-0.3	-2.1	4.3
Mar	8.4	0.2	-6.8	-8.8	2.1	44.5	-1.4	-0.5	-0.5	0.1	4.1

NOTATIONS

- nes not elsewhere specified
- nil or negligible

NOTES

The Import and Export Price Indices report contains statistics that are the most recent available at the time of its preparation.

Some statistics, particularly those for the most recent time periods, are provisional and may be subject to revision in later issues.

Catalogue of Products



[Latest Data using the SingStat Table Builder](#)



[Producer Price Indices Methodology](#)



[Visualising Data: Dashboards, Infographics](#)



[Video: What is the Producer Price Index \(PPI\)?](#)



[Import & Export Price Indices Report](#)



[More Info Related to PPI](#)



Singapore Department of Statistics
29 Apr 2026

Find us on:



SINGAPORE DEPARTMENT OF STATISTICS COMMUNICATIONS & INFORMATION SERVICES

The Singapore Department of Statistics (DOS) offers official statistics, data insights, visualisations, and statistical resources through user-friendly platforms.



SingStat Website

Visit this convenient gateway to access latest data and statistical information.

Data across the six major themes of Economy & Prices, Industry, Trade & Investment, Population, Households, and Society covering some 200 topics such as Gross Domestic Product, Consumer Price Index, Retail Sales and Food & Beverage Services Indices, Producer Price Indices, Business Expectations, Business Receipts Index, Trade in Services, Direct Investment, Population Indicators, Household Income, Household Expenditure, Deaths and Life Expectancy, Births and Fertility, Marriages and Divorces, and more.



Publications

- **Statistics Singapore Newsletter** - features articles on latest key statistical activities, recent survey findings, and methodological improvements.
- **Information Papers** - highlight conceptual and methodological changes and improvements in official statistics.
- **Occasional Papers** - present statistical trends and observations on important social and economic issues to stimulate discussion and research.
- **Singapore in Figures** - allows exploration of key economic and socio-demographic statistics through interactive dashboards.

Visualisations such as infographics and interactive dashboards with latest data, and videos to explain data and statistical concepts.

Businesses Insights Tool for Enterprises (BITE) serves businesses with bite-sized data for big decisions, giving firms insights on their customers, industries, and business performance.

Advance Release Calendar with dates of upcoming data and publication releases in the next twelve months.



SingStat Table Builder

Access some 2,400 data tables for free across various economic and socio-demographic domains from 70 public sector agencies. Watch the [video](#) to find out how you can easily access and customise data tables.



SANDRA (Statistics AND Data Retrieval A.I. Assistant)

Chat with SANDRA on your data enquiries. Watch the [video](#) to find out how SANDRA can assist you in finding the data you need.



SingStat Express

Subscribe to receive alerts on the latest press releases, occasional/ information papers, and newsletters.



SingStat Mobile App

Download the app for fast and convenient access to commonly used statistics from your mobile devices.

Over 300 charts are available across over 40 data categories for easy access to visualise data trends.



For statistical enquiries, you may reach us at:

✉ email: info@singstat.gov.sg or submit the [Data Request Form](#)

☎ phone: 1800-323 8118* (Local users) or (65) 6332 7738 (Overseas users)

* Calls from mobile telephone lines to 1800 local toll-free number may be subject to mobile airtime charges as imposed by the relevant mobile service provider.

Find us on social media!

@SingStat

@singstat_dos

@SingStatvideo

@sg-department-of-statistics

DEPARTMENT OF
STATISTICS
SINGAPORE

— Empowering You with Trusted Data —