

# CENSUS OF POPULATION 2020

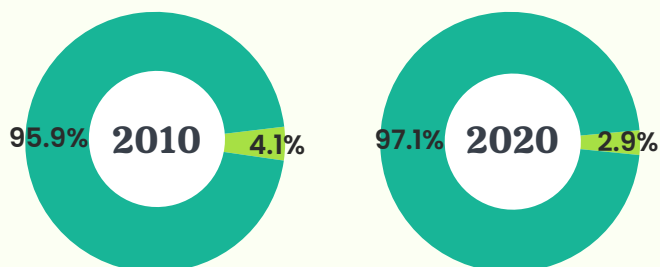
## Literacy & Home Language

Literacy rate remained high and most are literate in more than one language.



### LITERACY RATE

The literacy rate among the resident population aged 15 and over remained high at **97.1 per cent** in 2020.



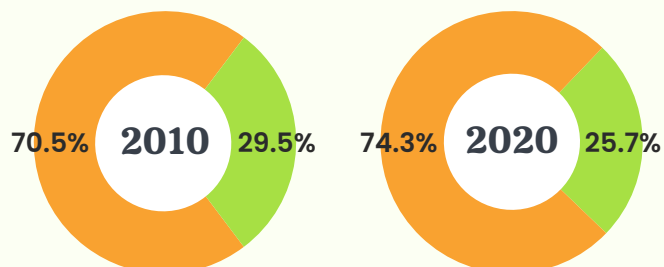
Literate



Not Literate

### MULTI-LANGUAGE LITERACY

Multi-language literacy became more prevalent. Among those who were literate, more could read in two or more languages.



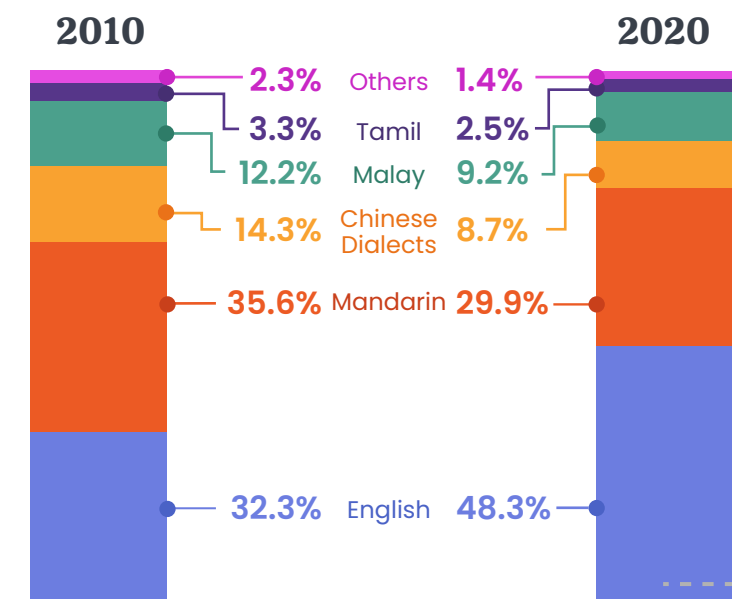
Literate in 2 or more languages



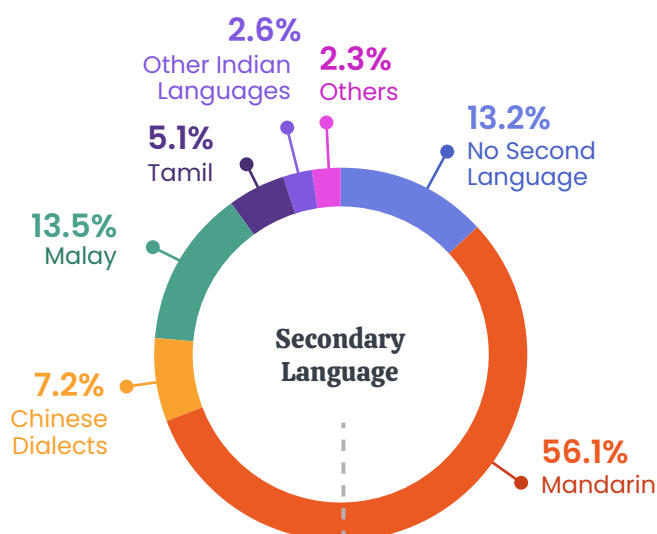
Literate in 1 language

### LANGUAGE MOST/SECOND MOST FREQUENTLY SPOKEN AT HOME

The use of English as the language most frequently spoken at home among resident population aged 5 and over increased to **48.3 per cent** in 2020.



Among those who spoke English most frequently at home, a majority of them also spoke a mother tongue language or dialect as a secondary language.



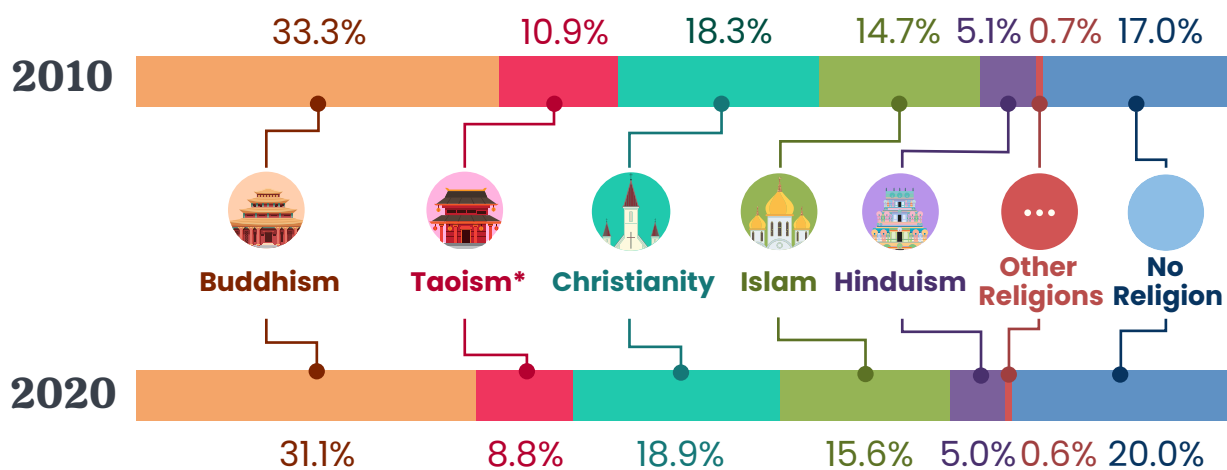
# CENSUS OF POPULATION 2020

## Religion

Singapore remained multi-religious in 2020.



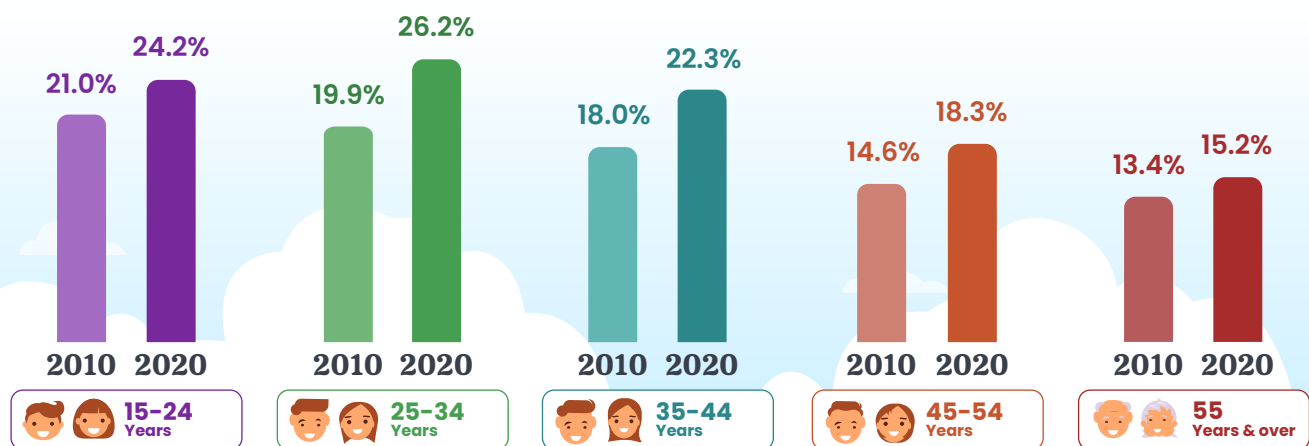
Over the last 10 years, Singapore continued to be religiously diverse.



\*Includes Chinese Traditional Beliefs.

### PROPORTION OF RESIDENTS WITH NO RELIGIOUS AFFILIATION BY AGE GROUP

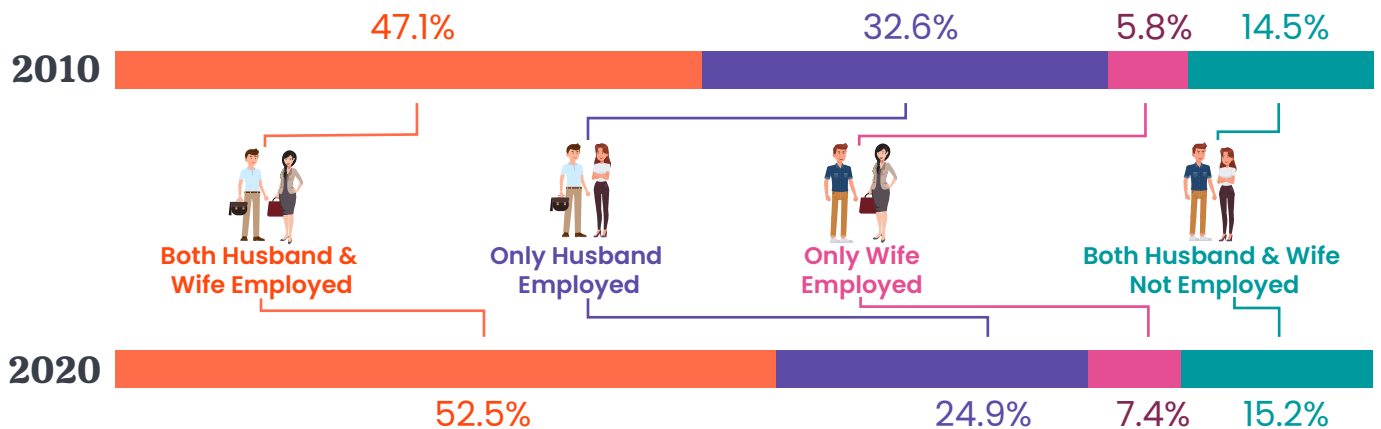
Higher proportion of residents reported no religious affiliation across all age groups.



# CENSUS OF POPULATION 2020

## Married Couples

In 2020, majority of married couples were dual-career couples. The proportion increased over the past 10 years.



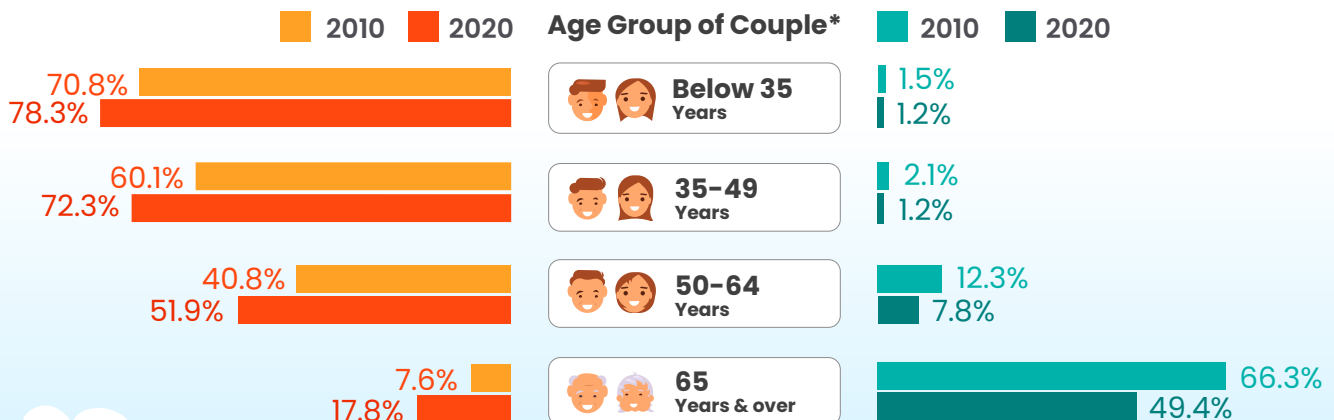
### ACROSS ALL AGE GROUPS,



Proportion of dual-career couples increased.



Proportion of non-employed couples decreased.



\*For married couples where the husband and wife are not in the same age group, it refers to the age group of the older party.

# CENSUS OF POPULATION 2020

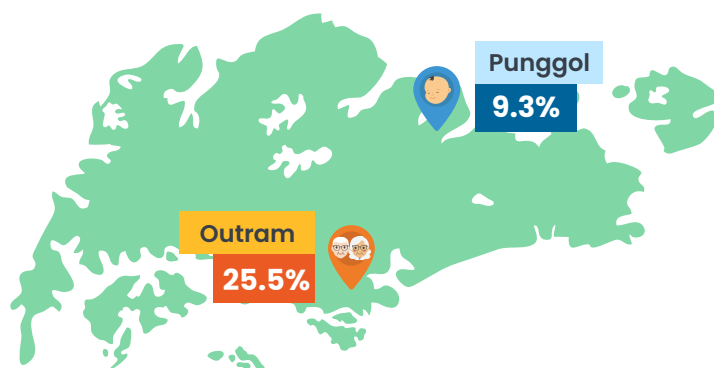
## Geographical Distribution & Transport

With a total population of **5.69 million** in 2020, there was an average of **7,810 persons per square kilometer** in Singapore.



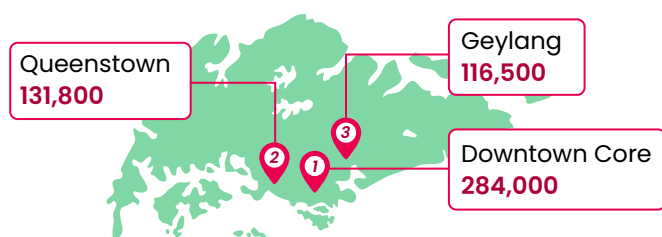
**Outram** had the highest proportion of residents aged 65 years and over.

**Punggol** had the highest proportion of residents aged below 5 years.



### Top 3 Areas Where Residents Work

Among all employed residents aged 15 years and over with a fixed location for work, Downtown Core, Queenstown and Geylang were the top 3 areas where employed residents travelled to for work.

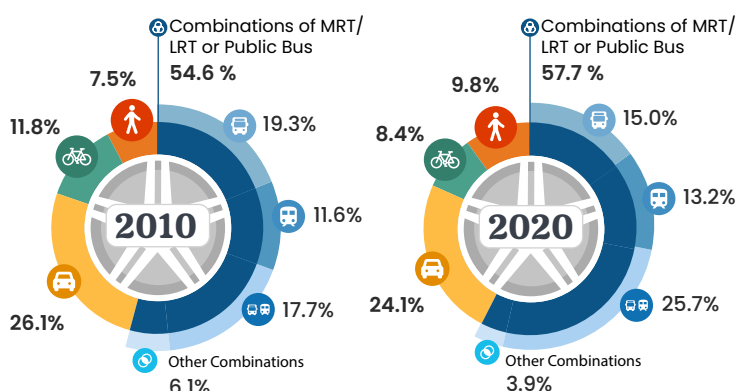


### Main Mode of Transport for Students

	2010	2020
Primary and Below: No Transport Required	46.2%	43.0%
Secondary: Public Bus Only	42.1%	36.9%
Post-Secondary (Non-Tertiary): MRT/LRT & Public Bus Only	29.4%	44.2%
Polytechnic Diploma: MRT/LRT & Public Bus Only	34.6%	49.7%
Professional Qualification and Other Diploma: MRT/LRT & Public Bus Only	38.3%	48.9%
University: MRT/LRT & Public Bus Only	43.7%	51.1%

### Mode of Transport & Median Travelling Time for Employed Residents

The use of combinations of MRT/LRT or public bus to work increased to **57.7%** in 2020.



Median Travelling Time	2010	2020
Combinations of MRT/LRT or Public Bus	45 min	45 min
Public Bus Only	30 min	37 min
MRT/LRT Only	40 min	45 min
MRT/LRT & Public Bus Only	50 min	60 min
Other Combinations	45 min	60 min
Car/Taxi/Private Hire Car Only	30 min	30 min
Other Modes	30 min	30 min
No Transport Required	10 min	8 min

# CENSUS OF POPULATION 2020

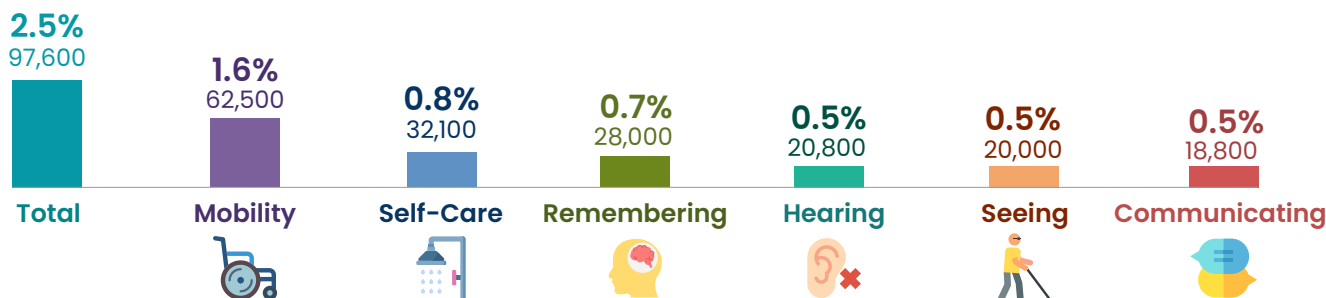
## Difficulty Performing Basic Activities\*

\*Basic activities refer to seeing, hearing, mobility (walking or climbing steps), remembering or concentrating, self-care (washing all over or dressing), and communicating (understanding or being understood).

Data on difficulty performing basic activities were captured for the first time in Census 2020.

### Residents Unable to Perform / with A Lot of Difficulty in At Least One Basic Activity

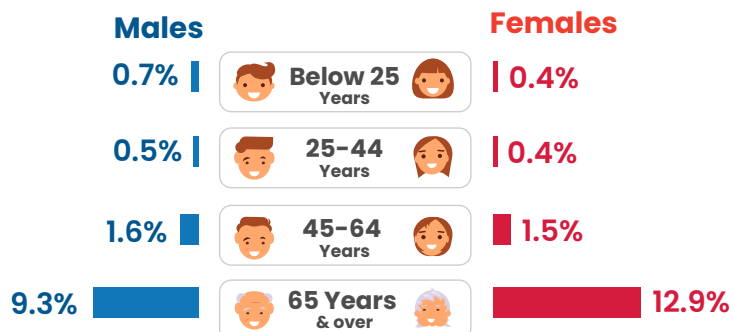
Residents with a lot of difficulty\*\* performing activities relating to mobility constituted the largest group, followed by self-care.



#### By Age and Sex

Elderly faced more difficulty performing basic activities.

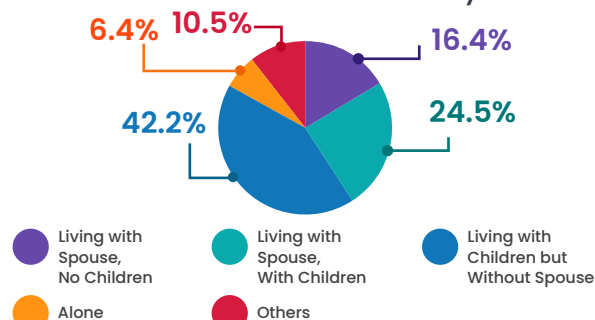
#### Unable to Perform / with A Lot of Difficulty in At Least One Basic Activity



#### By Elderly Living Arrangement #

Majority of elderly with a lot of difficulty\*\* lived with other people.

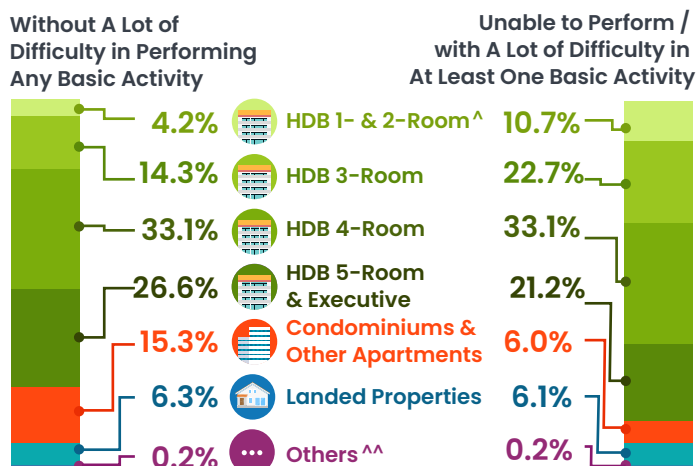
#### Unable to Perform / with A Lot of Difficulty in At Least One Basic Activity



# Resident Population Aged 65 Years and Over in Resident Households.

#### By Dwelling Type

Proportionately more residents with a lot of difficulty\*\* lived in HDB 3-room or smaller flats.



^ Includes HDB studio apartments.

^^ Refers to other types of dwelling not shown e.g. non-HDB shophouses, etc.

\*\* Includes those unable to perform at least one basic activity.

#### By Labour Force Participation Rate

Proportionately fewer residents with a lot of difficulty\*\* were in the labour force.

