

SINGAPORE SERVICES SECTOR* 2020



SERVICES SECTOR AT A GLANCE

OPERATING REVENUE



💰 **S\$3,272 Bil**

OPERATING EXPENDITURE



💰 **S\$3,192 Bil**

OPERATING SURPLUS



💰 **S\$120 Bil**

VALUE ADDED



💰 **S\$231 Bil**

NUMBER OF ESTABLISHMENTS



🏢 **219,415**

* Excludes finance & insurance and public administration activities.

NUMBER OF ESTABLISHMENTS

Total:
219,415

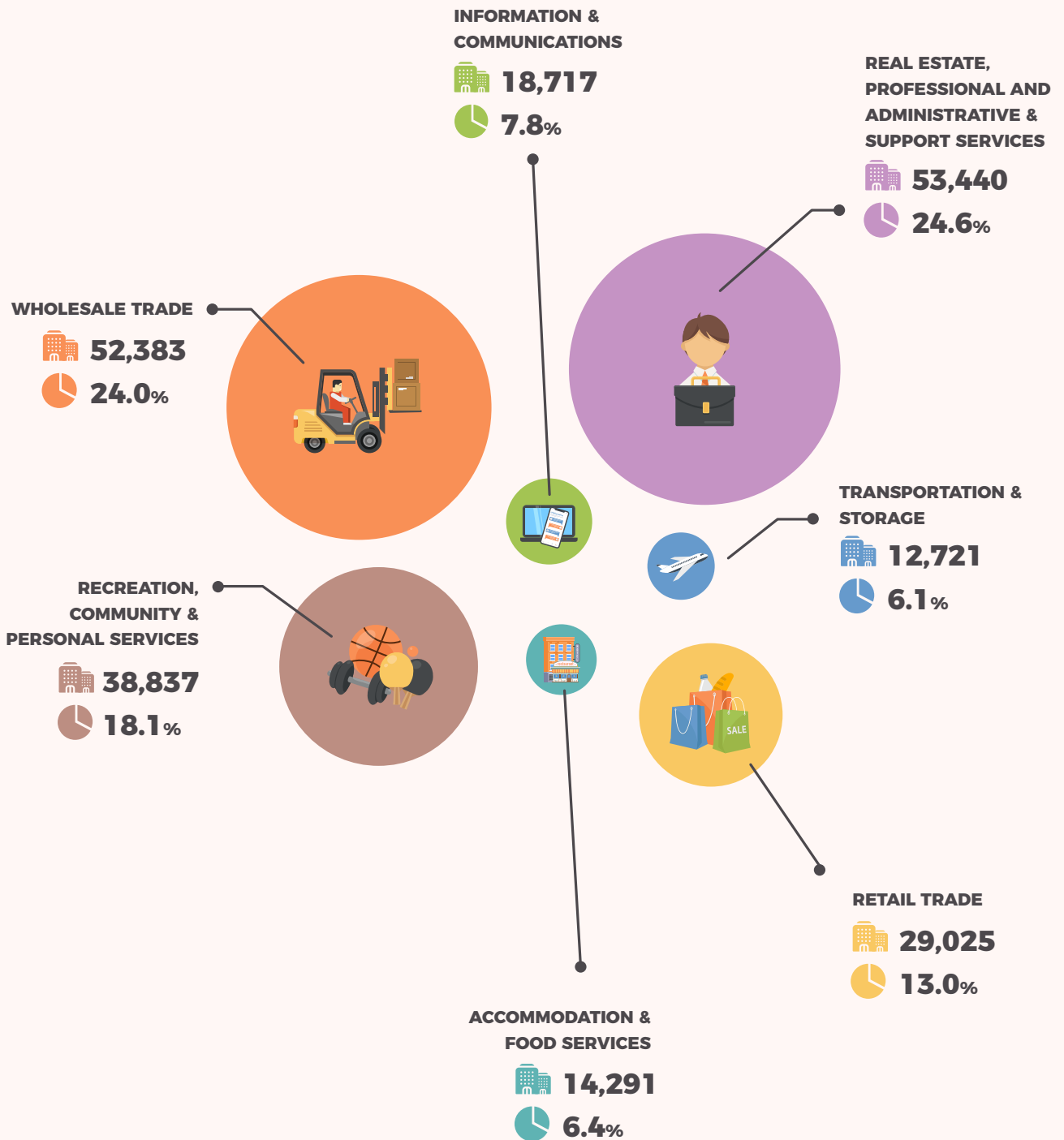
LEGEND



Number of Establishments



Share of Total Establishments





OPERATING REVENUE

Total:
s\$3,272 Bil



WHOLESALE TRADE

YoY

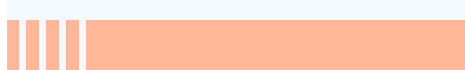
-11.7%

2020

2019



s\$2,767 Bil



s\$3,134 Bil



RETAIL TRADE

-13.1%

2020

2019



s\$42 Bil



s\$48 Bil



TRANSPORTATION & STORAGE

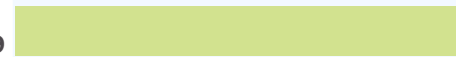
-4.1%

2020

2019



s\$160 Bil



s\$167 Bil



ACCOMMODATION & FOOD SERVICES

-28.4%

2020

2019



s\$14 Bil



s\$19 Bil



INFORMATION & COMMUNICATIONS

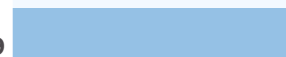
21.1%

2020

2019



s\$129 Bil



s\$106 Bil



REAL ESTATE, PROFESSIONAL AND ADMINISTRATIVE & SUPPORT SERVICES

-16.0%

2020

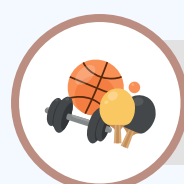
2019



s\$120 Bil



s\$143 Bil



RECREATION, COMMUNITY & PERSONAL SERVICES

-10.6%

2020

2019



s\$41 Bil



s\$45 Bil

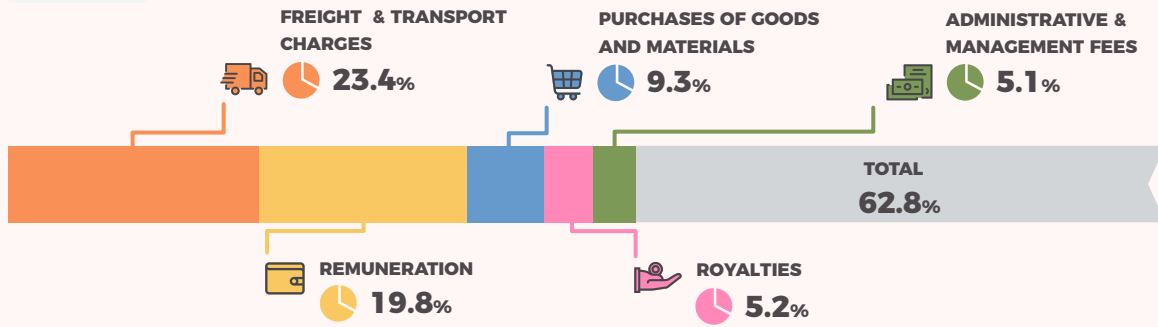


BUSINESS COSTS

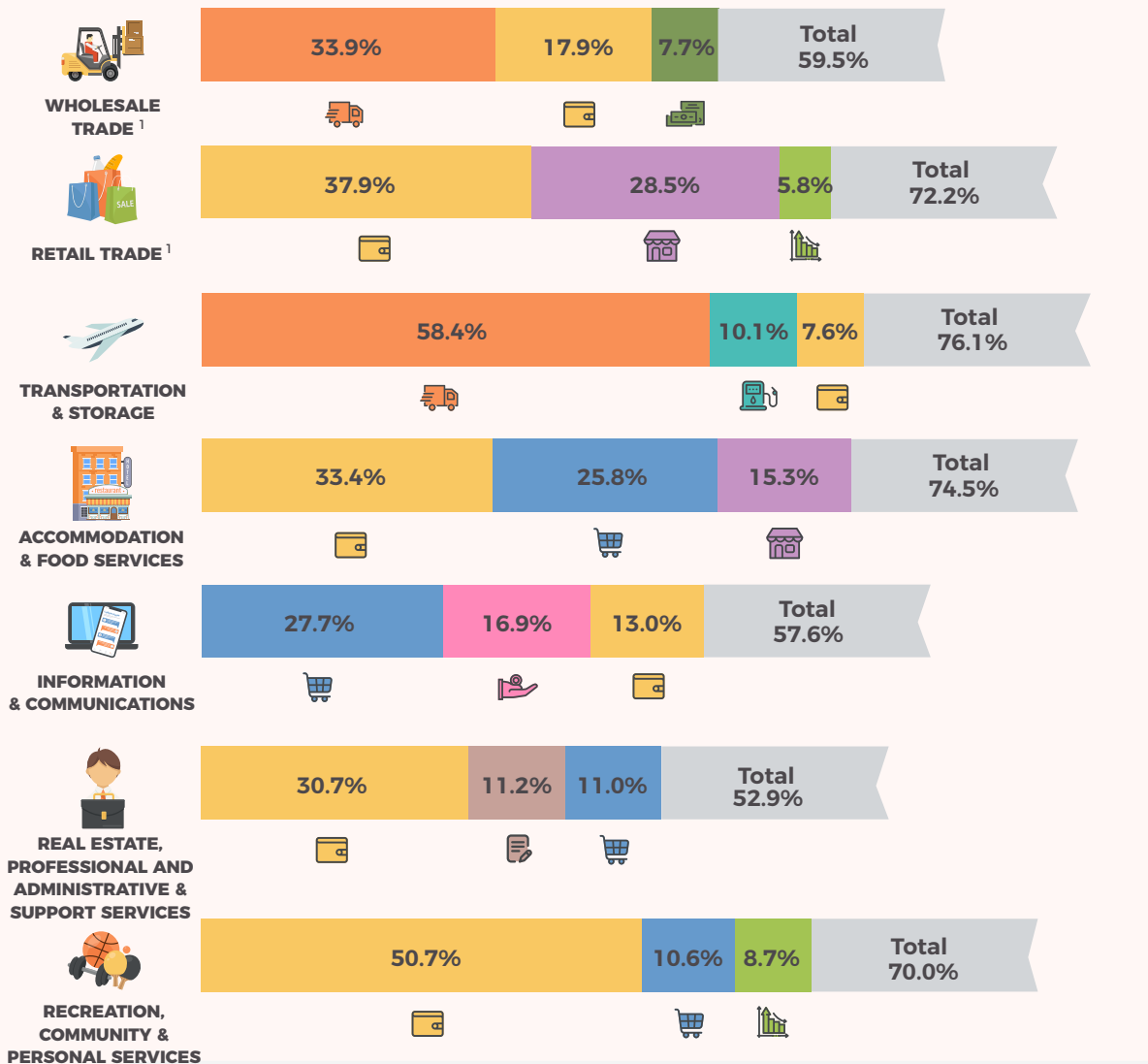
Total:
s\$3,192 Bil

LEGEND

Share of Total Business Costs



TOP 3 BUSINESS COSTS¹ BY INDUSTRY



LEGEND

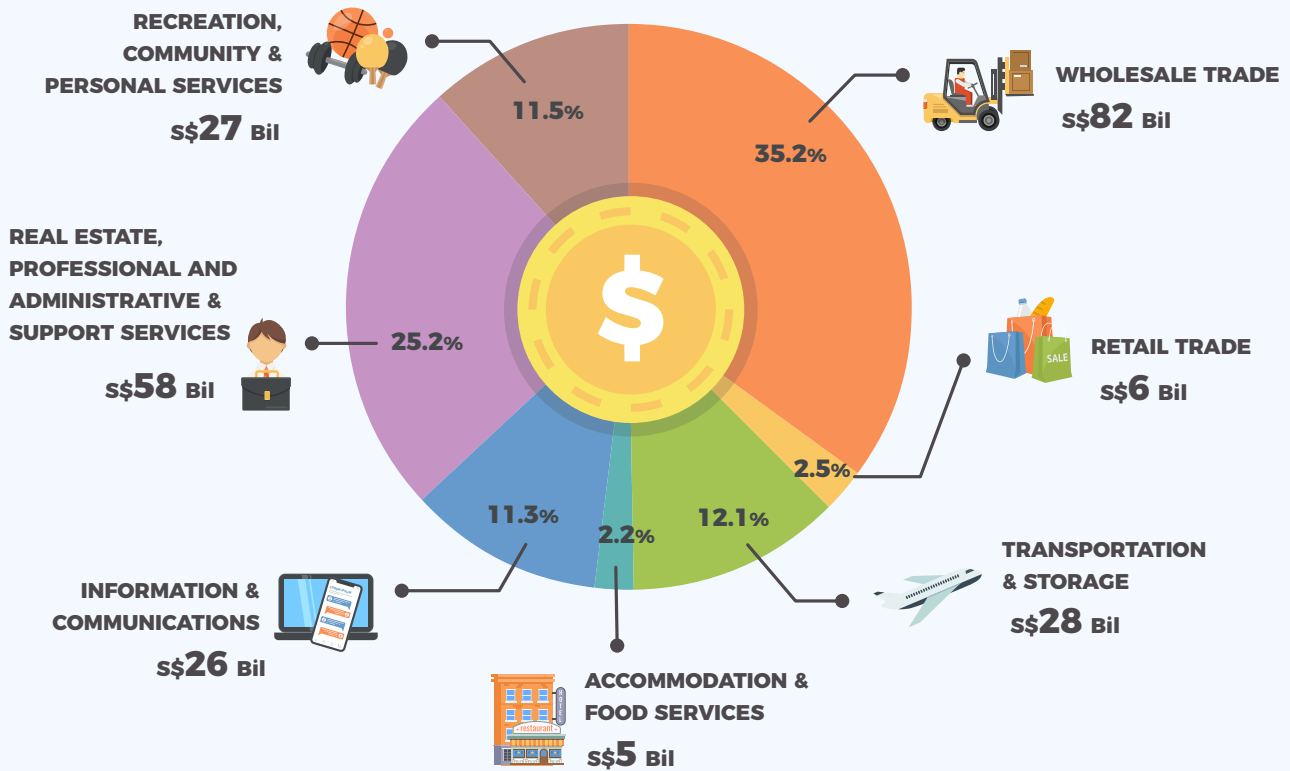
- Freight & Transport Charges
- Purchases of Goods and Materials
- Remuneration
- Renting of Office, Shops & Other Premises
- Royalties
- Advertising & Entertainment
- Administrative & Management Fees
- Fuel
- Depreciation
- Subcontract Charges/ Work Given Out

¹ Operating Expenditure excludes Purchases of Goods & Materials for Wholesale Trade and Retail Trade

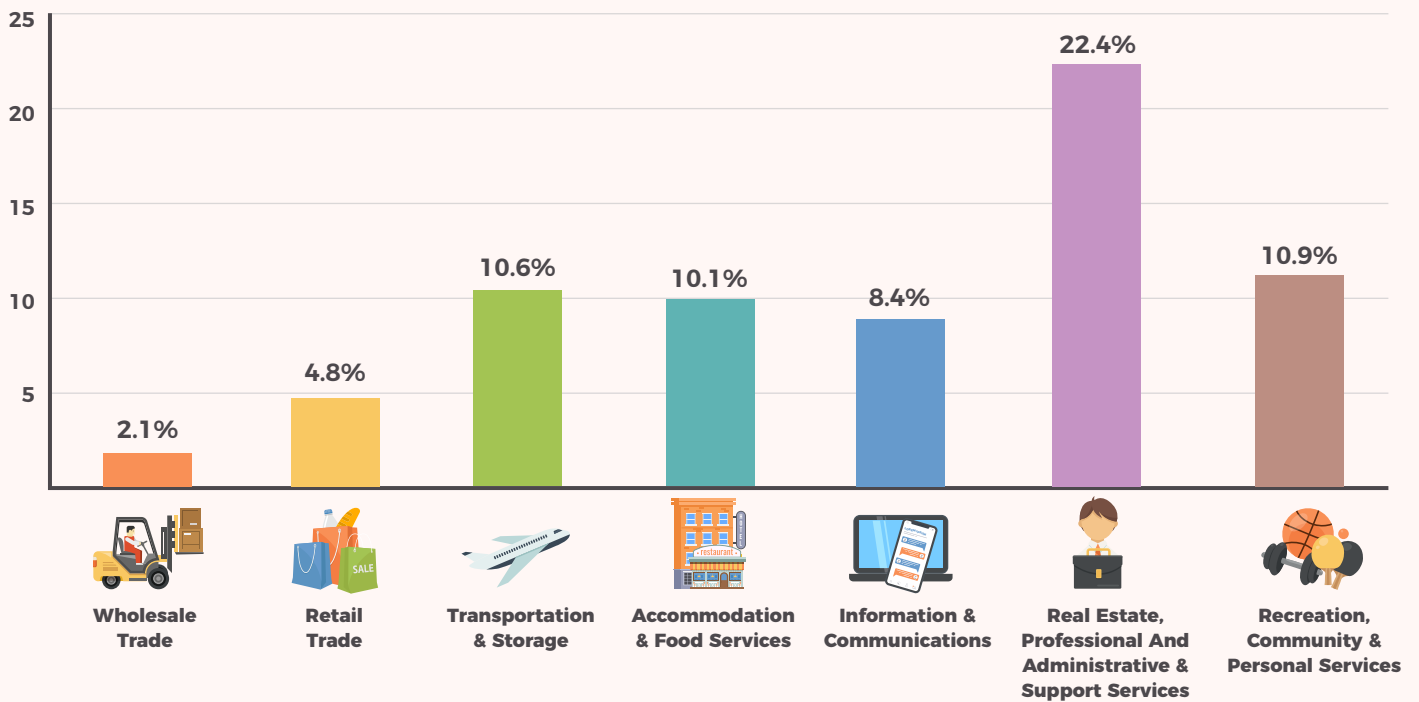


VALUE ADDED

Total: **s\$231 Bil**



PROFITABILITY RATIO ²



² Profitability ratio is defined as the ratio of operating surplus to operating revenue. It shows the proportion of operating revenue that is converted to profits.