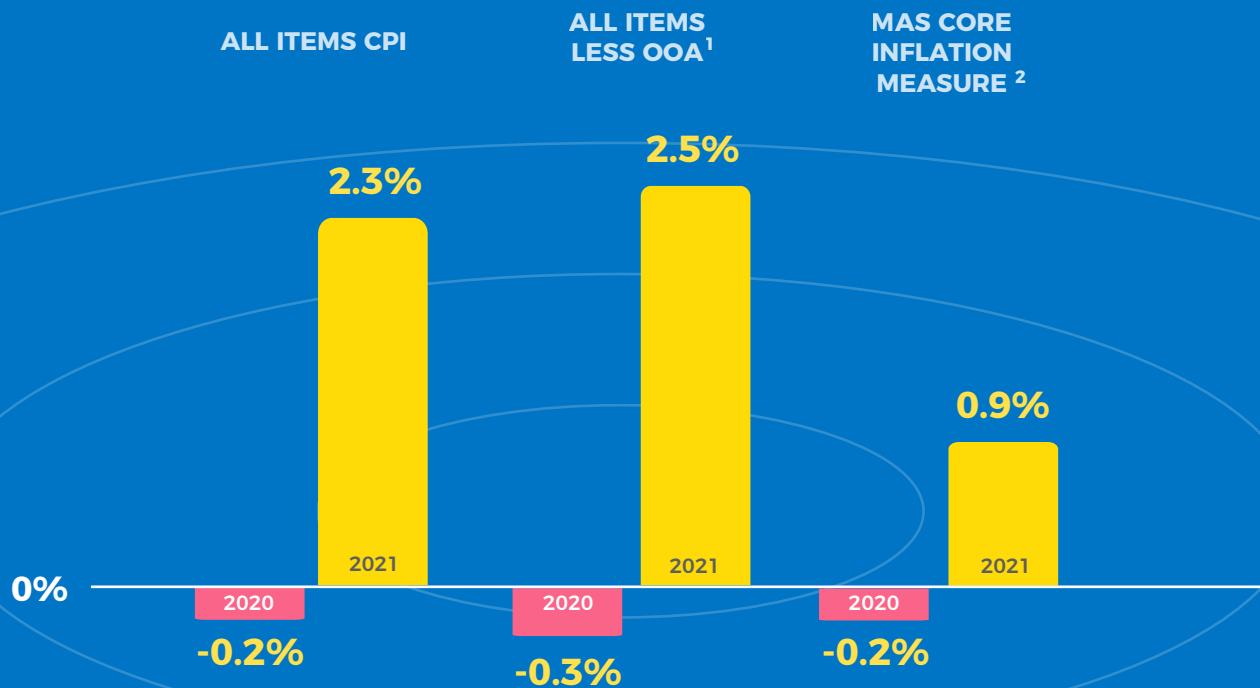


SINGAPORE  
CONSUMER  
PRICE INDEX  
(CPI)



The CPI is designed to measure the **average price changes** of a **fixed basket** of consumption goods and services commonly purchased by resident households over time. It is widely used as a measure of consumer price inflation.



**SINGAPORE'S CPI INCREASED BY 2.3% IN 2021**

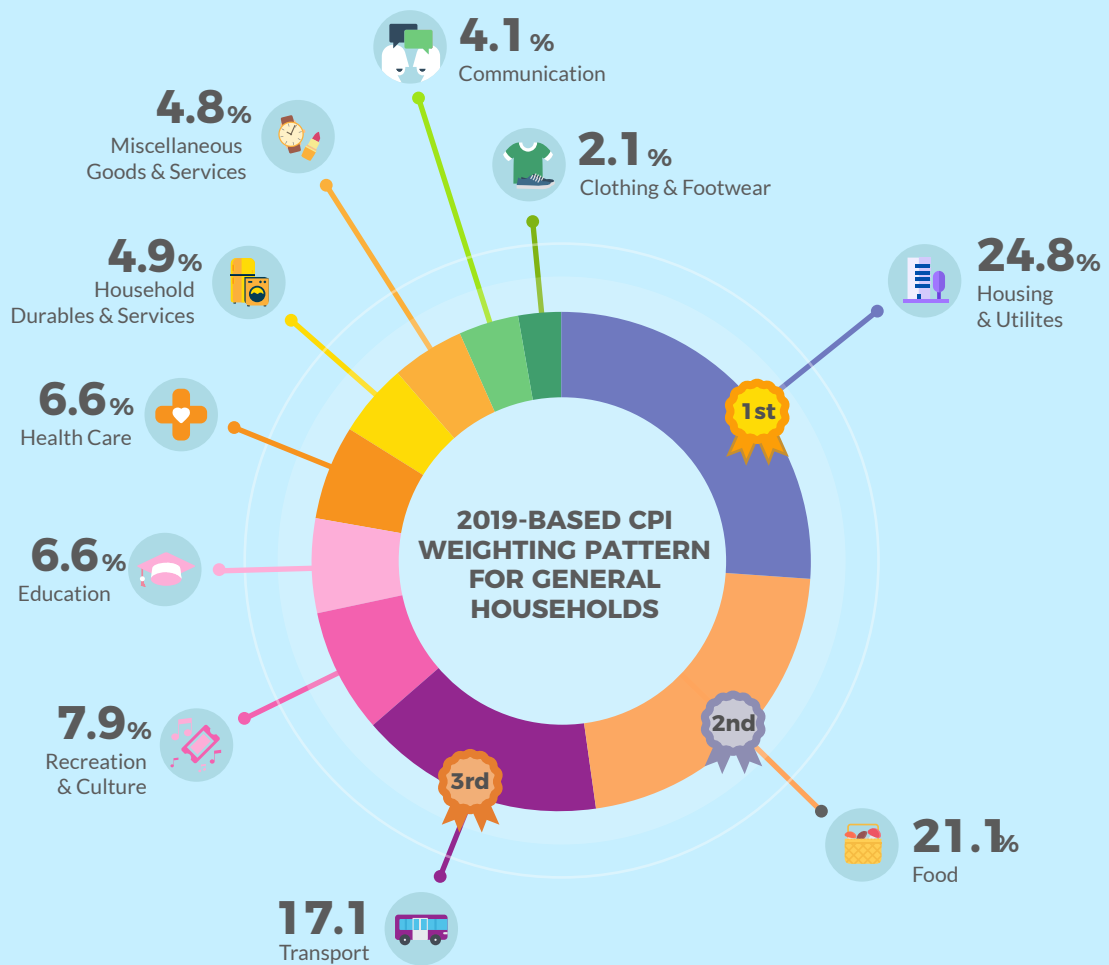
1. All Items less OOA: Accommodation, one of the groups in the Housing & Utilities expenditure division, comprises “rented and owner-occupied accommodation”, as well as “housing maintenance & repairs”. A significant share of the Accommodation group is “owner-occupied accommodation” cost, which reflects the costs to homeowners of utilizing the flow of services provided by their homes over an extended period of time. As the cost of using housing services is not directly observed for homeowners, it is computed based on the imputed rental concept under the rental equivalence method, i.e. proxied by market rentals. The Owner-Occupied Accommodation (OOA) cost in CPI comprises rentals that are imputed for owner-occupied homes. Imputed rentals on OOA have no impact on the cash expenditure of owner-occupied households. Actual rentals paid on rented units are still included in the measure.
2. MAS Core Inflation Measure: The Monetary Authority of Singapore (MAS) monitors a core inflation measure that excludes the components of “Accommodation” and “Private Transport”.



# WEIGHTING PATTERN FOR 2019-BASED CPI FOR GENERAL HOUSEHOLDS



HOUSING & UTILITIES, FOOD, AND TRANSPORT ARE THE TOP 3 EXPENDITURE GROUPS



Download the information paper for more details

[DOWNLOAD](#)

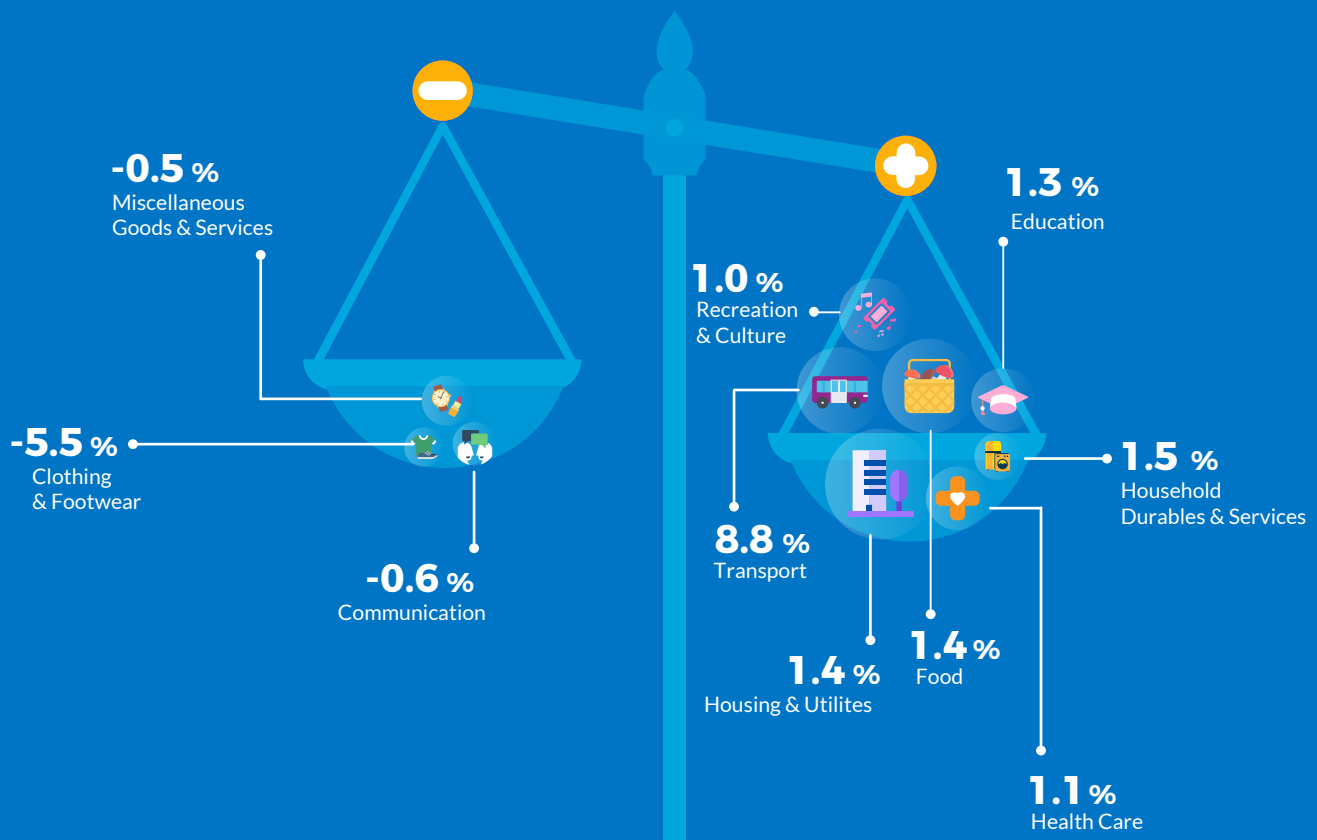


# INFLATION RATE FOR GENERAL HOUSEHOLDS BY DIVISION IN 2021



HIGHER COSTS OF TRANSPORT, HOUSING & UTILITIES AND FOOD MODERATED BY LOWER COSTS OF CLOTHING & FOOTWEAR IN 2021

## 2021 Inflation Rate by Division



View detailed  
CPI Statistics

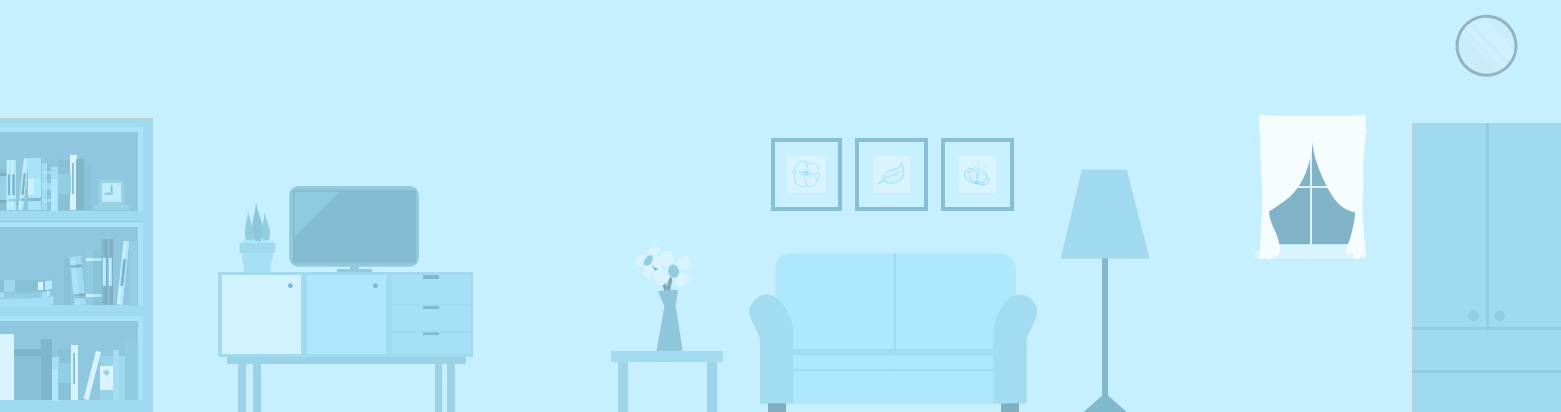
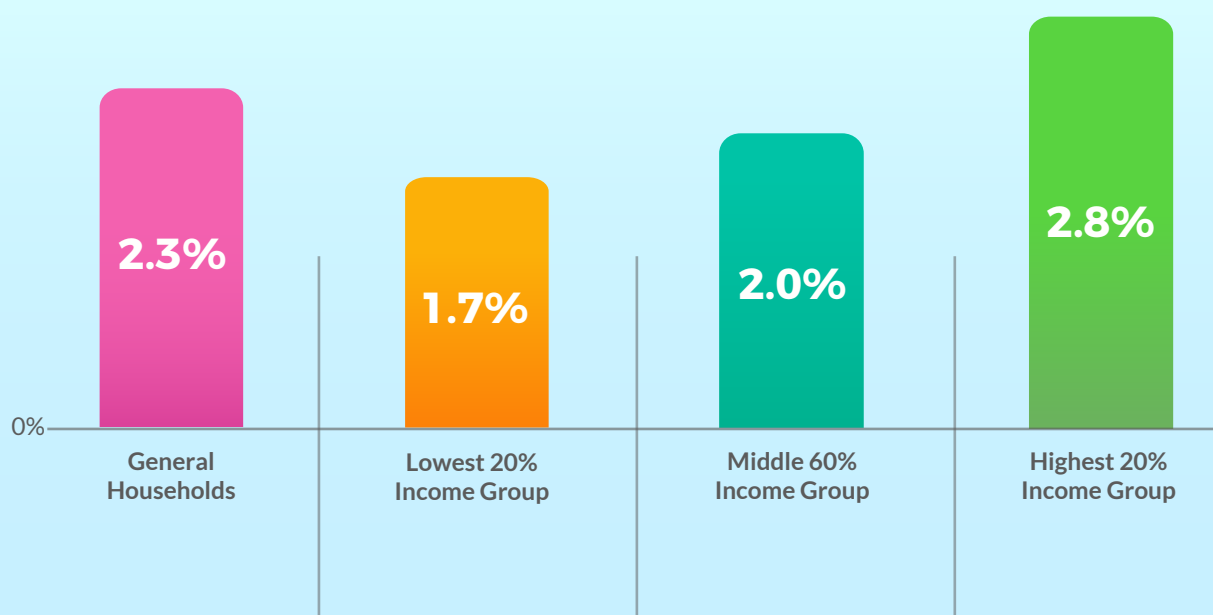
VIEW



# INFLATION RATE FOR GENERAL HOUSEHOLDS AND BY HOUSEHOLD INCOME GROUP IN 2021



THE CPI-ALL ITEMS FOR LOWEST 20%, MIDDLE 60% AND HIGHEST 20% INCOME GROUP ROSE BY 1.7%, 2.0% AND 2.8% RESPECTIVELY IN 2021.



View our latest press release on Consumer Price Index by Household Income Group

[VIEW](#)